

CD2 Monoclonal Antibody(3F3)
Catalog # AP63323**Specification**

CD2 Monoclonal Antibody(3F3) - Product Information

Application	IHC
Primary Accession	P06729
Reactivity	Human, Mouse, Rat
Host	Mouse
Clonality	Monoclonal

CD2 Monoclonal Antibody(3F3) - Additional Information**Gene ID** 914**Other Names**

CD2; SRBC; T-cell surface antigen CD2; Erythrocyte receptor; LFA-2; LFA-3 receptor; Rosette receptor; T-cell surface antigen T11/Leu-5; CD2

Dilution

IHC~~IHC: 1:200

Format

PBS, pH 7.4, containing 0.09% (W/V) sodium azide as Preservative and 50% Glycerol.

Storage Conditions

-20°C

CD2 Monoclonal Antibody(3F3) - Protein Information**Name** CD2**Synonyms** SRBC**Function**

CD2 interacts with lymphocyte function-associated antigen CD58 (LFA-3) and CD48/BCM1 to mediate adhesion between T-cells and other cell types. CD2 is implicated in the triggering of T-cells, the cytoplasmic domain is implicated in the signaling function.

Cellular Location

Cell membrane; Single-pass type I membrane protein

Tissue Location

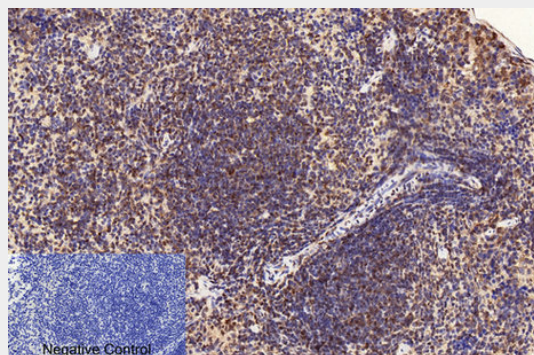
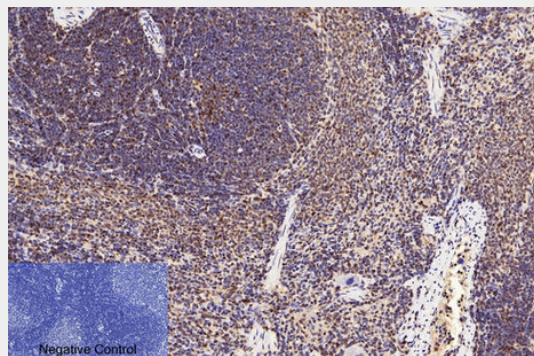
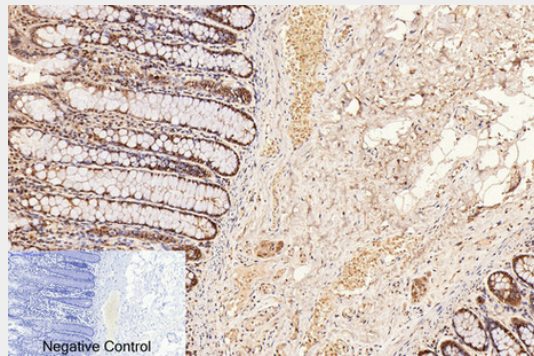
Expressed in natural killer cells (at protein level).

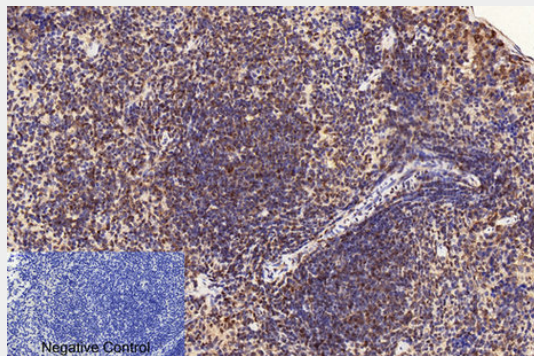
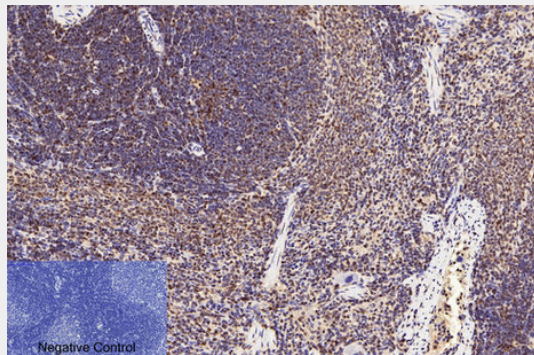
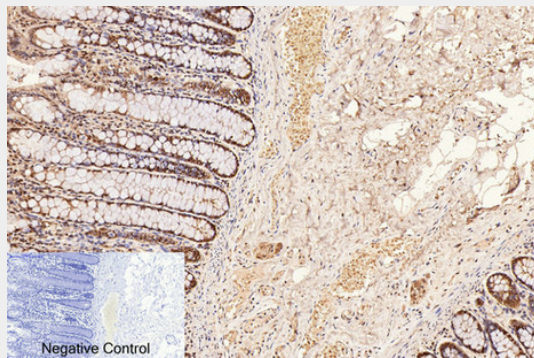
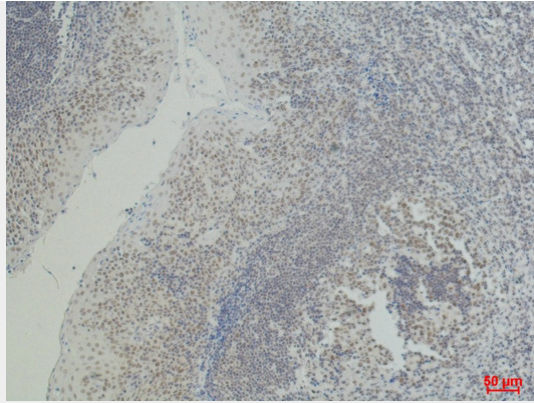
CD2 Monoclonal Antibody(3F3) - Protocols

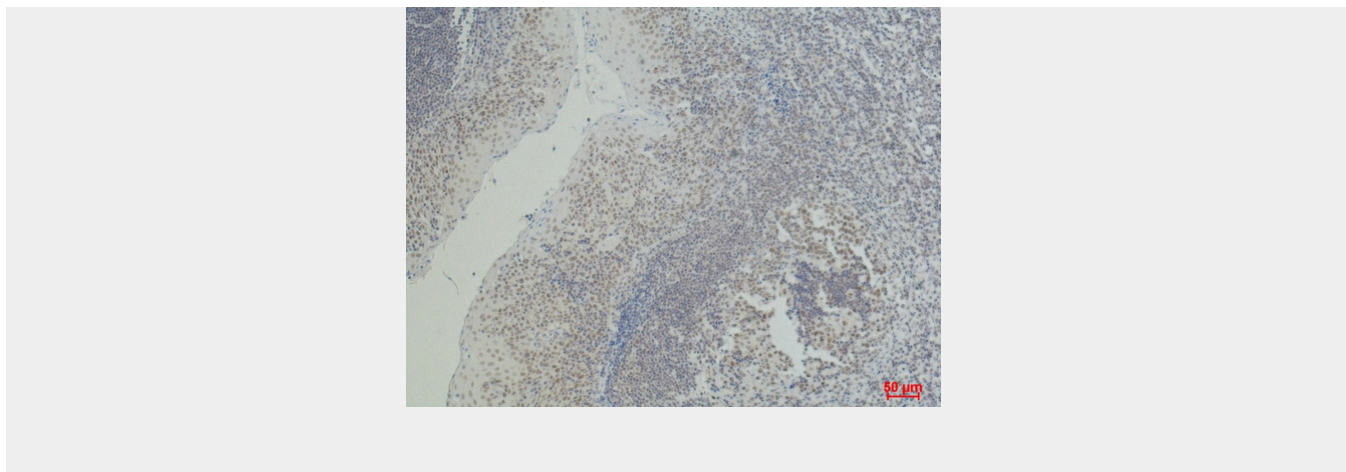
Provided below are standard protocols that you may find useful for product applications.

- [Western Blot](#)
- [Blocking Peptides](#)
- [Dot Blot](#)
- [Immunohistochemistry](#)
- [Immunofluorescence](#)
- [Immunoprecipitation](#)
- [Flow Cytometry](#)
- [Cell Culture](#)

CD2 Monoclonal Antibody(3F3) - Images







CD2 Monoclonal Antibody(3F3) - Background

CD2 interacts with lymphocyte function-associated antigen CD58 (LFA-3) and CD48/BCM1 to mediate adhesion between T- cells and other cell types. CD2 is implicated in the triggering of T-cells, the cytoplasmic domain is implicated in the signaling function.