

CD1 Monoclonal Antibody(9H6)
Catalog # AP63322

Specification

CD1 Monoclonal Antibody(9H6) - Product Information

Application	IHC
Primary Accession	P06126
Reactivity	Human, Mouse, Rat
Host	Mouse
Clonality	Monoclonal

CD1 Monoclonal Antibody(9H6) - Additional Information

Gene ID 909

Other Names

T-cell surface glycoprotein CD1a (T-cell surface antigen T6/Leu-6) (hTa1 thymocyte antigen) (CD antigen CD1a)

Dilution

IHC~~IHC 1:200 IF 1:50-200

Format

PBS, pH 7.4, containing 0.09% (W/V) sodium azide as Preservative and 50% Glycerol.

Storage Conditions

-20°C

CD1 Monoclonal Antibody(9H6) - Protein Information

Name CD1A

Function

Antigen-presenting protein that binds self and non-self lipid and glycolipid antigens and presents them to T-cell receptors on natural killer T-cells.

Cellular Location

Cell membrane; Single-pass type I membrane protein. Membrane raft; Single-pass type I membrane protein. Endosome membrane; Single- pass type I membrane protein. Note=Subject to intracellular trafficking between the cell membrane and endosomes (PubMed:11231314). Localizes to cell surface lipid rafts (PubMed:18178838).

Tissue Location

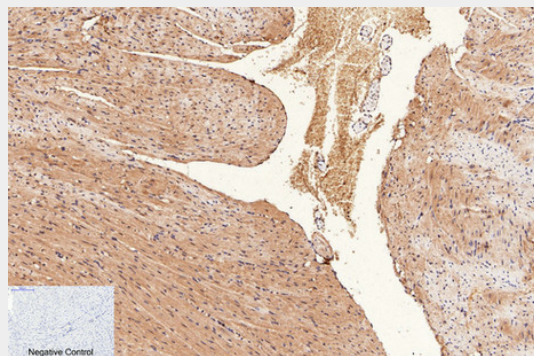
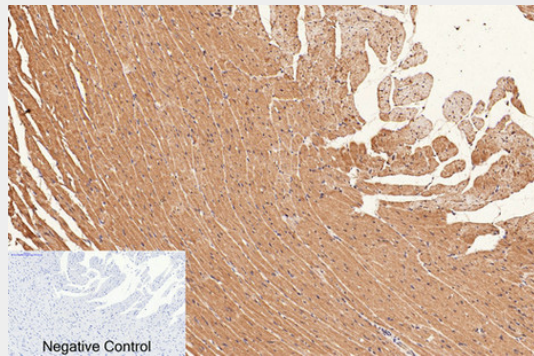
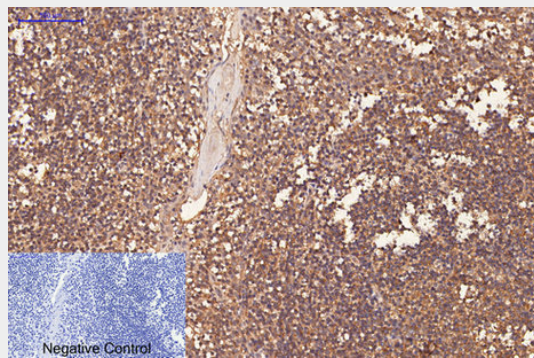
Expressed on cortical thymocytes, epidermal Langerhans cells, dendritic cells, on certain T-cell leukemias, and in various other tissues.

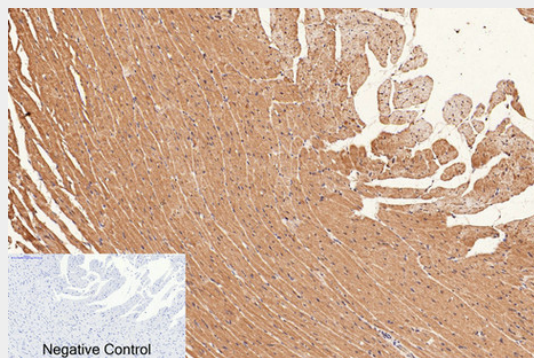
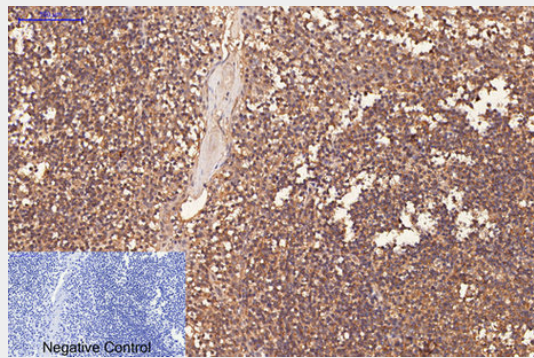
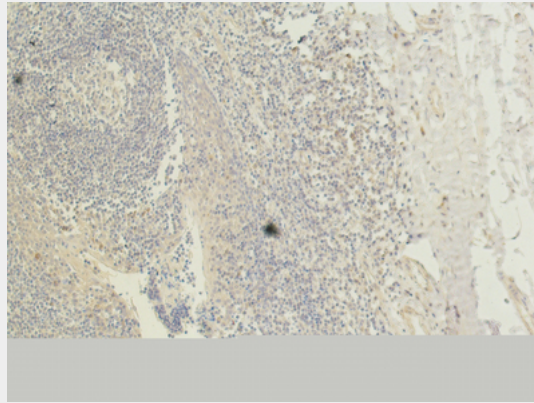
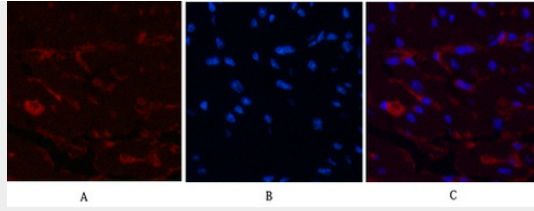
CD1 Monoclonal Antibody(9H6) - Protocols

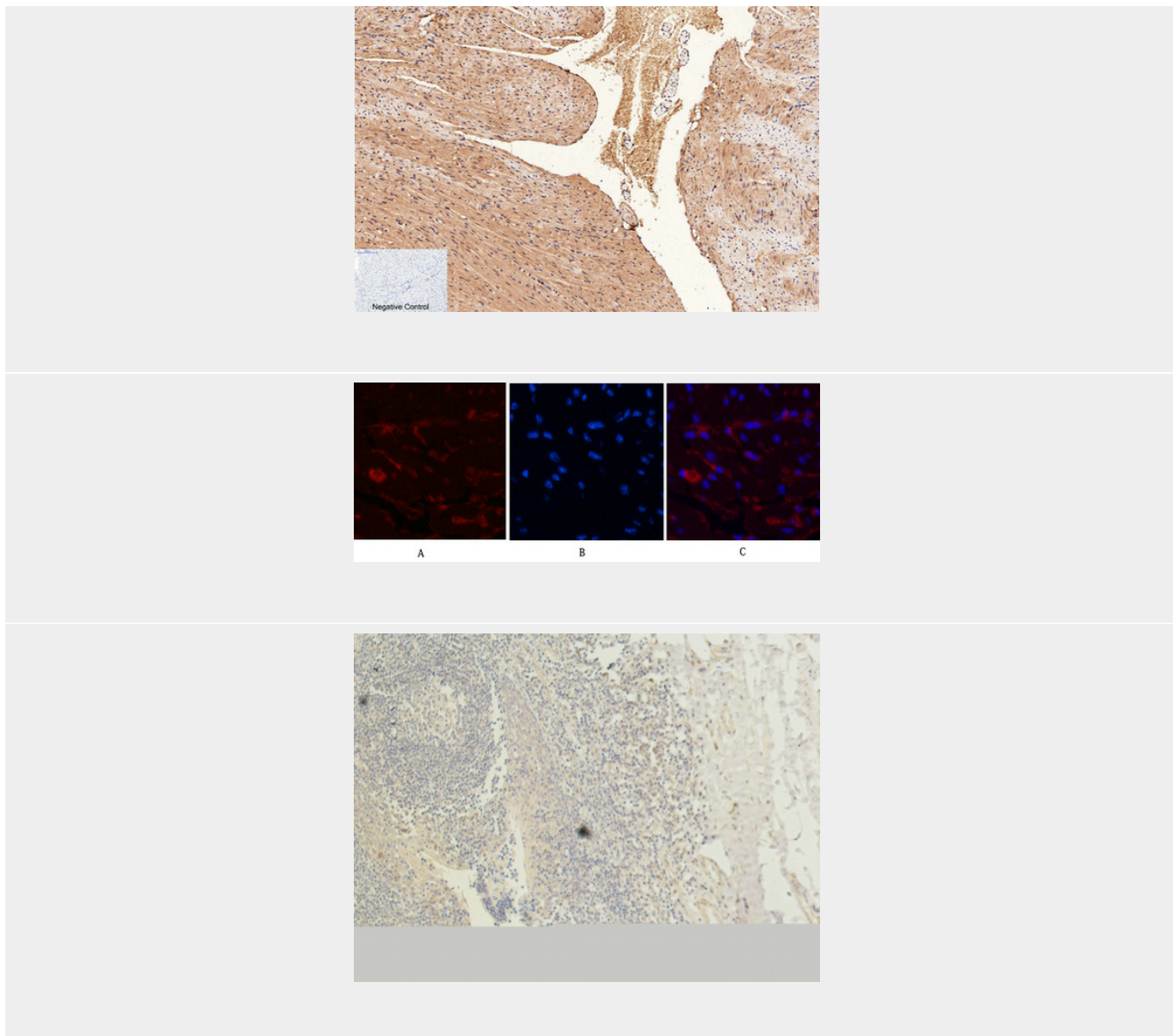
Provided below are standard protocols that you may find useful for product applications.

- [Western Blot](#)
- [Blocking Peptides](#)
- [Dot Blot](#)
- [Immunohistochemistry](#)
- [Immunofluorescence](#)
- [Immunoprecipitation](#)
- [Flow Cytometry](#)
- [Cell Culture](#)

CD1 Monoclonal Antibody(9H6) - Images







CD1 Monoclonal Antibody(9H6) - Background

Antigen-presenting protein that binds self and non-self lipid and glycolipid antigens and presents them to T-cell receptors on natural killer T-cells.