

NSE Monoclonal Antibody(13E2)
Catalog # AP63320

Specification

NSE Monoclonal Antibody(13E2) - Product Information

Application	WB
Primary Accession	P09104
Reactivity	Human, Mouse, Rat
Host	Mouse
Clonality	Monoclonal

NSE Monoclonal Antibody(13E2) - Additional Information

Gene ID 2026

Other Names

ENO2; Gamma-enolase; 2-phospho-D-glycerate hydro-lyase; Enolase 2; Neural enolase; Neuron-specific enolase; NSE

Dilution

WB~WB: 1:2000 IHC: 1:200 IF 1:200

Format

PBS, pH 7.4, containing 0.09% (W/V) sodium azide as Preservative and 50% Glycerol.

Storage Conditions

-20°C

NSE Monoclonal Antibody(13E2) - Protein Information

Name ENO2

Function

Has neurotrophic and neuroprotective properties on a broad spectrum of central nervous system (CNS) neurons. Binds, in a calcium- dependent manner, to cultured neocortical neurons and promotes cell survival (By similarity).

Cellular Location

Cytoplasm. Cell membrane. Note=Can translocate to the plasma membrane in either the homodimeric (alpha/alpha) or heterodimeric (alpha/gamma) form

Tissue Location

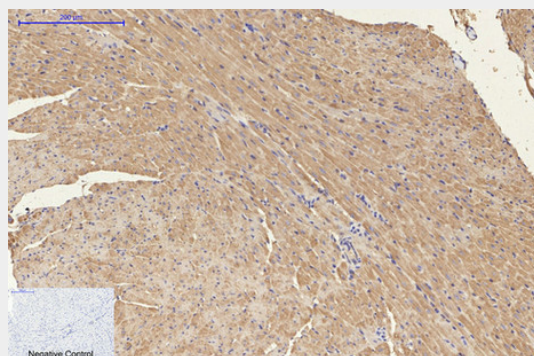
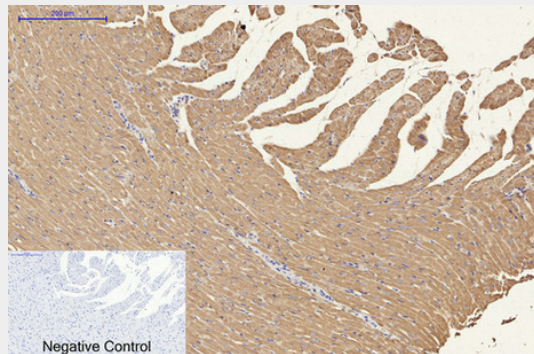
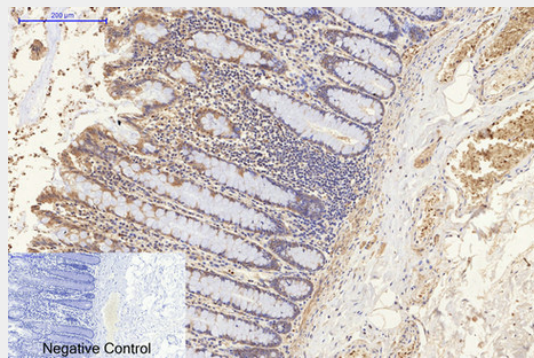
The alpha/alpha homodimer is expressed in embryo and in most adult tissues. The alpha/beta heterodimer and the beta/beta homodimer are found in striated muscle, and the alpha/gamma heterodimer and the gamma/gamma homodimer in neurons

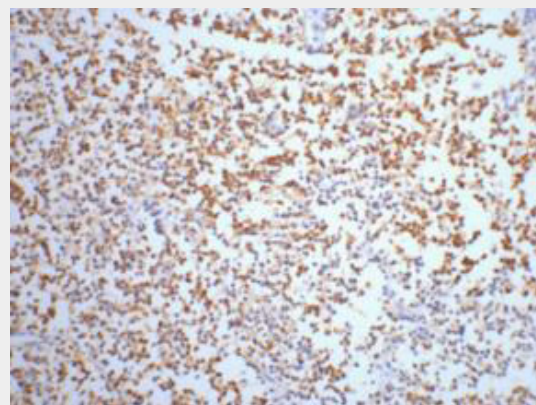
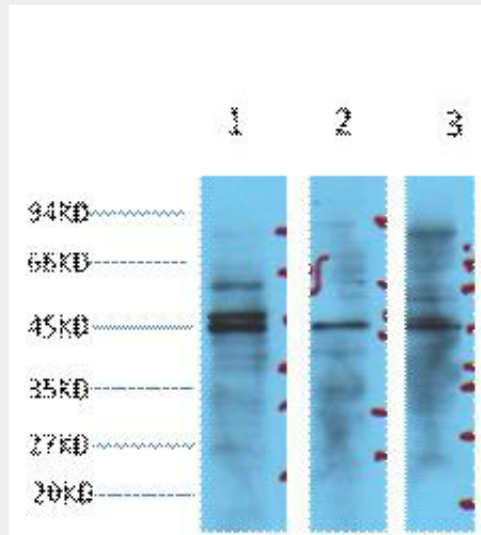
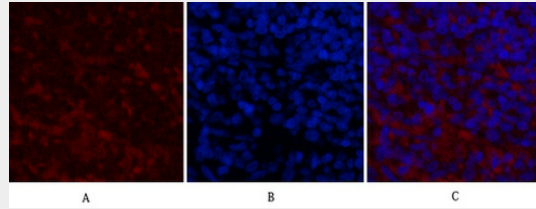
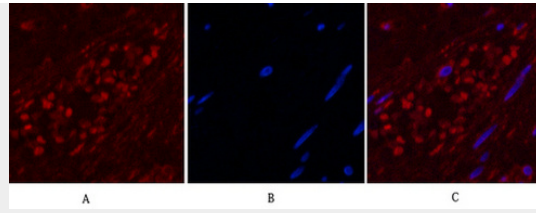
NSE Monoclonal Antibody(13E2) - Protocols

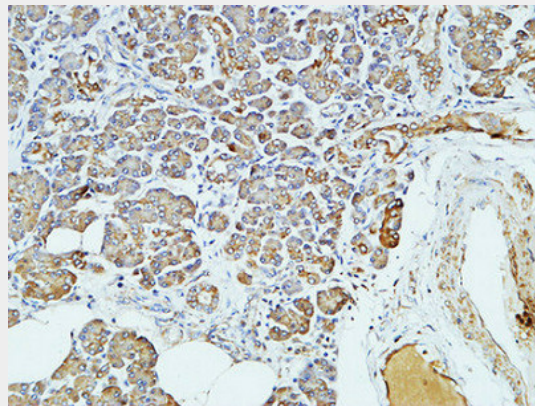
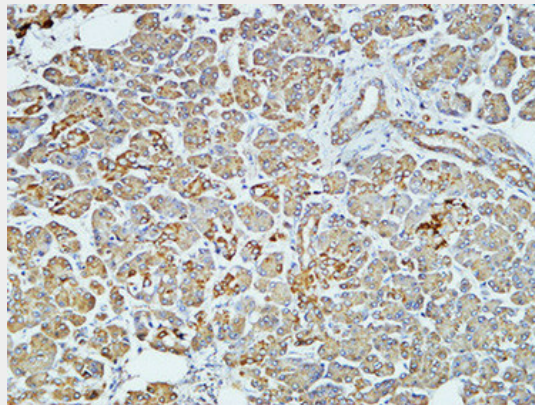
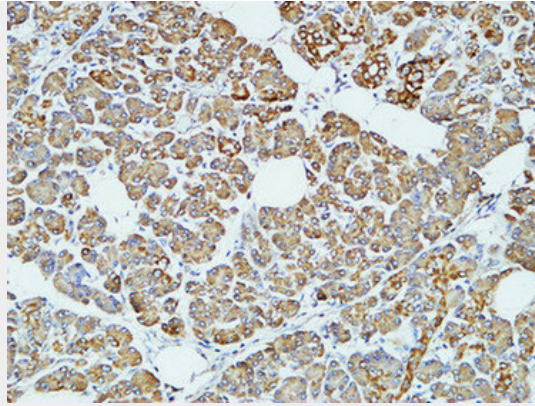
Provided below are standard protocols that you may find useful for product applications.

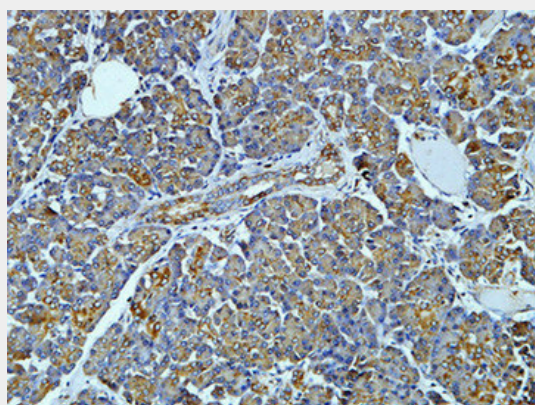
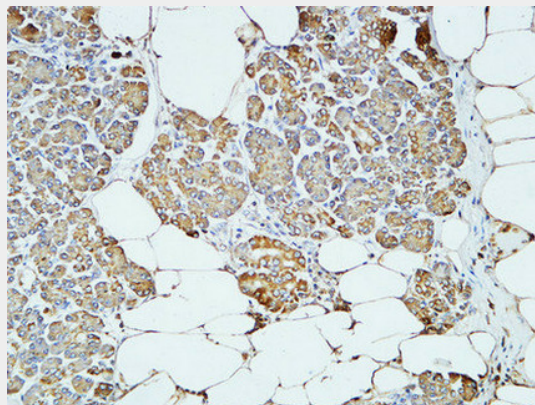
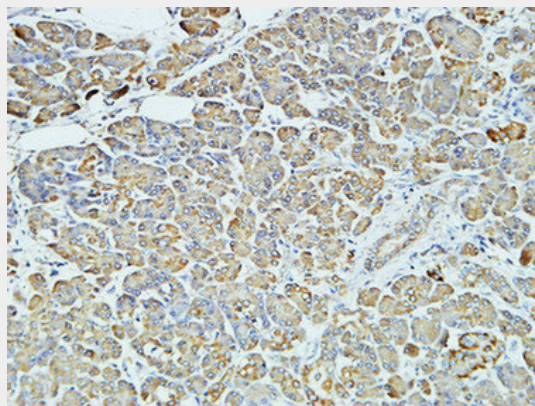
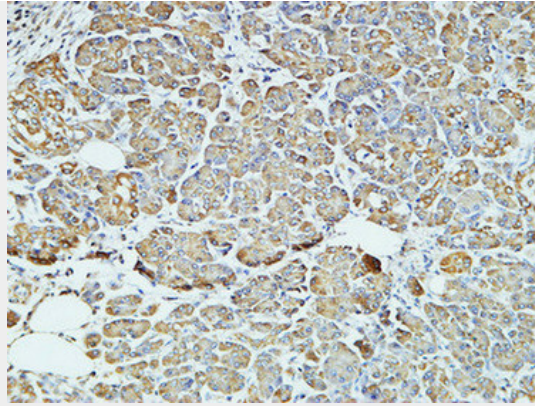
- [Western Blot](#)
- [Blocking Peptides](#)
- [Dot Blot](#)
- [Immunohistochemistry](#)
- [Immunofluorescence](#)
- [Immunoprecipitation](#)
- [Flow Cytometry](#)
- [Cell Culture](#)

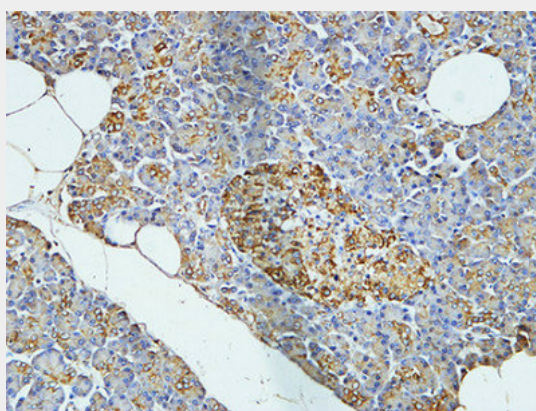
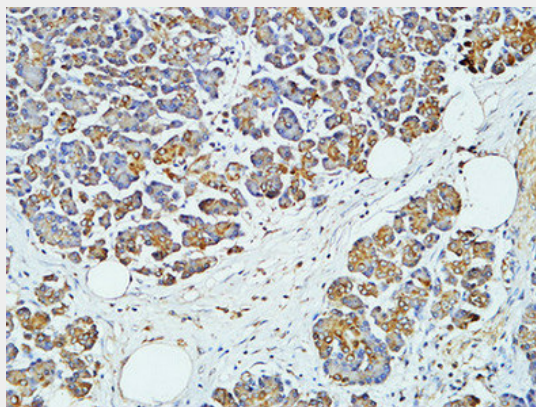
NSE Monoclonal Antibody(13E2) - Images











NSE Monoclonal Antibody(13E2) - Background

Has neurotrophic and neuroprotective properties on a broad spectrum of central nervous system (CNS) neurons. Binds, in a calcium-dependent manner, to cultured neocortical neurons and promotes cell survival (By similarity).