

**CD21 Monoclonal Antibody(2C5)**  
Catalog # AP63314**Specification**

---

**CD21 Monoclonal Antibody(2C5) - Product Information**

Application	IHC
Primary Accession	<a href="#">P20023</a>
Reactivity	Human, Mouse, Rat
Host	Mouse
Clonality	Monoclonal

**CD21 Monoclonal Antibody(2C5) - Additional Information****Gene ID** 1380**Other Names**

CR2; C3DR; Complement receptor type 2; Cr2; Complement C3d receptor; Epstein-Barr virus receptor; EBV receptor; CD21

**Dilution**

IHC~~IHC 1:200 IF 1:50-200

**Format**

PBS, pH 7.4, containing 0.09% (W/V) sodium azide as Preservative and 50% Glycerol.

**Storage Conditions**

-20°C

**CD21 Monoclonal Antibody(2C5) - Protein Information****Name** CR2**Synonyms** C3DR**Function**

Receptor for complement C3, for the Epstein-Barr virus on human B-cells and T-cells and for HNRNPU (PubMed:&lt;a href="http://www.uniprot.org/citations/7753047" target="\_blank"&gt;7753047&lt;/a&gt;). Participates in B lymphocytes activation (PubMed:&lt;a href="http://www.uniprot.org/citations/7753047" target="\_blank"&gt;7753047&lt;/a&gt;).

**Cellular Location**

Cell membrane; Single-pass type I membrane protein

**Tissue Location**

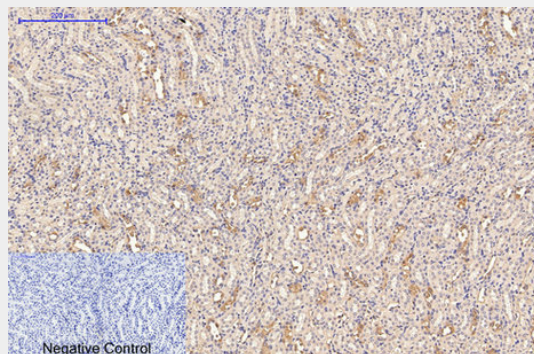
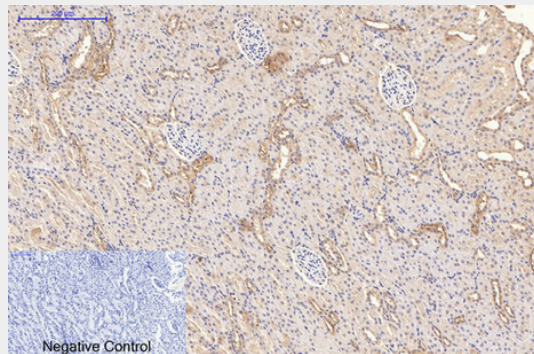
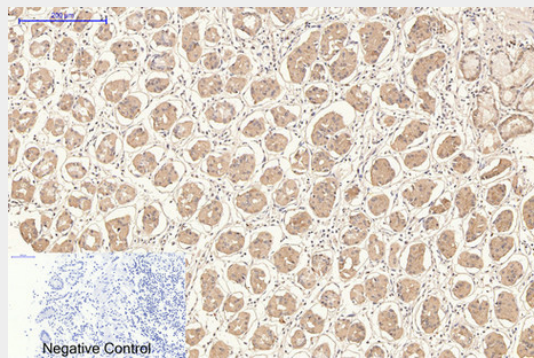
Mature B-lymphocytes, T-lymphocytes, pharyngeal epithelial cells, astrocytes and follicular dendritic cells of the spleen

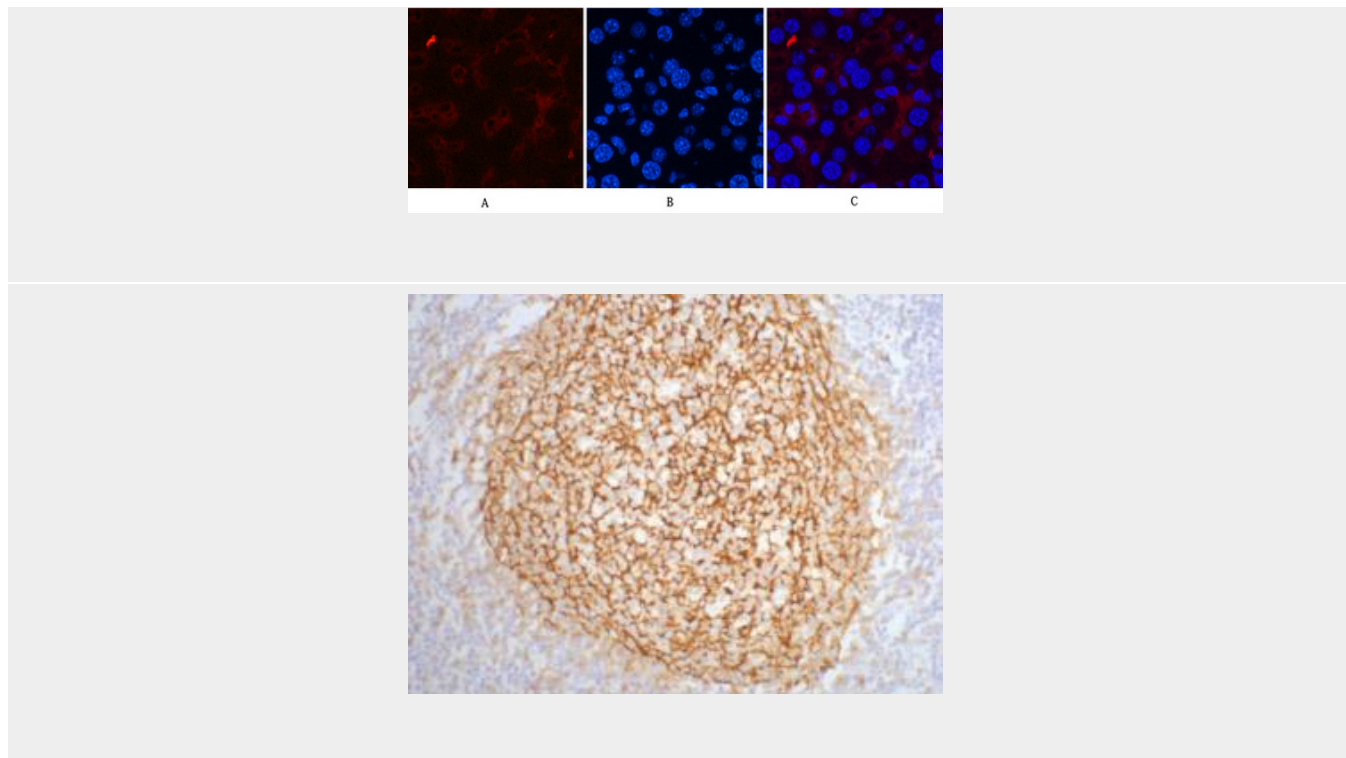
## CD21 Monoclonal Antibody(2C5) - Protocols

Provided below are standard protocols that you may find useful for product applications.

- [Western Blot](#)
- [Blocking Peptides](#)
- [Dot Blot](#)
- [Immunohistochemistry](#)
- [Immunofluorescence](#)
- [Immunoprecipitation](#)
- [Flow Cytometry](#)
- [Cell Culture](#)

## CD21 Monoclonal Antibody(2C5) - Images





### **CD21 Monoclonal Antibody(2C5) - Background**

Receptor for complement C3, for the Epstein-Barr virus on human B-cells and T-cells and for HNRNPU (PubMed:7753047). Participates in B lymphocytes activation (PubMed:7753047).