

CK16 Monoclonal Antibody(6F6)
Catalog # AP63310**Specification**

CK16 Monoclonal Antibody(6F6) - Product Information

Application	IHC
Primary Accession	P08779
Reactivity	Human, Mouse, Rat
Host	Mouse
Clonality	Monoclonal

CK16 Monoclonal Antibody(6F6) - Additional Information**Gene ID** 3868**Other Names**

KRT16; KRT16A; Keratin, type I cytoskeletal 16; Cytokeratin-16; CK-16; Keratin-16; K16

Dilution

IHC~~IHC 1:200 IF 1:50-200

Format

PBS, pH 7.4, containing 0.09% (W/V) sodium azide as Preservative and 50% Glycerol.

Storage Conditions

-20°C

CK16 Monoclonal Antibody(6F6) - Protein Information**Name** KRT16**Synonyms** KRT16A**Function**

Epidermis-specific type I keratin that plays a key role in skin. Acts as a regulator of innate immunity in response to skin barrier breach: required for some inflammatory checkpoint for the skin barrier maintenance.

Tissue Location

Expressed in the corneal epithelium (at protein level).

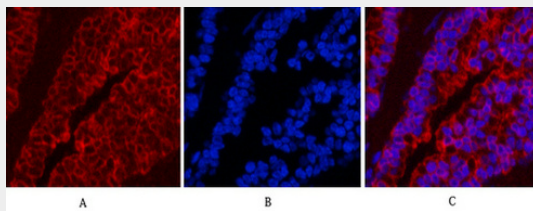
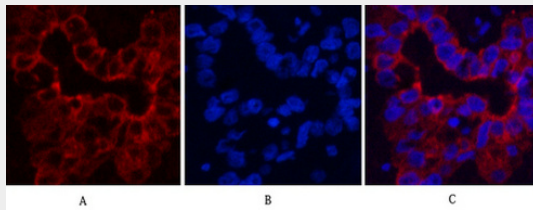
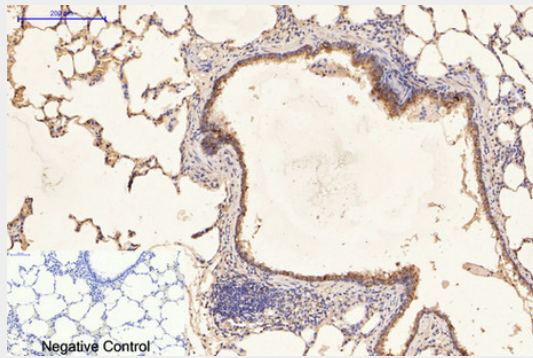
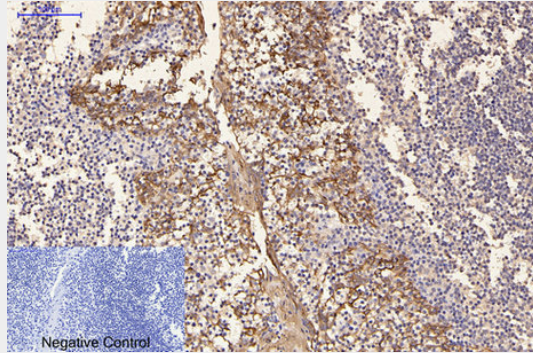
CK16 Monoclonal Antibody(6F6) - Protocols

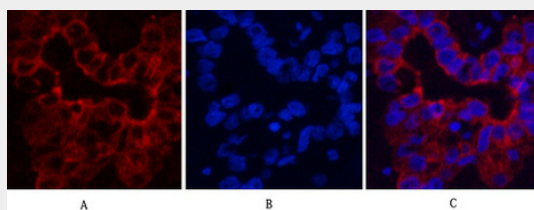
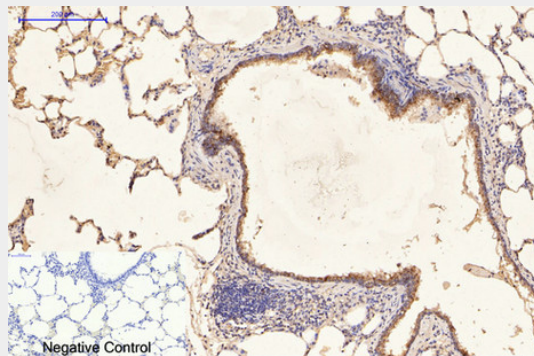
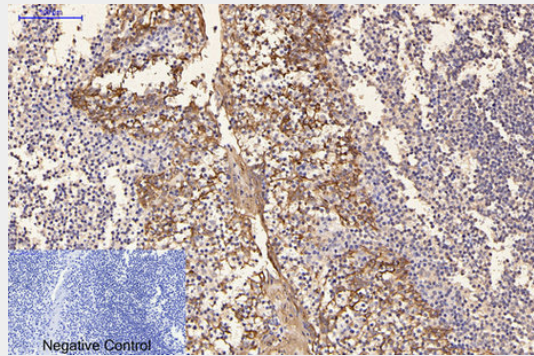
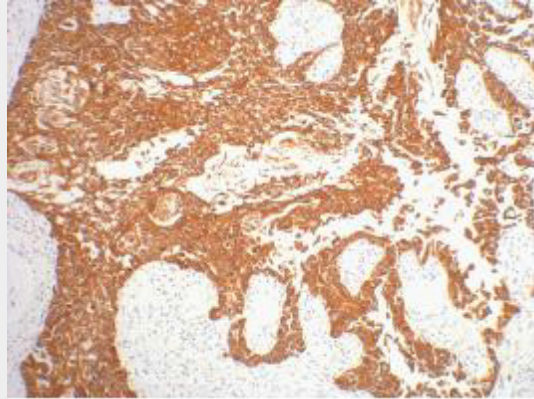
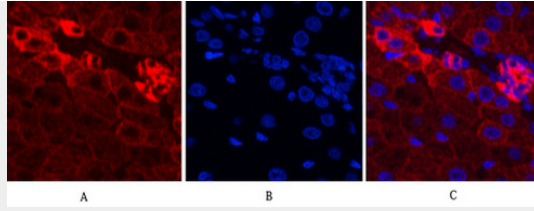
Provided below are standard protocols that you may find useful for product applications.

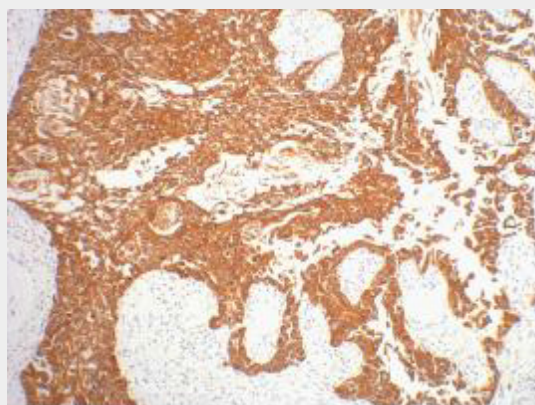
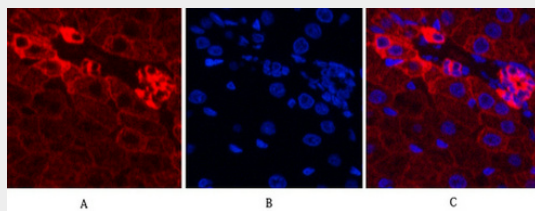
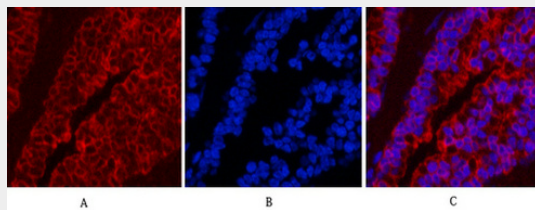
- [Western Blot](#)

- [Blocking Peptides](#)
- [Dot Blot](#)
- [Immunohistochemistry](#)
- [Immunofluorescence](#)
- [Immunoprecipitation](#)
- [Flow Cytometry](#)
- [Cell Culture](#)

CK16 Monoclonal Antibody(6F6) - Images







CK16 Monoclonal Antibody(6F6) - Background

Epidermis-specific type I keratin that plays a key role in skin. Acts as a regulator of innate immunity in response to skin barrier breach: required for some inflammatory checkpoint for the skin barrier maintenance.