

**CK8 Monoclonal Antibody(8G8)**  
Catalog # AP63309**Specification**

---

**CK8 Monoclonal Antibody(8G8) - Product Information**

Application	IF
Primary Accession	<a href="#">P05787</a>
Reactivity	Human, Mouse, Rat
Host	Mouse
Clonality	Monoclonal

**CK8 Monoclonal Antibody(8G8) - Additional Information****Gene ID** 3856**Other Names**

KRT8; CYK8; Keratin, type II cytoskeletal 8; Cytokeratin-8; CK-8; Keratin-8; K8; Type-II keratin Kb8

**Dilution**

IF~~IF: 1:50-200 WB: 1:2000-5000 IHC: 1:200

**Format**

PBS, pH 7.4, containing 0.09% (W/V) sodium azide as Preservative and 50% Glycerol.

**Storage Conditions**

-20°C

**CK8 Monoclonal Antibody(8G8) - Protein Information****Name** KRT8**Synonyms** CYK8**Function**

Together with KRT19, helps to link the contractile apparatus to dystrophin at the costameres of striated muscle.

**Cellular Location**

Cytoplasm. Nucleus, nucleoplasm {ECO:0000250|UniProtKB:Q10758}. Nucleus matrix {ECO:0000250|UniProtKB:Q10758}

**Tissue Location**

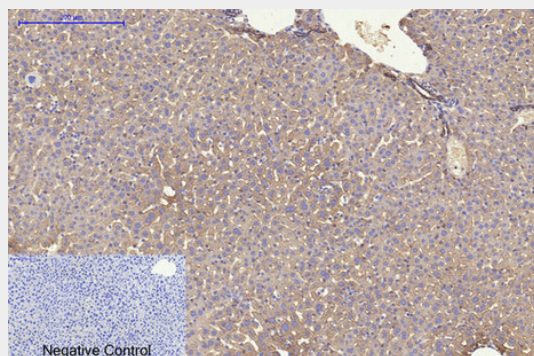
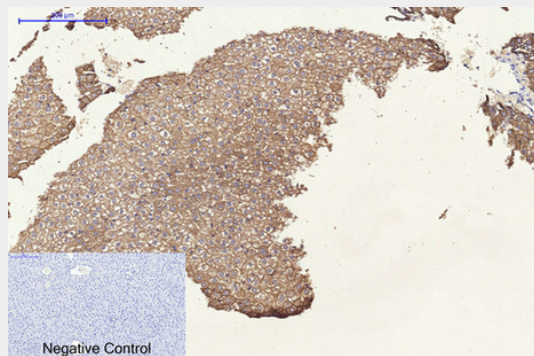
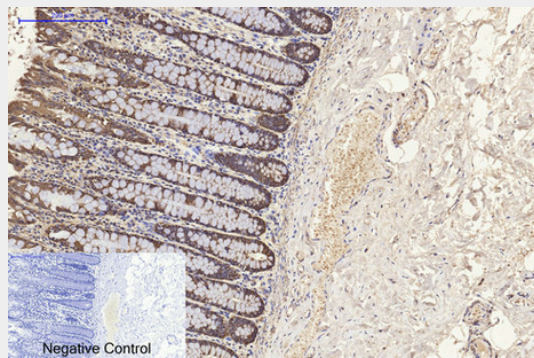
Observed in muscle fibers accumulating in the costameres of myoplasm at the sarcolemma membrane in structures that contain dystrophin and spectrin. Expressed in gingival mucosa and hard palate of the oral cavity.

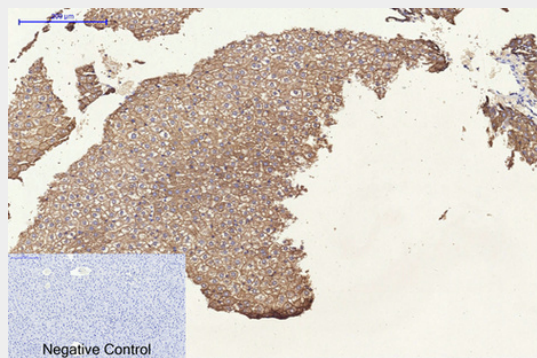
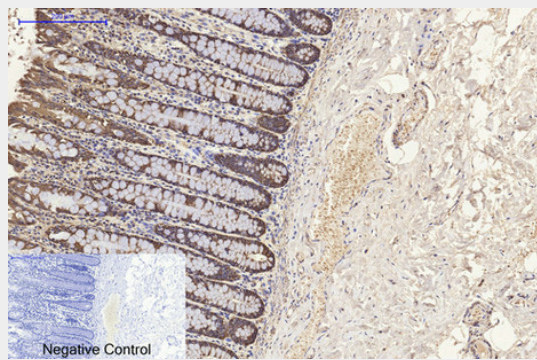
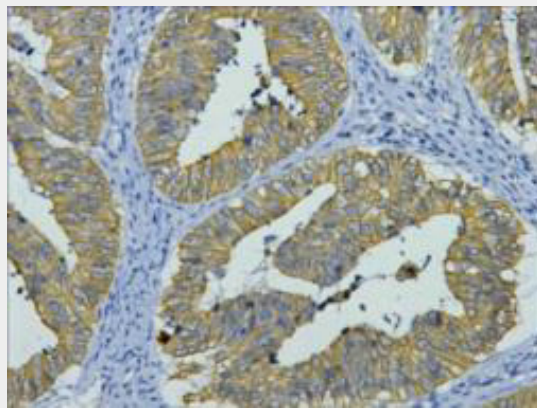
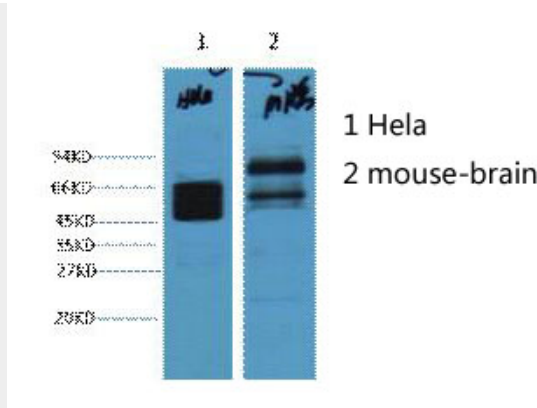
## CK8 Monoclonal Antibody(8G8) - Protocols

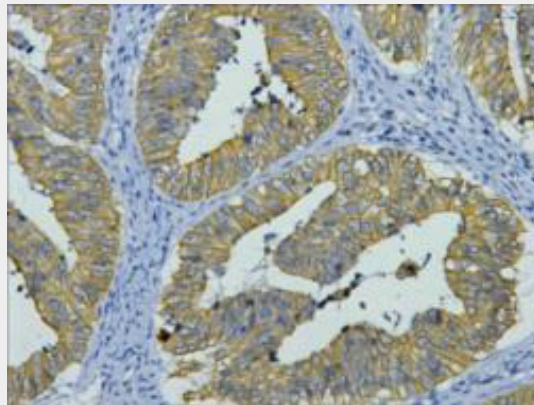
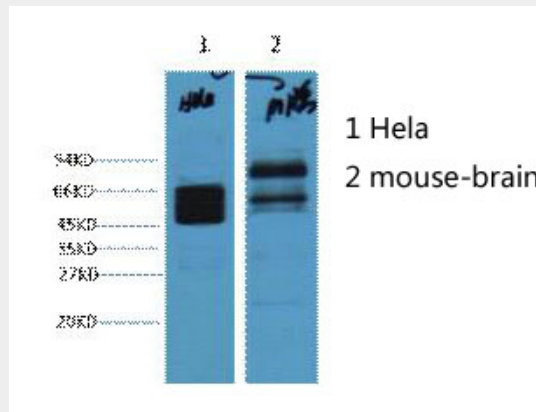
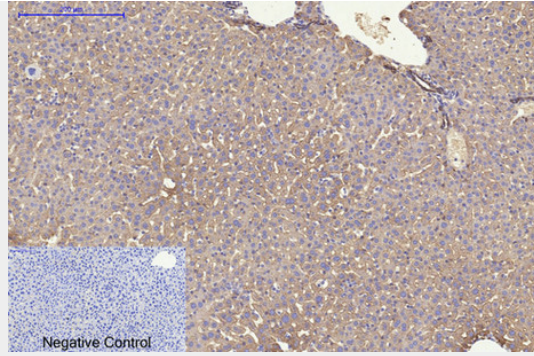
Provided below are standard protocols that you may find useful for product applications.

- [Western Blot](#)
- [Blocking Peptides](#)
- [Dot Blot](#)
- [Immunohistochemistry](#)
- [Immunofluorescence](#)
- [Immunoprecipitation](#)
- [Flow Cytometry](#)
- [Cell Culture](#)

## CK8 Monoclonal Antibody(8G8) - Images







### **CK8 Monoclonal Antibody(8G8) - Background**

Together with KRT19, helps to link the contractile apparatus to dystrophin at the costameres of striated muscle.