

**CD23 Monoclonal Antibody(1E9)**  
Catalog # AP63303**Specification****CD23 Monoclonal Antibody(1E9) - Product Information**

Application	IF
Primary Accession	<a href="#">P06734</a>
Reactivity	Human, Mouse, Rat
Host	Mouse
Clonality	Monoclonal

**CD23 Monoclonal Antibody(1E9) - Additional Information****Gene ID** 2208**Other Names**

FCER2; CD23A; CLEC4J; FCE2; IGEBF; Low affinity immunoglobulin epsilon Fc receptor; BLAST-2; C-type lectin domain family 4 member J; Fc-epsilon-RII; Immunoglobulin E-binding factor; Lymphocyte IgE receptor; CD23

**Dilution**

IF~~IF: 1:50-200 IHC: 1:200

**Format**

PBS, pH 7.4, containing 0.09% (W/V) sodium azide as Preservative and 50% Glycerol.

**Storage Conditions**

-20°C

**CD23 Monoclonal Antibody(1E9) - Protein Information****Name** FCER2**Synonyms** CD23A, CLEC4J, FCE2, IGEBF**Function**

Low-affinity receptor for immunoglobulin E (IgE) and CR2/CD21. Has essential roles in the regulation of IgE production and in the differentiation of B cells. On B cells, initiates IgE-dependent antigen uptake and presentation to T cells (PubMed: [2167225](http://www.uniprot.org/citations/2167225)). On macrophages, upon IgE binding and antigen cross-linking induces intracellular killing of parasites through activation of L-Arginine- nitric oxide pathway (PubMed: [7544003](http://www.uniprot.org/citations/7544003)).

**Cellular Location**

Cell membrane; Single-pass type II membrane protein. Cell membrane; Lipid-anchor. Secreted. Note=Also exists as a soluble excreted form, sCD23

### Tissue Location

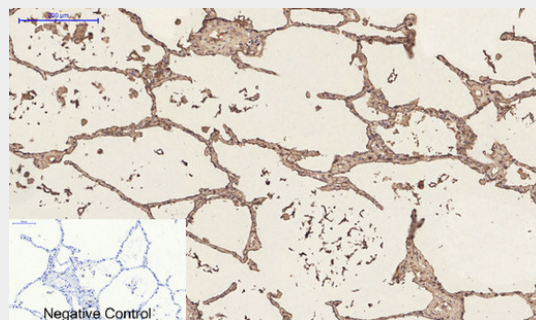
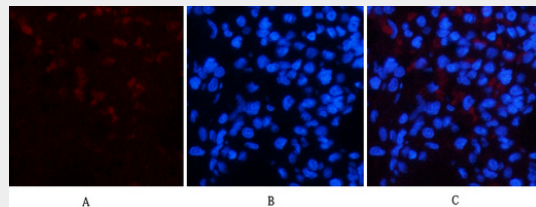
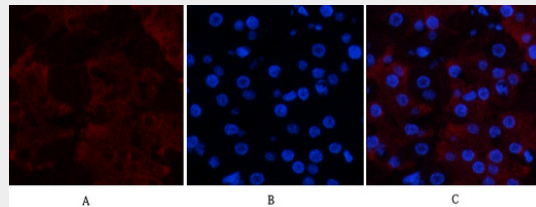
Detected in urine (at protein level).

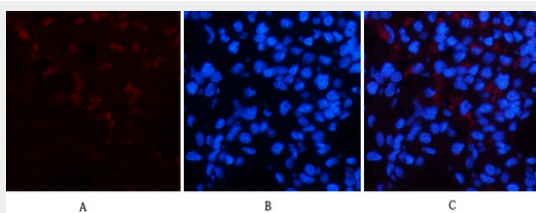
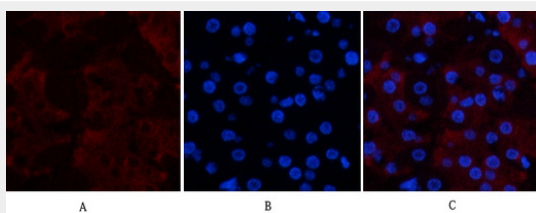
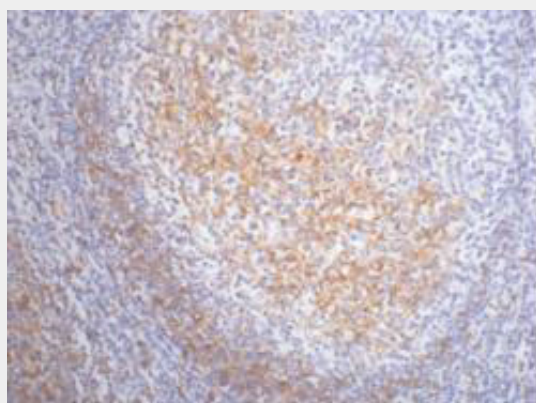
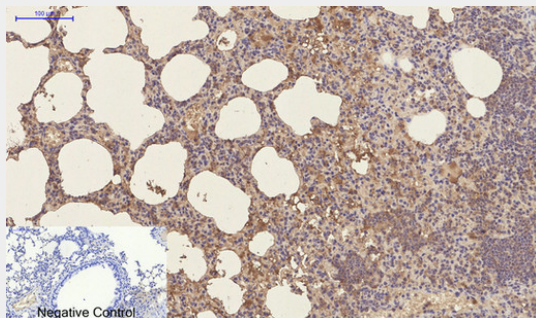
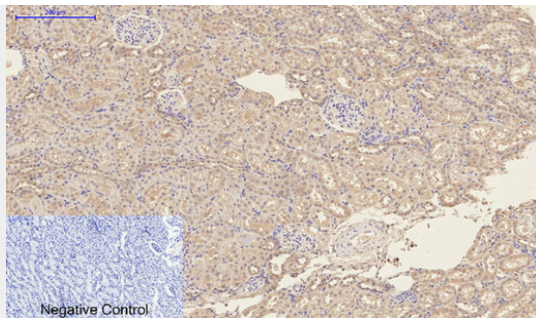
### CD23 Monoclonal Antibody(1E9) - Protocols

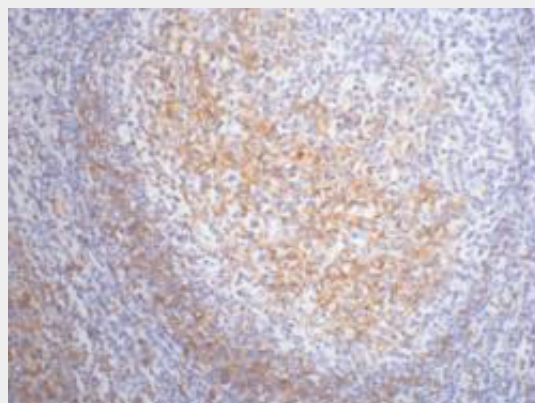
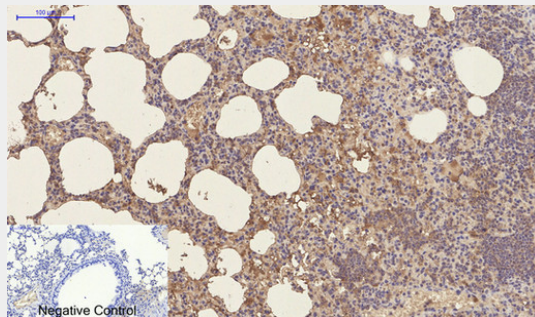
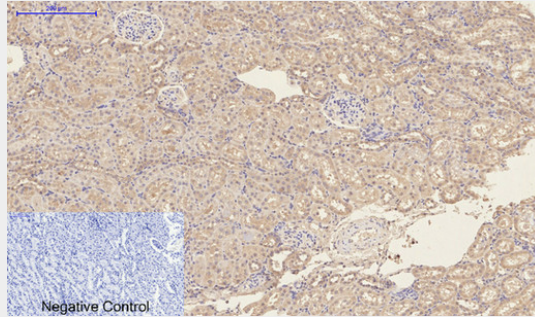
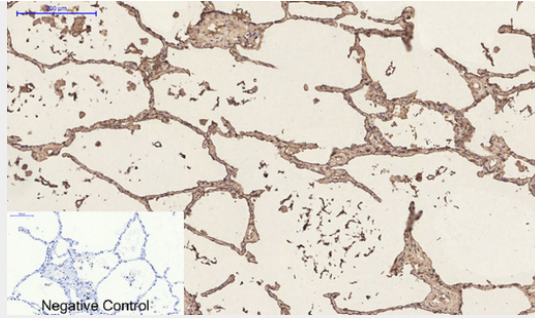
Provided below are standard protocols that you may find useful for product applications.

- [Western Blot](#)
- [Blocking Peptides](#)
- [Dot Blot](#)
- [Immunohistochemistry](#)
- [Immunofluorescence](#)
- [Immunoprecipitation](#)
- [Flow Cytometry](#)
- [Cell Culture](#)

### CD23 Monoclonal Antibody(1E9) - Images







### **CD23 Monoclonal Antibody(1E9) - Background**

Low-affinity receptor for immunoglobulin E (IgE) and CR2/CD21. Has essential roles in the regulation of IgE production and in the differentiation of B-cells (it is a B-cell-specific antigen).