

CD20 Monoclonal Antibody(2F4)
Catalog # AP63302**Specification****CD20 Monoclonal Antibody(2F4) - Product Information**

Application	IHC
Primary Accession	P11836
Reactivity	Human, Mouse, Rat
Host	Mouse
Clonality	Monoclonal

CD20 Monoclonal Antibody(2F4) - Additional Information

Gene ID 931

Other Names

MS4A1; CD20; B-lymphocyte antigen CD20; B-lymphocyte surface antigen B1; Bp35; Leukocyte surface antigen Leu-16; Membrane-spanning 4-domains subfamily A member 1; CD20

Dilution

IHC~~IHC: 1:200

Format

PBS, pH 7.4, containing 0.09% (W/V) sodium azide as Preservative and 50% Glycerol.

Storage Conditions

-20°C

CD20 Monoclonal Antibody(2F4) - Protein Information

Name MS4A1

Synonyms CD20

Function

B-lymphocyte-specific membrane protein that plays a role in the regulation of cellular calcium influx necessary for the development, differentiation, and activation of B-lymphocytes (PubMed: [12920111](http://www.uniprot.org/citations/12920111), PubMed: [3925015](http://www.uniprot.org/citations/3925015), PubMed: [7684739](http://www.uniprot.org/citations/7684739)). Functions as a store-operated calcium (SOC) channel component promoting calcium influx after activation by the B-cell receptor/BCR (PubMed: [12920111](http://www.uniprot.org/citations/12920111), PubMed: [18474602](http://www.uniprot.org/citations/18474602), PubMed: [7684739](http://www.uniprot.org/citations/7684739)).

Cellular Location

Cell membrane; Multi-pass membrane protein. Cell membrane; Lipid-anchor. Note=Constitutively

associated with membrane rafts.

Tissue Location

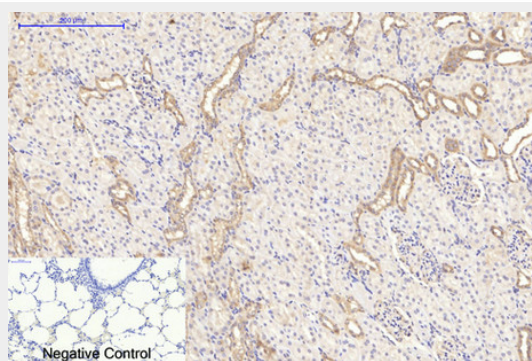
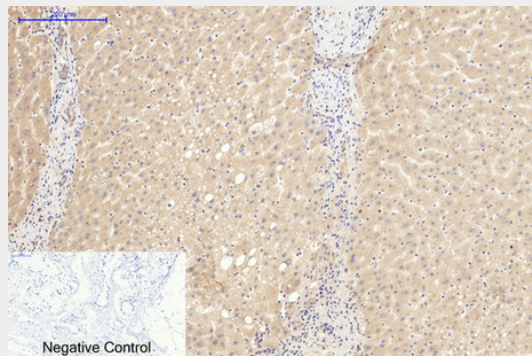
Expressed on B-cells.

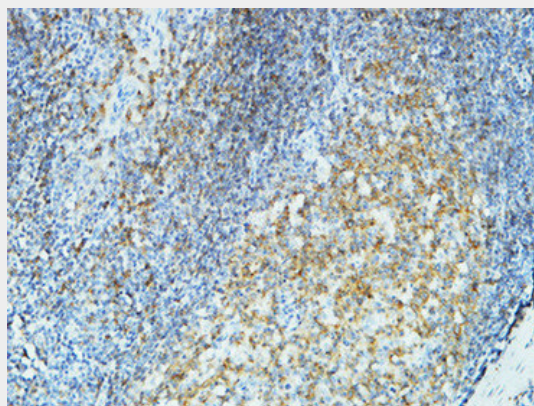
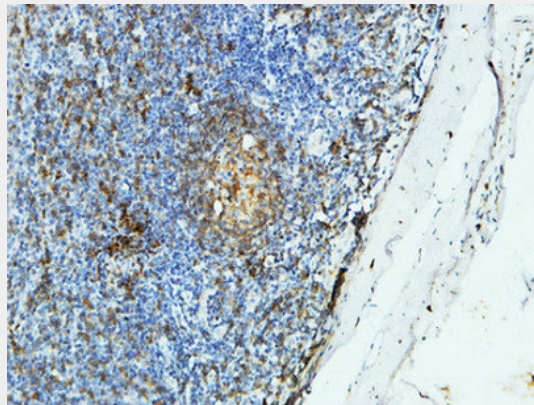
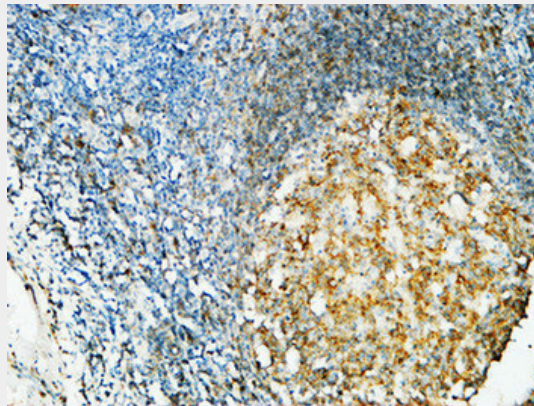
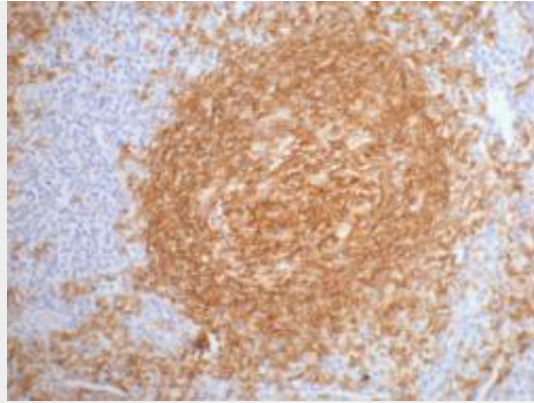
CD20 Monoclonal Antibody(2F4) - Protocols

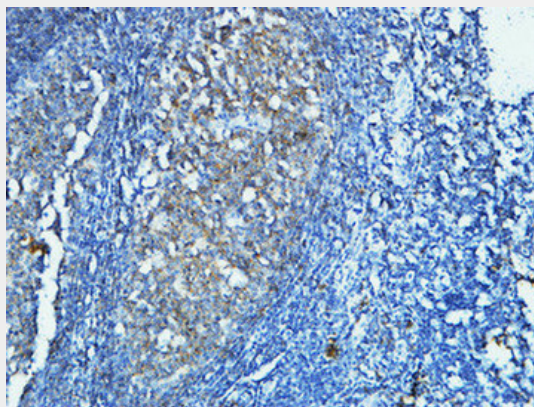
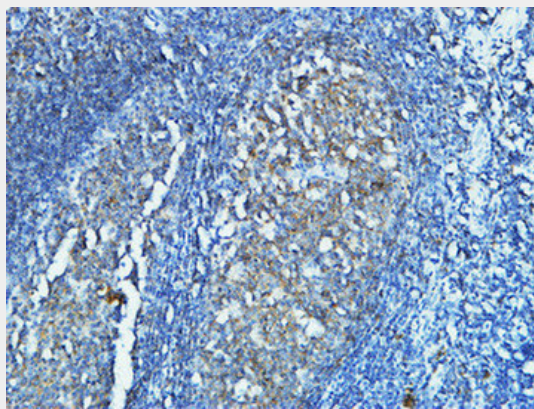
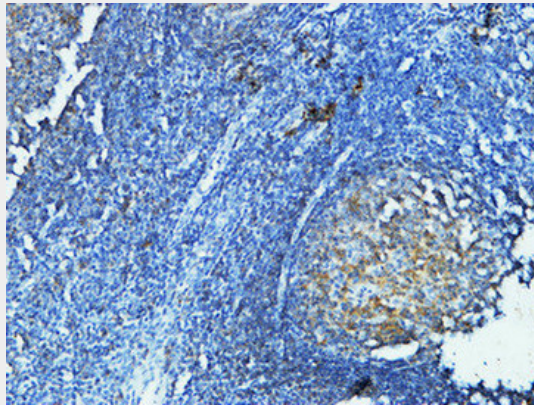
Provided below are standard protocols that you may find useful for product applications.

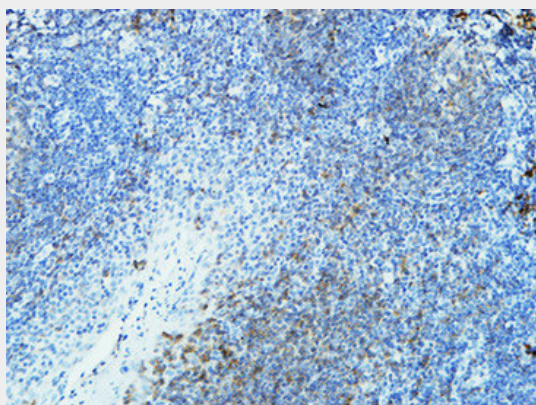
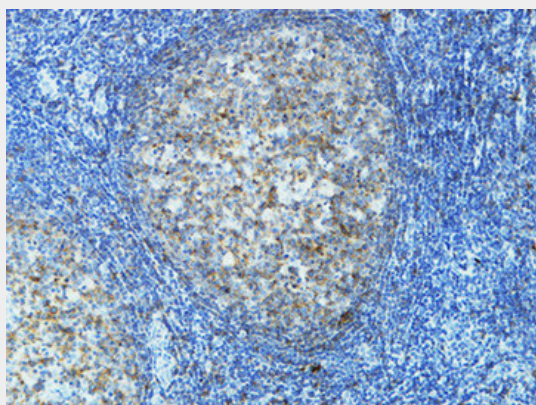
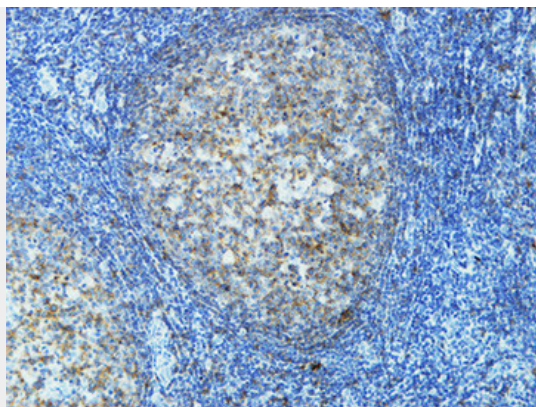
- [Western Blot](#)
- [Blocking Peptides](#)
- [Dot Blot](#)
- [Immunohistochemistry](#)
- [Immunofluorescence](#)
- [Immunoprecipitation](#)
- [Flow Cytometry](#)
- [Cell Culture](#)

CD20 Monoclonal Antibody(2F4) - Images









CD20 Monoclonal Antibody(2F4) - Background

This protein may be involved in the regulation of B-cell activation and proliferation.