

**14-3-3-pan (Acetyl Lys51/49) Polyclonal Antibody**  
Catalog # AP63263**Specification****14-3-3-pan (Acetyl Lys51/49) Polyclonal Antibody - Product Information**

Application	WB
Primary Accession	<a href="#">P31946</a>
Reactivity	Human, Mouse, Rat
Host	Rabbit
Clonality	Polyclonal

**14-3-3-pan (Acetyl Lys51/49) Polyclonal Antibody - Additional Information**

Gene ID 7529

**Other Names**

YWHAB; 14-3-3 protein beta/alpha; Protein 1054; Protein kinase C inhibitor protein 1; KCIP-1; YWHAG; 14-3-3 protein gamma; Protein kinase C inhibitor protein 1; KCIP-1; YWHAQ; 14-3-3 protein theta; 14-3-3 protein T-cell; 14-3-3 protein tau; Protein HS1; YWHAZ; 14-3-3 protein zeta/delta; Protein kinase C inhibitor protein 1; KCIP-1; SFN; HME1; 14-3-3 protein sigma; Epithelial cell marker protein 1; Stratifin

**Dilution**

WB~~Western Blot: 1/500 - 1/2000. ELISA: 1/10000. Not yet tested in other applications.

**Format**

Liquid in PBS containing 50% glycerol, 0.5% BSA and 0.09% (W/V) sodium azide.

**Storage Conditions**

-20°C

**14-3-3-pan (Acetyl Lys51/49) Polyclonal Antibody - Protein Information**

Name YWHAB

**Function**

Adapter protein implicated in the regulation of a large spectrum of both general and specialized signaling pathways. Binds to a large number of partners, usually by recognition of a phosphoserine or phosphothreonine motif. Binding generally results in the modulation of the activity of the binding partner. Negative regulator of osteogenesis. Blocks the nuclear translocation of the phosphorylated form (by AKT1) of SRPK2 and antagonizes its stimulatory effect on cyclin D1 expression resulting in blockage of neuronal apoptosis elicited by SRPK2. Negative regulator of signaling cascades that mediate activation of MAP kinases via AKAP13.

**Cellular Location**

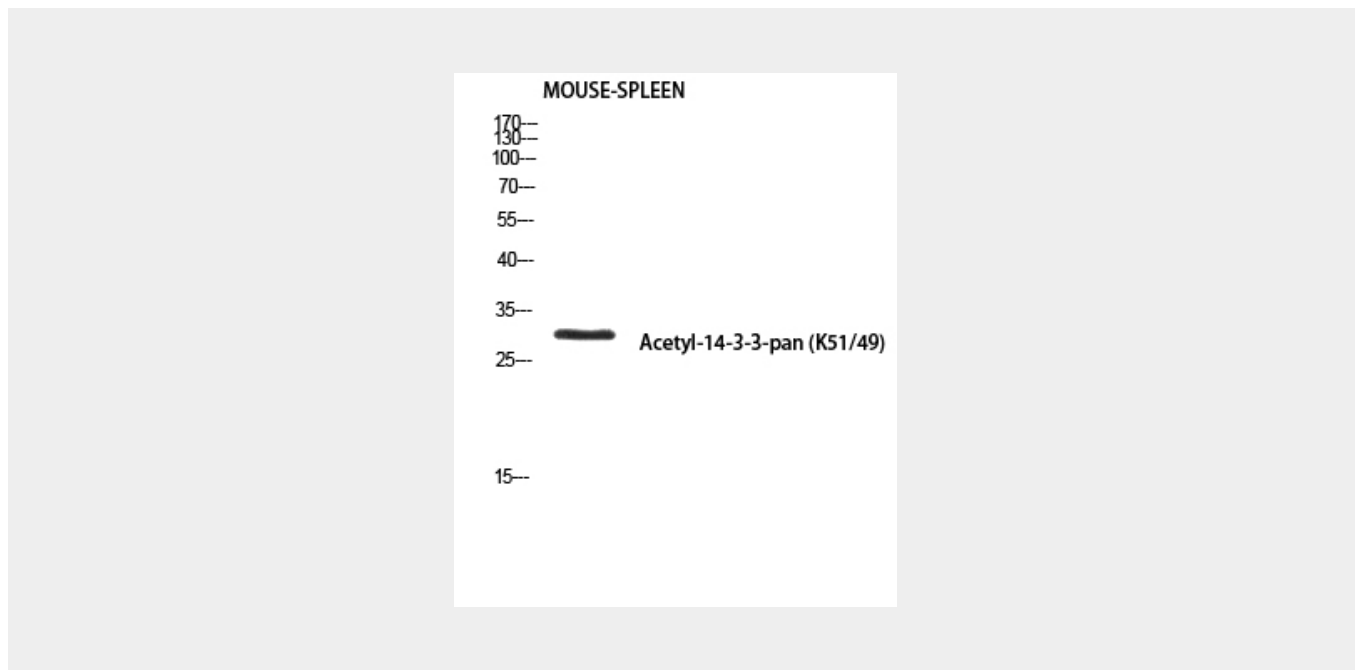
Cytoplasm. Melanosome. Note=Identified by mass spectrometry in melanosome fractions from stage I to stage IV

### 14-3-3-pan (Acetyl Lys51/49) Polyclonal Antibody - Protocols

Provided below are standard protocols that you may find useful for product applications.

- [Western Blot](#)
- [Blocking Peptides](#)
- [Dot Blot](#)
- [Immunohistochemistry](#)
- [Immunofluorescence](#)
- [Immunoprecipitation](#)
- [Flow Cytometry](#)
- [Cell Culture](#)

### 14-3-3-pan (Acetyl Lys51/49) Polyclonal Antibody - Images



### 14-3-3-pan (Acetyl Lys51/49) Polyclonal Antibody - Background

Adapter protein implicated in the regulation of a large spectrum of both general and specialized signaling pathways. Binds to a large number of partners, usually by recognition of a phosphoserine or phosphothreonine motif. Binding generally results in the modulation of the activity of the binding partner. Negative regulator of osteogenesis. Blocks the nuclear translocation of the phosphorylated form (by AKT1) of SRPK2 and antagonizes its stimulatory effect on cyclin D1 expression resulting in blockage of neuronal apoptosis elicited by SRPK2. Negative regulator of signaling cascades that mediate activation of MAP kinases via AKAP13.