

NF-E4 (Acetyl Lys43) Polyclonal Antibody
Catalog # AP63246**Specification**

NF-E4 (Acetyl Lys43) Polyclonal Antibody - Product Information

Application	WB
Primary Accession	Q86UQ8
Reactivity	Human
Host	Rabbit
Clonality	Polyclonal

NF-E4 (Acetyl Lys43) Polyclonal Antibody - Additional Information**Other Names**

NFE4; Transcription factor NF-E4

Dilution

WB~~Western Blot: 1/500 - 1/2000. ELISA: 1/20000. Not yet tested in other applications.

Format

Liquid in PBS containing 50% glycerol, 0.5% BSA and 0.09% (W/V) sodium azide.

Storage Conditions

-20°C

NF-E4 (Acetyl Lys43) Polyclonal Antibody - Protein Information**Name** NFE4**Function**

Functions as part of the SSP (stage selector protein) complex, a complex that contributes to the preferential expression of the gamma-gene in fetal erythroid cells by facilitating the interaction of the gamma-globin genes with enhancer elements contained in the locus control region (LCR). The complex binds to the stage selector element (SSE) in the proximal gamma-globin promoter. In contrast, isoform 2 acts as a repressor of gamma-globin gene expression by preventing NFE2 and RNA polymerase II recruitment to the promoter.

Cellular Location

Nucleus.

Tissue Location

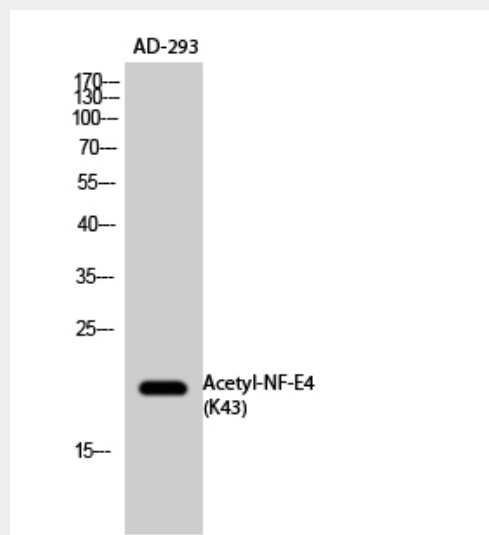
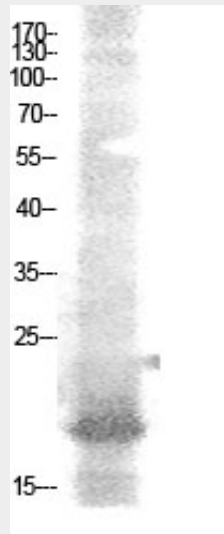
Specifically expressed in fetal liver, cord blood and bone marrow. Also expressed in the K562 and HEL cell lines, which constitutively express the fetal globin genes

NF-E4 (Acetyl Lys43) Polyclonal Antibody - Protocols

Provided below are standard protocols that you may find useful for product applications.

- [Western Blot](#)
- [Blocking Peptides](#)
- [Dot Blot](#)
- [Immunohistochemistry](#)
- [Immunofluorescence](#)
- [Immunoprecipitation](#)
- [Flow Cytometry](#)
- [Cell Culture](#)

NF-E4 (Acetyl Lys43) Polyclonal Antibody - Images



NF-E4 (Acetyl Lys43) Polyclonal Antibody - Background

Functions as part of the SSP (stage selector protein) complex, a complex that contributes to the preferential expression of the gamma-gene in fetal erythroid cells by facilitating the interaction of the gamma-globin genes with enhancer elements contained in the locus control region (LCR). The

complex binds to the stage selector element (SSE) in the proximal gamma-globin promoter. In contrast, isoform 2 acts as a repressor of gamma- globin gene expression by preventing NFE2 and RNA polymerase II recruitment to the promoter.