

Cytokeratin 8 (Acetyl Lys483) Polyclonal Antibody
Catalog # AP63228**Specification****Cytokeratin 8 (Acetyl Lys483) Polyclonal Antibody - Product Information**

Application	WB
Primary Accession	P05787
Reactivity	Human
Host	Rabbit
Clonality	Polyclonal

Cytokeratin 8 (Acetyl Lys483) Polyclonal Antibody - Additional Information**Gene ID** 3856**Other Names**

KRT8; CYK8; Keratin, type II cytoskeletal 8; Cytokeratin-8; CK-8; Keratin-8; K8; Type-II keratin Kb8

Dilution

WB~~Western Blot: 1/500 - 1/2000. IHC-p: 1:100-300 ELISA: 1/20000. Not yet tested in other applications.

Format

Liquid in PBS containing 50% glycerol, 0.5% BSA and 0.09% (W/V) sodium azide.

Storage Conditions

-20°C

Cytokeratin 8 (Acetyl Lys483) Polyclonal Antibody - Protein Information**Name** KRT8**Synonyms** CYK8**Function**

Together with KRT19, helps to link the contractile apparatus to dystrophin at the costameres of striated muscle.

Cellular Location

Cytoplasm. Nucleus, nucleoplasm {ECO:0000250|UniProtKB:Q10758}. Nucleus matrix {ECO:0000250|UniProtKB:Q10758}

Tissue Location

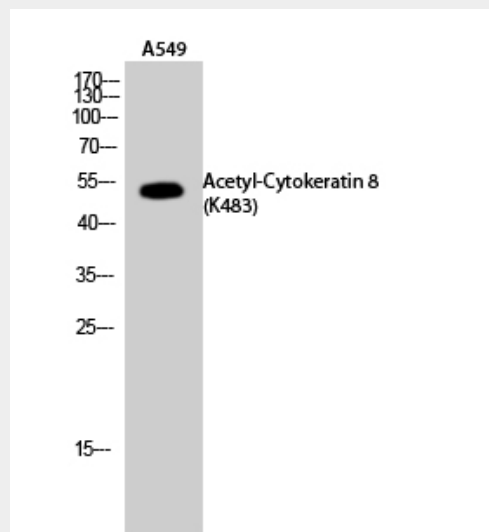
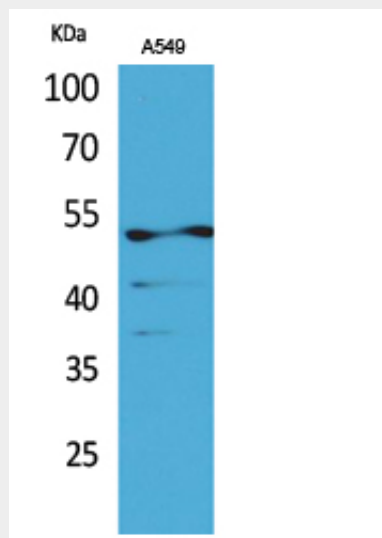
Observed in muscle fibers accumulating in the costameres of myoplasm at the sarcolemma membrane in structures that contain dystrophin and spectrin. Expressed in gingival mucosa and hard palate of the oral cavity.

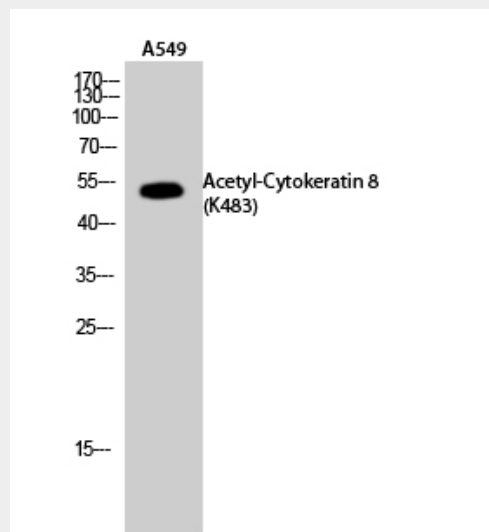
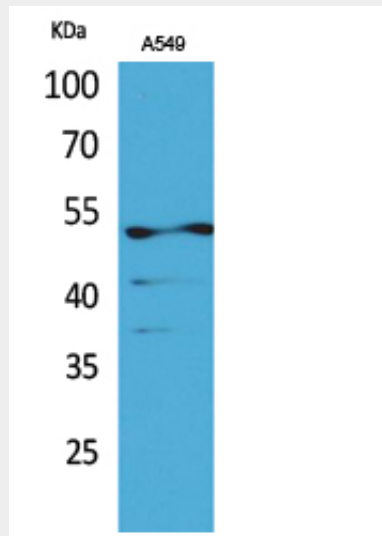
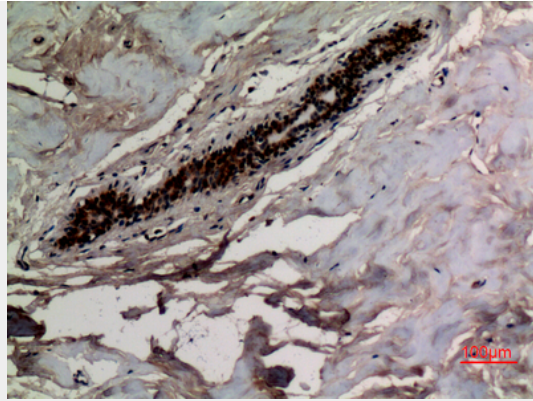
Cytokeratin 8 (Acetyl Lys483) Polyclonal Antibody - Protocols

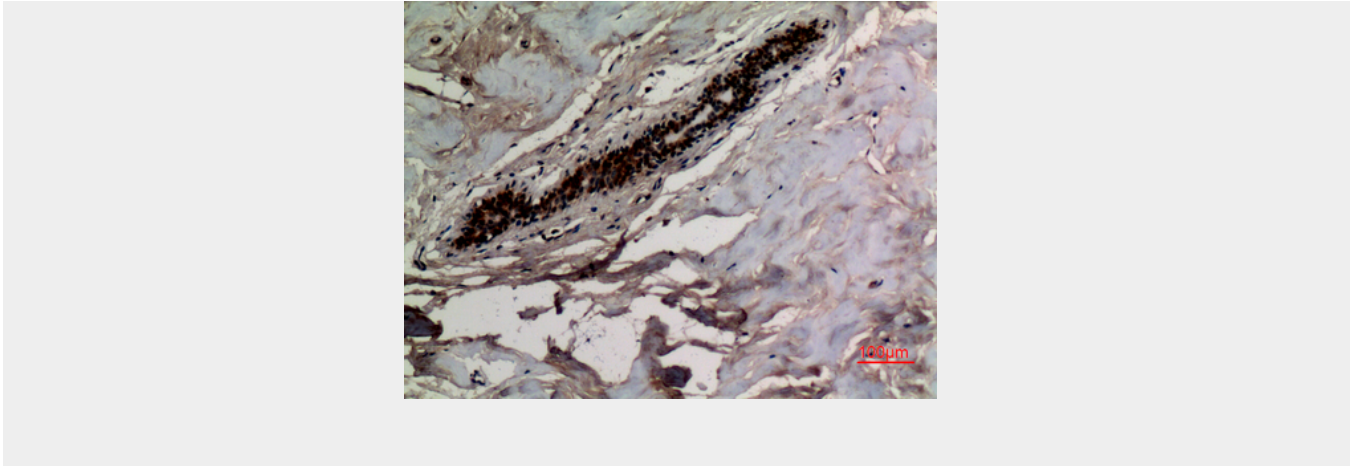
Provided below are standard protocols that you may find useful for product applications.

- [Western Blot](#)
- [Blocking Peptides](#)
- [Dot Blot](#)
- [Immunohistochemistry](#)
- [Immunofluorescence](#)
- [Immunoprecipitation](#)
- [Flow Cytometry](#)
- [Cell Culture](#)

Cytokeratin 8 (Acetyl Lys483) Polyclonal Antibody - Images







Cytokeratin 8 (Acetyl Lys483) Polyclonal Antibody - Background

Together with KRT19, helps to link the contractile apparatus to dystrophin at the costameres of striated muscle.