

Kallikrein 2 (KLK2) Antibody (C-term)
Affinity Purified Rabbit Polyclonal Antibody (Pab)
Catalog # AP6321b

Specification

Kallikrein 2 (KLK2) Antibody (C-term) - Product Information

Application	WB,E
Primary Accession	P20151
Other Accession	NP_005542
Reactivity	Human
Host	Rabbit
Clonality	Polyclonal
Isotype	Rabbit IgG
Calculated MW	28671
Antigen Region	166-197

Kallikrein 2 (KLK2) Antibody (C-term) - Additional Information

Gene ID 3817

Other Names

Kallikrein-2, Glandular kallikrein-1, hGK-1, Tissue kallikrein-2, KLK2

Target/Specificity

This Kallikrein 2 (KLK2) antibody is generated from rabbits immunized with a KLH conjugated synthetic peptide between 166-197 amino acids from the C-terminal region of human Kallikrein 2 (KLK2).

Dilution

WB~~1:1000

Format

Purified polyclonal antibody supplied in PBS with 0.09% (W/V) sodium azide. This antibody is prepared by Saturated Ammonium Sulfate (SAS) precipitation followed by dialysis against PBS.

Storage

Maintain refrigerated at 2-8°C for up to 2 weeks. For long term storage store at -20°C in small aliquots to prevent freeze-thaw cycles.

Precautions

Kallikrein 2 (KLK2) Antibody (C-term) is for research use only and not for use in diagnostic or therapeutic procedures.

Kallikrein 2 (KLK2) Antibody (C-term) - Protein Information

Name KLK2

Function Glandular kallikreins cleave Met-Lys and Arg-Ser bonds in kininogen to release

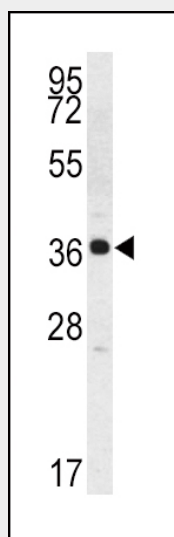
Lys-bradykinin.

Kallikrein 2 (KLK2) Antibody (C-term) - Protocols

Provided below are standard protocols that you may find useful for product applications.

- [Western Blot](#)
- [Blocking Peptides](#)
- [Dot Blot](#)
- [Immunohistochemistry](#)
- [Immunofluorescence](#)
- [Immunoprecipitation](#)
- [Flow Cytometry](#)
- [Cell Culture](#)

Kallikrein 2 (KLK2) Antibody (C-term) - Images



Western blot analysis of Kallikrein 2 (KLK2) Antibody (C-term) (Cat.# AP6321b) in K562 cell line lysates (35ug/lane). KLK2 (arrow) was detected using the purified Pab.

Kallikrein 2 (KLK2) Antibody (C-term) - Background

Kallikreins are a group of serine proteases manifesting diverse physiological functions. The glandular kallikreins are a distinct group of serine proteases with an ability to release vasoactive peptides from kininogen in vitro, although the kininogenase activity of different kallikreins is highly variable. Glandular kallikreins cleave Met-Lys and Arg-Ser bonds in kininogen to release Lys-bradykinin. Many kallikrein genes are differentially expressed in various malignancies. Human glandular kallikrein (hK2; encoded by the KLK2 gene) is an emerging tumor marker for prostate cancer.

Kallikrein 2 (KLK2) Antibody (C-term) - References

Haese, A., et al., J Urol. 2005 Mar;173(3):752-6. Chiang, C.H., et al., J Urol. 2005 Feb;173(2):429-32. Clements, J.A., et al., Crit Rev Clin Lab Sci. 2004;41(3):265-312. Borgono, C.A., et al., Mol Cancer Res. 2004 May;2(5):257-80. Yousef, G.M., Clin Biochem. 2003 Sep;36(6):443-52.

Kallikrein 2 (KLK2) Antibody (C-term) - Citations

- [Endothelial-Mesenchymal Transition in Vascular Calcification of Ins2Akita/+ Mice.](#)

