

Cleaved-Spectrin α II (D1185) Polyclonal Antibody
Catalog # AP63149**Specification**

Cleaved-Spectrin α II (D1185) Polyclonal Antibody - Product Information

Application	WB
Primary Accession	Q13813
Reactivity	Human
Host	Rabbit
Clonality	Polyclonal

Cleaved-Spectrin α II (D1185) Polyclonal Antibody - Additional Information**Gene ID** 6709**Other Names**

SPTAN1; NEAS; SPTA2; Spectrin alpha chain; non-erythrocytic 1; Alpha-II spectrin; Fodrin alpha chain; Spectrin, non-erythroid alpha subunit

Dilution

WB~~Western Blot: 1/500 - 1/2000. ELISA: 1/10000. Not yet tested in other applications.

Format

Liquid in PBS containing 50% glycerol, 0.5% BSA and 0.09% (W/V) sodium azide.

Storage Conditions

-20°C

Cleaved-Spectrin α II (D1185) Polyclonal Antibody - Protein Information**Name** SPTAN1**Synonyms** NEAS, SPTA2**Function**

Fodrin, which seems to be involved in secretion, interacts with calmodulin in a calcium-dependent manner and is thus candidate for the calcium-dependent movement of the cytoskeleton at the membrane.

Cellular Location

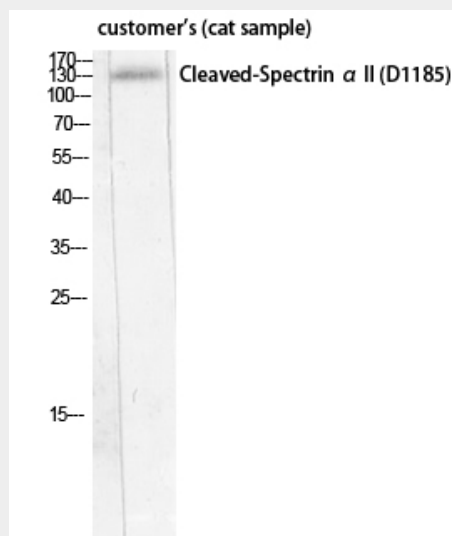
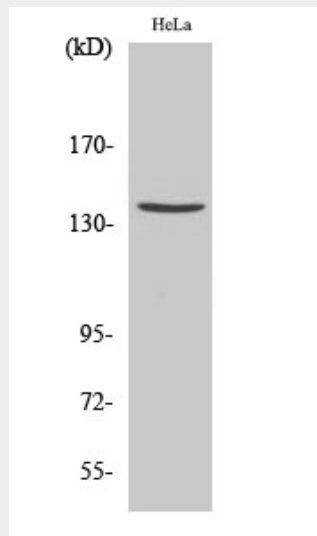
Cytoplasm, cytoskeleton. Cytoplasm, cell cortex. Note=Expressed along the cell membrane in podocytes and presumptive tubule cells during glomerulogenesis and is expressed along lateral cell margins in tubule cells.

Cleaved-Spectrin α II (D1185) Polyclonal Antibody - Protocols

Provided below are standard protocols that you may find useful for product applications.

- [Western Blot](#)
- [Blocking Peptides](#)
- [Dot Blot](#)
- [Immunohistochemistry](#)
- [Immunofluorescence](#)
- [Immunoprecipitation](#)
- [Flow Cytometry](#)
- [Cell Culture](#)

Cleaved-Spectrin α II (D1185) Polyclonal Antibody - Images



Cleaved-Spectrin α II (D1185) Polyclonal Antibody - Background

Fodrin, which seems to be involved in secretion, interacts with calmodulin in a calcium-dependent manner and is thus candidate for the calcium-dependent movement of the cytoskeleton at the membrane.