

Cleaved-MMP-23 (Y79) Polyclonal Antibody
Catalog # AP63139**Specification**

Cleaved-MMP-23 (Y79) Polyclonal Antibody - Product Information

Application	WB
Primary Accession	O75900
Reactivity	Human, Mouse, Rat
Host	Rabbit
Clonality	Polyclonal

Cleaved-MMP-23 (Y79) Polyclonal Antibody - Additional Information

Gene ID 8510

Other Names

MMP23A; MMP21; MMP23B; MMP21; MMP22; Matrix metalloproteinase-23; MMP-23; Femalysin; MIFR-1; Matrix metalloproteinase-21; MMP-21; Matrix metalloproteinase-22; MMP-22

Dilution

WB~~Western Blot: 1/500 - 1/2000. ELISA: 1/20000. Not yet tested in other applications.

Format

Liquid in PBS containing 50% glycerol, 0.5% BSA and 0.09% (W/V) sodium azide.

Storage Conditions

-20°C

Cleaved-MMP-23 (Y79) Polyclonal Antibody - Protein Information

Name MMP23B

Synonyms MMP21, MMP22

Function

Protease. May regulate the surface expression of some potassium channels by retaining them in the endoplasmic reticulum (By similarity).

Cellular Location

Endoplasmic reticulum membrane; Single-pass type II membrane protein. Membrane; Single-pass type II membrane protein. Note=A secreted form produced by proteolytic cleavage may also exist.

Tissue Location

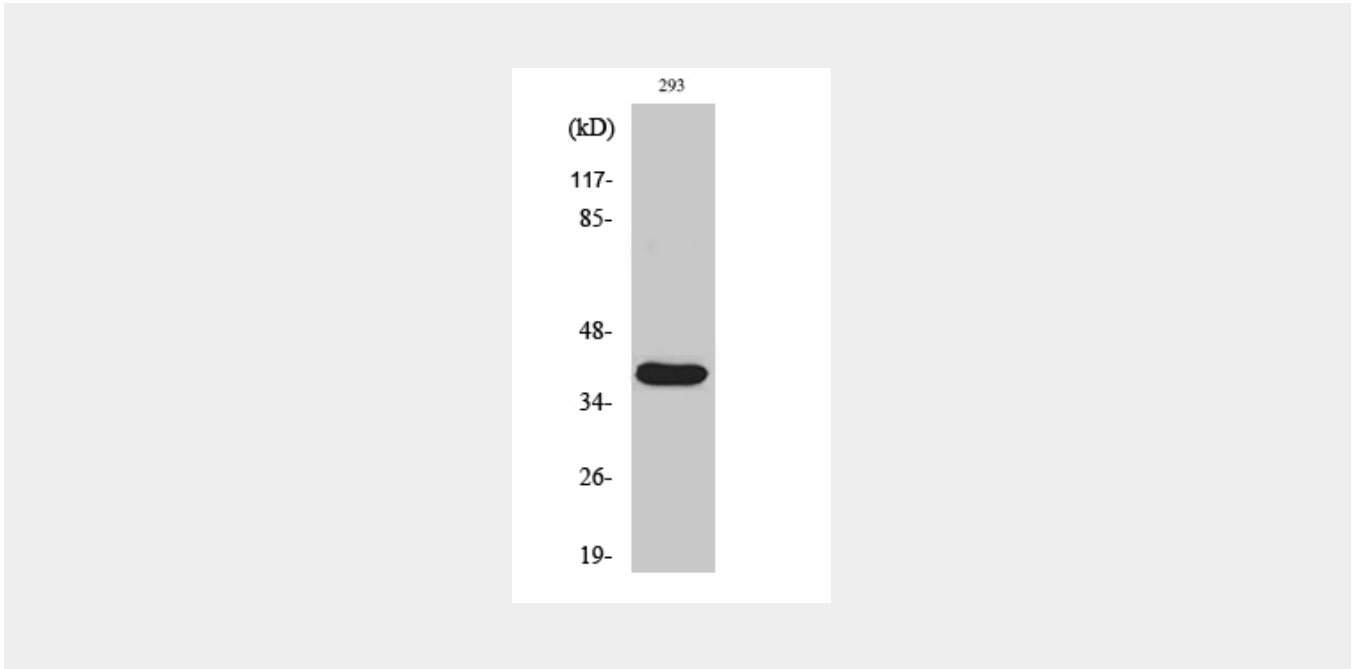
Predominantly expressed in ovary, testis and prostate.

Cleaved-MMP-23 (Y79) Polyclonal Antibody - Protocols

Provided below are standard protocols that you may find useful for product applications.

- [Western Blot](#)
- [Blocking Peptides](#)
- [Dot Blot](#)
- [Immunohistochemistry](#)
- [Immunofluorescence](#)
- [Immunoprecipitation](#)
- [Flow Cytometry](#)
- [Cell Culture](#)

Cleaved-MMP-23 (Y79) Polyclonal Antibody - Images



Cleaved-MMP-23 (Y79) Polyclonal Antibody - Background

Protease. May regulate the surface expression of some potassium channels by retaining them in the endoplasmic reticulum (By similarity).