

Cleaved-MMP-15 (Y132) Polyclonal Antibody Catalog # AP63137

Specification

Cleaved-MMP-15 (Y132) Polyclonal Antibody - Product Information

Application	WB
Primary Accession	P51511
Reactivity	Human, Monkey
Host	Rabbit
Clonality	Polyclonal

Cleaved-MMP-15 (Y132) Polyclonal Antibody - Additional Information

Gene ID 4324

Other Names

MMP15; Matrix metalloproteinase-15; MMP-15; Membrane-type matrix metalloproteinase 2; MT-MMP 2; MTMMP2; Membrane-type-2 matrix metalloproteinase; MT2-MMP; MT2MMP; SMCP-2

Dilution

WB~~Western Blot: 1/500 - 1/2000. ELISA: 1/10000. Not yet tested in other applications.

Format

Liquid in PBS containing 50% glycerol, 0.5% BSA and 0.09% (W/V) sodium azide.

Storage Conditions

-20°C

Cleaved-MMP-15 (Y132) Polyclonal Antibody - Protein Information

Name MMP15

Function

Endopeptidase that degrades various components of the extracellular matrix. May activate progelatinase A.

Cellular Location

Membrane; Single-pass type I membrane protein; Extracellular side

Tissue Location

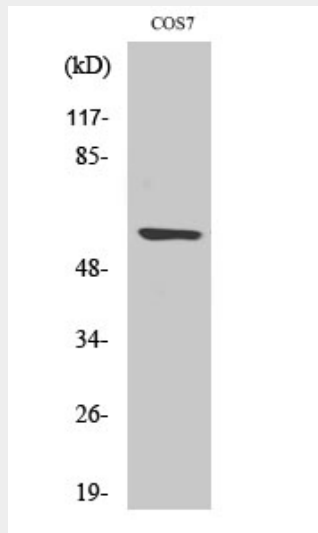
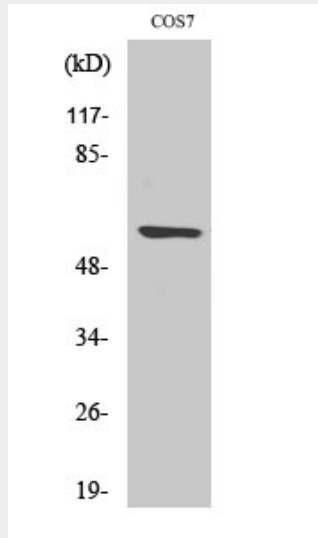
Appeared to be synthesized preferentially in liver, placenta, testis, colon and intestine. Substantial amounts are also detected in pancreas, kidney, lung, heart and skeletal muscle

Cleaved-MMP-15 (Y132) Polyclonal Antibody - Protocols

Provided below are standard protocols that you may find useful for product applications.

- [Western Blot](#)
- [Blocking Peptides](#)
- [Dot Blot](#)
- [Immunohistochemistry](#)
- [Immunofluorescence](#)
- [Immunoprecipitation](#)
- [Flow Cytometry](#)
- [Cell Culture](#)

Cleaved-MMP-15 (Y132) Polyclonal Antibody - Images



Cleaved-MMP-15 (Y132) Polyclonal Antibody - Background

Endopeptidase that degrades various components of the extracellular matrix. May activate progelatinase A.