

Cleaved-MMP-12 (G106) Polyclonal Antibody
Catalog # AP63135**Specification**

Cleaved-MMP-12 (G106) Polyclonal Antibody - Product Information

Application	WB
Primary Accession	P39900
Reactivity	Human
Host	Rabbit
Clonality	Polyclonal

Cleaved-MMP-12 (G106) Polyclonal Antibody - Additional Information**Gene ID** 4321**Other Names**

MMP12; HME; Macrophage metalloelastase; MME; Macrophage elastase; ME; hME; Matrix metalloproteinase-12; MMP-12

Dilution

WB~~Western Blot: 1/500 - 1/2000. ELISA: 1/20000. Not yet tested in other applications.

Format

Liquid in PBS containing 50% glycerol, 0.5% BSA and 0.09% (W/V) sodium azide.

Storage Conditions

-20°C

Cleaved-MMP-12 (G106) Polyclonal Antibody - Protein Information**Name** MMP12**Synonyms** HME**Function**

May be involved in tissue injury and remodeling. Has significant elastolytic activity. Can accept large and small amino acids at the P1' site, but has a preference for leucine. Aromatic or hydrophobic residues are preferred at the P1 site, with small hydrophobic residues (preferably alanine) occupying P3.

Cellular Location

Secreted, extracellular space, extracellular matrix

Tissue Location

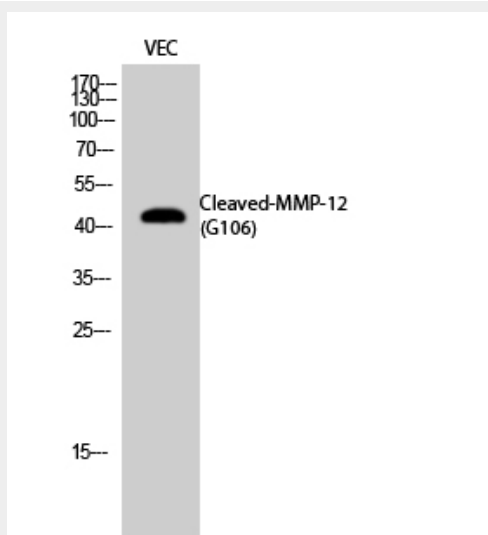
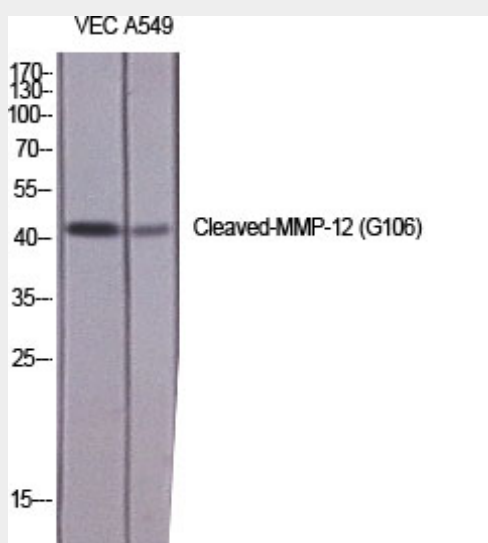
Found in alveolar macrophages but not in peripheral blood monocytes

Cleaved-MMP-12 (G106) Polyclonal Antibody - Protocols

Provided below are standard protocols that you may find useful for product applications.

- [Western Blot](#)
- [Blocking Peptides](#)
- [Dot Blot](#)
- [Immunohistochemistry](#)
- [Immunofluorescence](#)
- [Immunoprecipitation](#)
- [Flow Cytometry](#)
- [Cell Culture](#)

Cleaved-MMP-12 (G106) Polyclonal Antibody - Images



Cleaved-MMP-12 (G106) Polyclonal Antibody - Background

May be involved in tissue injury and remodeling. Has significant elastolytic activity. Can accept

large and small amino acids at the P1' site, but has a preference for leucine. Aromatic or hydrophobic residues are preferred at the P1 site, with small hydrophobic residues (preferably alanine) occupying P3.