

**Cleaved-KLK11 (I54) Polyclonal Antibody**  
Catalog # AP63130**Specification**

---

**Cleaved-KLK11 (I54) Polyclonal Antibody - Product Information**

Application	WB
Primary Accession	<a href="#">Q9UBX7</a>
Reactivity	Human
Host	Rabbit
Clonality	Polyclonal

**Cleaved-KLK11 (I54) Polyclonal Antibody - Additional Information****Gene ID** 11012**Other Names**

KLK11; PRSS20; TLSP; Kallikrein-11; hK11; Hippostasin; Serine protease 20; Trypsin-like protease

**Dilution**

WB~~Western Blot: 1/500 - 1/2000. ELISA: 1/10000. Not yet tested in other applications.

**Format**

Liquid in PBS containing 50% glycerol, 0.5% BSA and 0.09% (W/V) sodium azide.

**Storage Conditions**

-20°C

**Cleaved-KLK11 (I54) Polyclonal Antibody - Protein Information****Name** KLK11**Synonyms** PRSS20, TLSP**Function**

Possible multifunctional protease. Efficiently cleaves 'bz- Phe-Arg-4-methylcoumaryl-7-amide', a kallikrein substrate, and weakly cleaves other substrates for kallikrein and trypsin. Cleaves synthetic peptides after arginine but not lysine residues.

**Cellular Location**

[Isoform 1]: Secreted.

**Tissue Location**

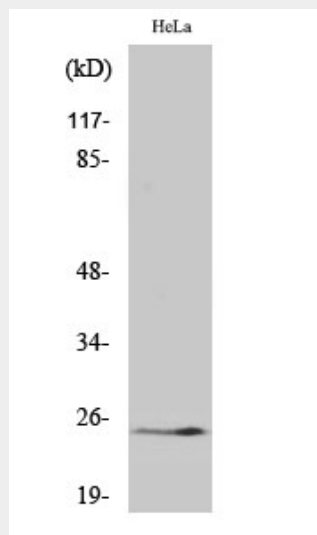
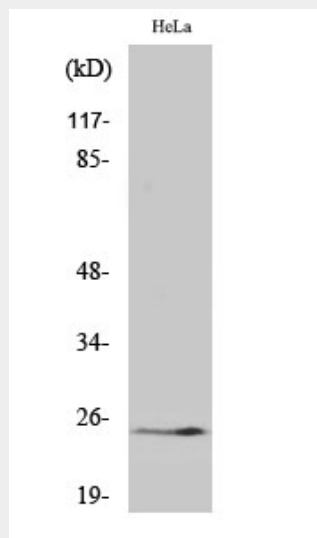
Expressed in brain, skin and prostate. Isoform 1 is expressed preferentially in brain. Isoform 2 is expressed in prostate Present in seminal plasma at concentrations ranging from 2 to 37 microg/mL (at protein level).

## Cleaved-KLK11 (I54) Polyclonal Antibody - Protocols

Provided below are standard protocols that you may find useful for product applications.

- [Western Blot](#)
- [Blocking Peptides](#)
- [Dot Blot](#)
- [Immunohistochemistry](#)
- [Immunofluorescence](#)
- [Immunoprecipitation](#)
- [Flow Cytometry](#)
- [Cell Culture](#)

## Cleaved-KLK11 (I54) Polyclonal Antibody - Images



## Cleaved-KLK11 (I54) Polyclonal Antibody - Background

Possible multifunctional protease. Efficiently cleaves 'bz-Phe-Arg-4-methylcoumaryl-7-amide', a

kallikrein substrate, and weakly cleaves other substrates for kallikrein and trypsin. Cleaves synthetic peptides after arginine but not lysine residues.