

## Cleaved-Ephrin-A2 (N188) Polyclonal Antibody Catalog # AP63127

### Specification

---

#### Cleaved-Ephrin-A2 (N188) Polyclonal Antibody - Product Information

Application	WB
Primary Accession	<a href="#">O43921</a>
Reactivity	Human, Mouse
Host	Rabbit
Clonality	Polyclonal

#### Cleaved-Ephrin-A2 (N188) Polyclonal Antibody - Additional Information

Gene ID 1943

#### Other Names

EFNA2; EPLG6; LERK6; Ephrin-A2; EPH-related receptor tyrosine kinase ligand 6; LERK-6; HEK7 ligand; HEK7-L

#### Dilution

WB~~Western Blot: 1/500 - 1/2000. ELISA: 1/20000. Not yet tested in other applications.

#### Format

Liquid in PBS containing 50% glycerol, 0.5% BSA and 0.09% (W/V) sodium azide.

#### Storage Conditions

-20°C

#### Cleaved-Ephrin-A2 (N188) Polyclonal Antibody - Protein Information

Name EFNA2

Synonyms EPLG6, LERK6

#### Function

Cell surface GPI-bound ligand for Eph receptors, a family of receptor tyrosine kinases which are crucial for migration, repulsion and adhesion during neuronal, vascular and epithelial development. Binds promiscuously Eph receptors residing on adjacent cells, leading to contact-dependent bidirectional signaling into neighboring cells. The signaling pathway downstream of the receptor is referred to as forward signaling while the signaling pathway downstream of the ephrin ligand is referred to as reverse signaling. With the EPHA2 receptor may play a role in bone remodeling through regulation of osteoclastogenesis and osteoblastogenesis (By similarity).

#### Cellular Location

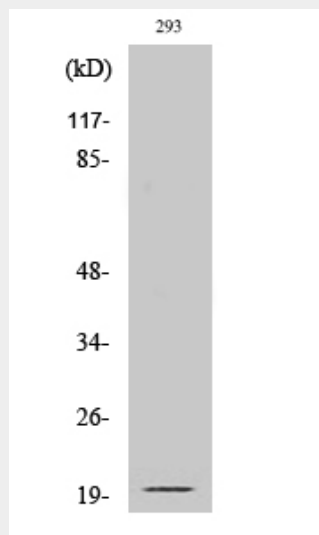
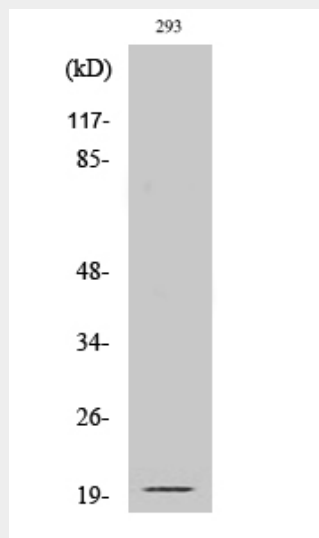
Cell membrane; Lipid-anchor, GPI- anchor

## Cleaved-Ephrin-A2 (N188) Polyclonal Antibody - Protocols

Provided below are standard protocols that you may find useful for product applications.

- [Western Blot](#)
- [Blocking Peptides](#)
- [Dot Blot](#)
- [Immunohistochemistry](#)
- [Immunofluorescence](#)
- [Immunoprecipitation](#)
- [Flow Cytometry](#)
- [Cell Culture](#)

## Cleaved-Ephrin-A2 (N188) Polyclonal Antibody - Images



## Cleaved-Ephrin-A2 (N188) Polyclonal Antibody - Background

Cell surface GPI-bound ligand for Eph receptors, a family of receptor tyrosine kinases which are

crucial for migration, repulsion and adhesion during neuronal, vascular and epithelial development. Binds promiscuously Eph receptors residing on adjacent cells, leading to contact-dependent bidirectional signaling into neighboring cells. The signaling pathway downstream of the receptor is referred to as forward signaling while the signaling pathway downstream of the ephrin ligand is referred to as reverse signaling. With the EPHA2 receptor may play a role in bone remodeling through regulation of osteoclastogenesis and osteoblastogenesis (By similarity).