

Cleaved-COL3A1 (G1221) Polyclonal Antibody
Catalog # AP63125**Specification**

Cleaved-COL3A1 (G1221) Polyclonal Antibody - Product Information

Application	WB
Primary Accession	P02461
Reactivity	Human
Host	Rabbit
Clonality	Polyclonal

Cleaved-COL3A1 (G1221) Polyclonal Antibody - Additional Information**Gene ID** 1281**Other Names**

COL3A1; Collagen alpha-1(III) chain

Dilution

WB~~Western Blot: 1/500 - 1/2000. ELISA: 1/10000. Not yet tested in other applications.

Format

Liquid in PBS containing 50% glycerol, 0.5% BSA and 0.09% (W/V) sodium azide.

Storage Conditions

-20°C

Cleaved-COL3A1 (G1221) Polyclonal Antibody - Protein Information**Name** COL3A1**Function**

Collagen type III occurs in most soft connective tissues along with type I collagen. Involved in regulation of cortical development. Is the major ligand of ADGRG1 in the developing brain and binding to ADGRG1 inhibits neuronal migration and activates the RhoA pathway by coupling ADGRG1 to GNA13 and possibly GNA12.

Cellular Location

Secreted, extracellular space, extracellular matrix {ECO:0000255|PROSITE-ProRule:PRU00793}

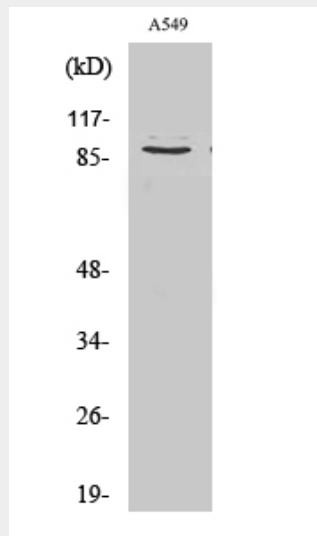
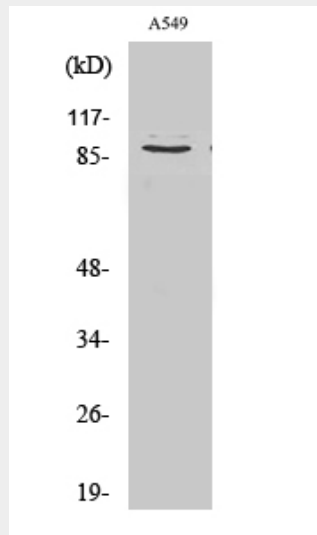
Cleaved-COL3A1 (G1221) Polyclonal Antibody - Protocols

Provided below are standard protocols that you may find useful for product applications.

- [Western Blot](#)
- [Blocking Peptides](#)

- [Dot Blot](#)
- [Immunohistochemistry](#)
- [Immunofluorescence](#)
- [Immunoprecipitation](#)
- [Flow Cytometry](#)
- [Cell Culture](#)

Cleaved-COL3A1 (G1221) Polyclonal Antibody - Images



Cleaved-COL3A1 (G1221) Polyclonal Antibody - Background

Collagen type III occurs in most soft connective tissues along with type I collagen. Involved in regulation of cortical development. Is the major ligand of ADGRG1 in the developing brain and binding to ADGRG1 inhibits neuronal migration and activates the RhoA pathway by coupling ADGRG1 to GNA13 and possibly GNA12.