

Cleaved-Cathepsin L1 HC (T288) Polyclonal Antibody
Catalog # AP63116**Specification****Cleaved-Cathepsin L1 HC (T288) Polyclonal Antibody - Product Information**

Application	WB
Primary Accession	P07711
Reactivity	Human
Host	Rabbit
Clonality	Polyclonal

Cleaved-Cathepsin L1 HC (T288) Polyclonal Antibody - Additional Information**Gene ID** 1514**Other Names**

CTSL1; CTSL; Cathepsin L1; Major excreted protein; MEP

Dilution

WB~~Western Blot: 1/500 - 1/2000. ELISA: 1/10000. Not yet tested in other applications.

Format

Liquid in PBS containing 50% glycerol, 0.5% BSA and 0.09% (W/V) sodium azide.

Storage Conditions

-20°C

Cleaved-Cathepsin L1 HC (T288) Polyclonal Antibody - Protein Information**Name** CTSL ([HGNC:2537](#))**Synonyms** CTSL1**Function**

Thiol protease important for the overall degradation of proteins in lysosomes (Probable). Plays a critical for normal cellular functions such as general protein turnover, antigen processing and bone remodeling. Involved in the solubilization of cross-linked TG/thyroglobulin and in the subsequent release of thyroid hormone thyroxine (T4) by limited proteolysis of TG/thyroglobulin in the thyroid follicle lumen (By similarity). In neuroendocrine chromaffin cells secretory vesicles, catalyzes the prohormone proenkephalin processing to the active enkephalin peptide neurotransmitter (By similarity). In thymus, regulates CD4(+) T cell positive selection by generating the major histocompatibility complex class II (MHCII) bound peptide ligands presented by cortical thymic epithelial cells. Also mediates invariant chain processing in cortical thymic epithelial cells (By similarity). Major elastin-degrading enzyme at neutral pH. Accumulates as a mature and active enzyme in the extracellular space of antigen presenting cells (APCs) to regulate degradation of the extracellular matrix in the course of inflammation (By similarity). Secreted form generates endostatin from COL18A1 (PubMed:10716919). Critical for cardiac morphology and function. Plays an important

role in hair follicle morphogenesis and cycling, as well as epidermal differentiation (By similarity). Required for maximal stimulation of steroidogenesis by TIMP1 (By similarity).

Cellular Location

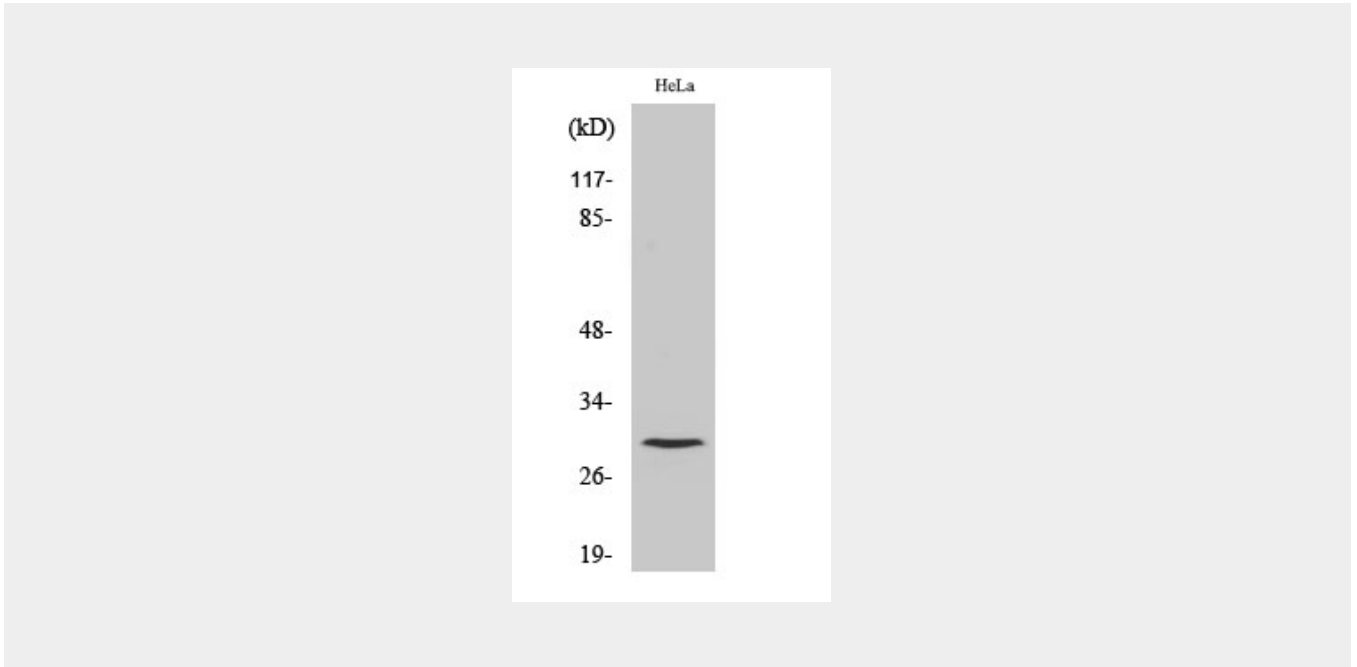
Lysosome {ECO:0000250|UniProtKB:P06797}. Apical cell membrane {ECO:0000250|UniProtKB:P06797}; Peripheral membrane protein {ECO:0000250|UniProtKB:P06797}; Extracellular side {ECO:0000250|UniProtKB:P06797}. Cytoplasmic vesicle, secretory vesicle, chromaffin granule {ECO:0000250|UniProtKB:P25975}. Secreted, extracellular space {ECO:0000250|UniProtKB:P06797}. Secreted {ECO:0000250|UniProtKB:P06797}. Note=Localizes to the apical membrane of thyroid epithelial cells. Released at extracellular space by activated dendritic cells and macrophages {ECO:0000250|UniProtKB:P06797}

Cleaved-Cathepsin L1 HC (T288) Polyclonal Antibody - Protocols

Provided below are standard protocols that you may find useful for product applications.

- [Western Blot](#)
- [Blocking Peptides](#)
- [Dot Blot](#)
- [Immunohistochemistry](#)
- [Immunofluorescence](#)
- [Immunoprecipitation](#)
- [Flow Cytometry](#)
- [Cell Culture](#)

Cleaved-Cathepsin L1 HC (T288) Polyclonal Antibody - Images



Cleaved-Cathepsin L1 HC (T288) Polyclonal Antibody - Background

Important for the overall degradation of proteins in lysosomes.