

Cleaved-C1s HC (R437) Polyclonal Antibody
Catalog # AP63095**Specification**

Cleaved-C1s HC (R437) Polyclonal Antibody - Product Information

Application	WB
Primary Accession	P09871
Reactivity	Human
Host	Rabbit
Clonality	Polyclonal

Cleaved-C1s HC (R437) Polyclonal Antibody - Additional Information**Gene ID** 716**Other Names**

C15; Complement C1s subcomponent; C1 esterase; Complement component 1 subcomponent s

Dilution

WB~~Western Blot: 1/500 - 1/2000. ELISA: 1/20000. Not yet tested in other applications.

Format

Liquid in PBS containing 50% glycerol, 0.5% BSA and 0.09% (W/V) sodium azide.

Storage Conditions

-20°C

Cleaved-C1s HC (R437) Polyclonal Antibody - Protein Information**Name** C15**Function**

C1s B chain is a serine protease that combines with C1q and C1r to form C1, the first component of the classical pathway of the complement system. C1r activates C1s so that it can, in turn, activate C2 and C4. Cleaves also IGFBP5 and thereby inhibits the trophic effects of IGF1.

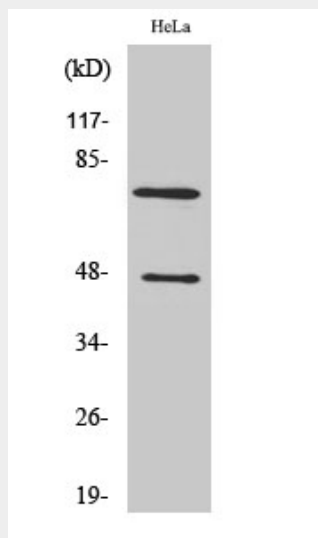
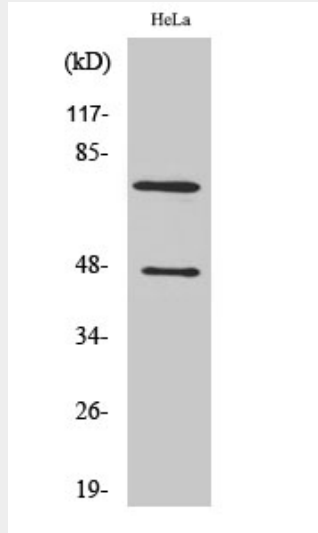
Cleaved-C1s HC (R437) Polyclonal Antibody - Protocols

Provided below are standard protocols that you may find useful for product applications.

- [Western Blot](#)
- [Blocking Peptides](#)
- [Dot Blot](#)
- [Immunohistochemistry](#)
- [Immunofluorescence](#)
- [Immunoprecipitation](#)

- [Flow Cytometry](#)
- [Cell Culture](#)

Cleaved-C1s HC (R437) Polyclonal Antibody - Images



Cleaved-C1s HC (R437) Polyclonal Antibody - Background

C1s B chain is a serine protease that combines with C1q and C1r to form C1, the first component of the classical pathway of the complement system. C1r activates C1s so that it can, in turn, activate C2 and C4.