

**CD14 Antibody (C-term)**  
**Purified Rabbit Polyclonal Antibody (Pab)**  
**Catalog # AP6294B****Specification**

---

**CD14 Antibody (C-term) - Product Information**

Application	<b>WB, IHC-P, FC,E</b>
Primary Accession	<a href="#">P08571</a>
Reactivity	<b>Human</b>
Host	<b>Rabbit</b>
Clonality	<b>Polyclonal</b>
Isotype	<b>Rabbit IgG</b>
Antigen Region	<b>292-322</b>

**CD14 Antibody (C-term) - Additional Information****Gene ID** 929**Other Names**

Monocyte differentiation antigen CD14, Myeloid cell-specific leucine-rich glycoprotein, CD14, Monocyte differentiation antigen CD14, urinary form, Monocyte differentiation antigen CD14, membrane-bound form, CD14

**Target/Specificity**

This CD14 antibody is generated from rabbits immunized with a KLH conjugated synthetic peptide between 292-322 amino acids from the C-terminal region of human CD14.

**Dilution**

WB~~1:1000  
IHC-P~~1:10~50  
FC~~1:10~50

**Format**

Purified polyclonal antibody supplied in PBS with 0.09% (W/V) sodium azide. This antibody is prepared by Saturated Ammonium Sulfate (SAS) precipitation followed by dialysis against PBS.

**Storage**

Maintain refrigerated at 2-8°C for up to 2 weeks. For long term storage store at -20°C in small aliquots to prevent freeze-thaw cycles.

**Precautions**

CD14 Antibody (C-term) is for research use only and not for use in diagnostic or therapeutic procedures.

**CD14 Antibody (C-term) - Protein Information****Name** CD14

**Function** Coreceptor for bacterial lipopolysaccharide (PubMed:[1698311](#), PubMed:[23264655](#)). In concert with LBP, binds to monomeric lipopolysaccharide and delivers it to the LY96/TLR4 complex, thereby mediating the innate immune response to bacterial lipopolysaccharide (LPS) (PubMed:[20133493](#), PubMed:[22265692](#), PubMed:[23264655](#)). Acts via MyD88, TIRAP and TRAF6, leading to NF-kappa-B activation, cytokine secretion and the inflammatory response (PubMed:[8612135](#)). Acts as a coreceptor for TLR2:TLR6 heterodimer in response to diacylated lipopeptides and for TLR2:TLR1 heterodimer in response to triacylated lipopeptides, these clusters trigger signaling from the cell surface and subsequently are targeted to the Golgi in a lipid-raft dependent pathway (PubMed:[16880211](#)). Binds electronegative LDL (LDL(-)) and mediates the cytokine release induced by LDL(-) (PubMed:[23880187](#)).

#### Cellular Location

Cell membrane; Lipid-anchor, GPI-anchor. Secreted. Membrane raft. Golgi apparatus.  
Note=Secreted forms may arise by cleavage of the GPI anchor.

#### Tissue Location

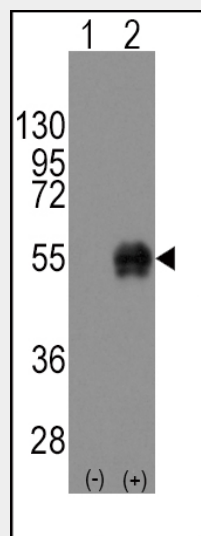
Detected on macrophages (at protein level) (PubMed:[1698311](#)). Expressed strongly on the surface of monocytes and weakly on the surface of granulocytes; also expressed by most tissue macrophages.

### CD14 Antibody (C-term) - Protocols

Provided below are standard protocols that you may find useful for product applications.

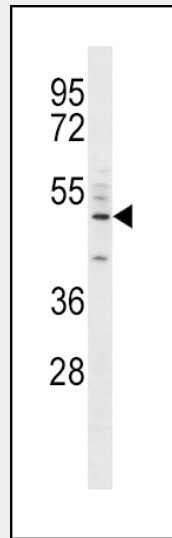
- [Western Blot](#)
- [Blocking Peptides](#)
- [Dot Blot](#)
- [Immunohistochemistry](#)
- [Immunofluorescence](#)
- [Immunoprecipitation](#)
- [Flow Cytometry](#)
- [Cell Culture](#)

### CD14 Antibody (C-term) - Images

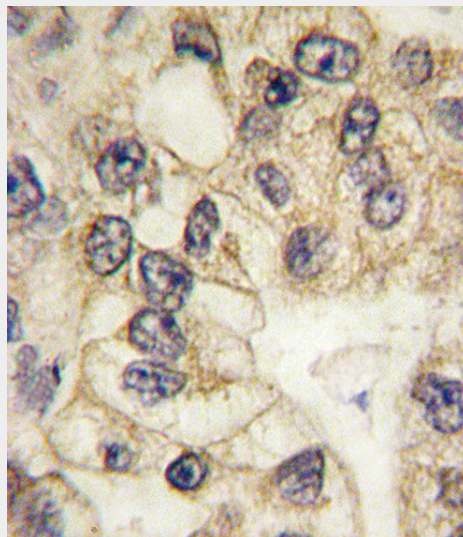


Western blot analysis of CD14 (arrow) using rabbit polyclonal CD14 Antibody (C-term) (Cat.#AP6294b). 293 cell lysates (2 ug/lane) either nontransfected (Lane 1) or transiently

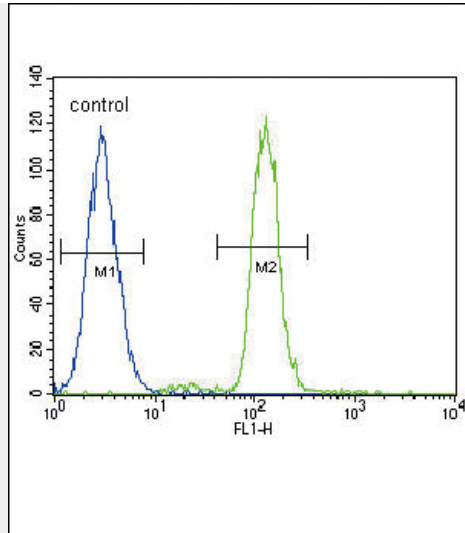
transfected with the CD14 gene (Lane 2) (Origene Technologies).



CD14 Antibody (C-term) (Cat.#AP6294b) western blot analysis in A549 cell line lysates (35ug/lane). This demonstrates the CD14 antibody detected the CD14 protein (arrow).



Formalin-fixed and paraffin-embedded human lung carcinoma tissue reacted with CD14 antibody (C-term) (Cat.#AP6294b), which was peroxidase-conjugated to the secondary antibody, followed by DAB staining. This data demonstrates the use of this antibody for immunohistochemistry; clinical relevance has not been evaluated.



CD14 Antibody (C-term) (Cat. #AP6294b) flow cytometric analysis of A549 cells (right histogram) compared to a negative control cell (left histogram). FITC-conjugated goat-anti-rabbit secondary antibodies were used for the analysis.

#### **CD14 Antibody (C-term) - Background**

CD14 is a surface protein preferentially expressed on monocytes/macrophages. It binds lipopolysaccharide binding protein and recently has been shown to bind apoptotic cells.

#### **CD14 Antibody (C-term) - References**

- Donati, M., J. Periodontol. 79 (3), 517-524 (2008)
- Yuan, F.F., Immunol. Cell Biol. 86 (3), 268-270 (2008)
- Setoguchi, M., Biochim. Biophys. Acta 1008 (2), 213-222 (1989)
- Goyert, S.M., Science 239 (4839), 497-500 (1988)