

**MEF2C Antibody (T300)**  
**Affinity Purified Rabbit Polyclonal Antibody (Pab)**  
**Catalog # AP6285d**

**Specification**

---

**MEF2C Antibody (T300) - Product Information**

Application	WB, IHC-P,E
Primary Accession	<a href="#">Q06413</a>
Other Accession	<a href="#">A4UTP7</a> , <a href="#">Q8CFN5</a> , <a href="#">Q2KIA0</a> , <a href="#">A0A096MJY4</a>
Reactivity	Human
Predicted	Bovine, Mouse, Pig, Rat
Host	Rabbit
Clonality	Polyclonal
Isotype	Rabbit IgG
Calculated MW	51221
Antigen Region	278-307

**MEF2C Antibody (T300) - Additional Information**

**Gene ID** 4208

**Other Names**

Myocyte-specific enhancer factor 2C, MEF2C

**Target/Specificity**

This MEF2C antibody is generated from rabbits immunized with a KLH conjugated synthetic peptide between 278-307 amino acids from human MEF2C.

**Dilution**

WB~~1:1000  
IHC-P~~1:10~50

**Format**

Purified polyclonal antibody supplied in PBS with 0.09% (W/V) sodium azide. This antibody is purified through a protein A column, followed by peptide affinity purification.

**Storage**

Maintain refrigerated at 2-8°C for up to 2 weeks. For long term storage store at -20°C in small aliquots to prevent freeze-thaw cycles.

**Precautions**

MEF2C Antibody (T300) is for research use only and not for use in diagnostic or therapeutic procedures.

**MEF2C Antibody (T300) - Protein Information**

**Name** MEF2C ([HGNC:6996](#))

**Function** Transcription activator which binds specifically to the MEF2 element present in the regulatory regions of many muscle-specific genes. Controls cardiac morphogenesis and myogenesis, and is also involved in vascular development. Enhances transcriptional activation mediated by SOX18. Plays an essential role in hippocampal-dependent learning and memory by suppressing the number of excitatory synapses and thus regulating basal and evoked synaptic transmission. Crucial for normal neuronal development, distribution, and electrical activity in the neocortex. Necessary for proper development of megakaryocytes and platelets and for bone marrow B-lymphopoiesis. Required for B-cell survival and proliferation in response to BCR stimulation, efficient IgG1 antibody responses to T-cell-dependent antigens and for normal induction of germinal center B-cells. May also be involved in neurogenesis and in the development of cortical architecture (By similarity). Isoforms that lack the repressor domain are more active than isoform 1.

#### Cellular Location

Nucleus {ECO:0000250|UniProtKB:A0A096MJY4}. Cytoplasm, sarcoplasm {ECO:0000250|UniProtKB:A0A096MJY4}

#### Tissue Location

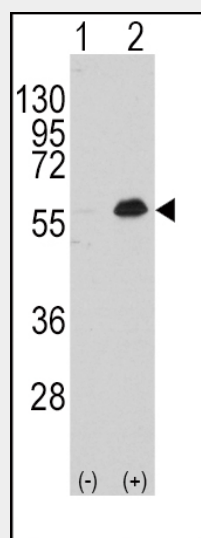
Expressed in brain and skeletal muscle.

### MEF2C Antibody (T300) - Protocols

Provided below are standard protocols that you may find useful for product applications.

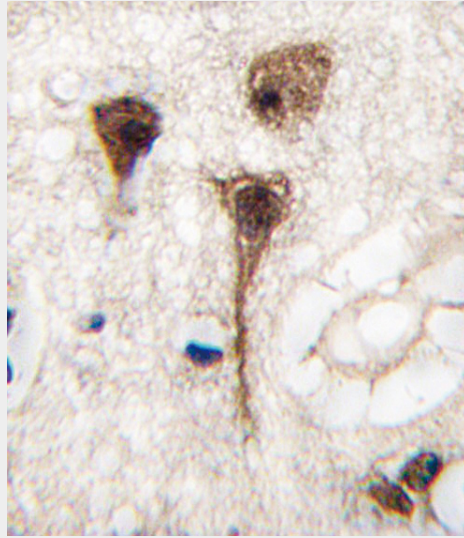
- [Western Blot](#)
- [Blocking Peptides](#)
- [Dot Blot](#)
- [Immunohistochemistry](#)
- [Immunofluorescence](#)
- [Immunoprecipitation](#)
- [Flow Cytometry](#)
- [Cell Culture](#)

### MEF2C Antibody (T300) - Images



Western blot analysis of MEF2C (arrow) using rabbit polyclonal MEF2C Antibody (T300) (RB11009). 293 cell lysates (2 ug/lane) either nontransfected (Lane 1) or transiently transfected

with the MEF2C gene (Lane 2) (Origene Technologies).



Formalin-fixed and paraffin-embedded human brain tissue reacted with MEF2C Antibody (T300), which was peroxidase-conjugated to the secondary antibody, followed by DAB staining. This data demonstrates the use of this antibody for immunohistochemistry; clinical relevance has not been evaluated.

#### **MEF2C Antibody (T300) - Background**

MEF2C is a transcription activator which binds specifically to the MEF2 element present in the regulatory regions of many muscle-specific genes. This protein controls cardiac morphogenesis and myogenesis, and is also involved in vascular development. It may also be involved in neurogenesis and in the development of cortical architecture.

#### **MEF2C Antibody (T300) - References**

- Konig, S., et al., J. Biol. Chem. 279(27):28187-28196 (2004).
- Maeda, T., et al., J. Biol. Chem. 277(50):48889-48898 (2002).
- Maeda, T., et al., Biochem. Biophys. Res. Commun. 294(4):791-797 (2002).
- Janson, C.G., et al., Brain Res. Mol. Brain Res. 97(1):70-82 (2001).
- Krainc, D., et al., Genomics 29(3):809-811 (1995).