

ELK1 Antibody (S383)
Affinity Purified Rabbit Polyclonal Antibody (Pab)
Catalog # AP6282A

Specification

ELK1 Antibody (S383) - Product Information

Application	WB,E
Primary Accession	P19419
Other Accession	P41969 , A4GTP4
Reactivity	Human
Predicted	Mouse, Rat
Host	Rabbit
Clonality	Polyclonal
Isotype	Rabbit IgG
Calculated MW	44888
Antigen Region	361-390

ELK1 Antibody (S383) - Additional Information

Gene ID 2002

Other Names

ETS domain-containing protein Elk-1, ELK1

Target/Specificity

This ELK1 antibody is generated from rabbits immunized with a KLH conjugated synthetic peptide between 361-390 amino acids from human ELK1.

Dilution

WB~~1:1000

Format

Purified polyclonal antibody supplied in PBS with 0.09% (W/V) sodium azide. This antibody is purified through a protein A column, followed by peptide affinity purification.

Storage

Maintain refrigerated at 2-8°C for up to 2 weeks. For long term storage store at -20°C in small aliquots to prevent freeze-thaw cycles.

Precautions

ELK1 Antibody (S383) is for research use only and not for use in diagnostic or therapeutic procedures.

ELK1 Antibody (S383) - Protein Information

Name ELK1 ([HGNC:3321](#))

Function Transcription factor that binds to purine-rich DNA sequences (PubMed:[10799319](#),

PubMed:[7889942](#)). Forms a ternary complex with SRF and the ETS and SRF motifs of the serum response element (SRE) on the promoter region of immediate early genes such as FOS and IER2 (PubMed:[1630903](#)). Induces target gene transcription upon JNK and MAPK- signaling pathways stimulation (PubMed:[7889942](#)).

Cellular Location

Nucleus.

Tissue Location

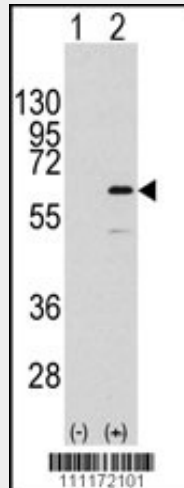
Lung and testis.

ELK1 Antibody (S383) - Protocols

Provided below are standard protocols that you may find useful for product applications.

- [Western Blot](#)
- [Blocking Peptides](#)
- [Dot Blot](#)
- [Immunohistochemistry](#)
- [Immunofluorescence](#)
- [Immunoprecipitation](#)
- [Flow Cytometry](#)
- [Cell Culture](#)

ELK1 Antibody (S383) - Images



Western blot analysis of ELK1 (arrow) using rabbit polyclonal ELK1 Antibody (S383) (RB11172). 293 cell lysates (2 ug/lane) either nontransfected (Lane 1) or transiently transfected with the ELK1 gene (Lane 2) (Origene Technologies).

ELK1 Antibody (S383) - Background

ELK1 is a member of the Ets family of transcription factors and of the ternary complex factor (TCF) subfamily. Proteins of the TCF subfamily form a ternary complex by binding to the the serum response factor and the serum response element in the promoter of the c-fos proto-oncogene. The protein is a nuclear target for the ras-raf-MAPK signaling cascade.

ELK1 Antibody (S383) - References

Salinas, S., et al., J. Cell Biol. 165(6):767-773 (2004).
Yang, S.H., et al., Mol. Cell 12(1):63-74 (2003).
Bebien, M., et al., Oncogene 22(12):1836-1847 (2003).
Sharrocks, A.D., Biochem. Soc. Trans. 30(2):1-9 (2002).
Murai, K., et al., Mol. Cell. Biol. 22(20):7083-7092 (2002).