

**Cdc25A Antibody (S78)**  
**Affinity Purified Rabbit Polyclonal Antibody (Pab)**  
**Catalog # AP6272d**

**Specification**

---

**Cdc25A Antibody (S78) - Product Information**

Application	WB,E
Primary Accession	<a href="#">P30304</a>
Other Accession	<a href="#">P48965</a> , <a href="#">P48964</a> , <a href="#">A7MBD1</a>
Reactivity	Human
Predicted	Bovine, Mouse, Rat
Host	Rabbit
Clonality	Polyclonal
Isotype	Rabbit IgG
Calculated MW	59087
Antigen Region	57-84

**Cdc25A Antibody (S78) - Additional Information**

**Gene ID** 993

**Other Names**

M-phase inducer phosphatase 1, Dual specificity phosphatase Cdc25A, CDC25A

**Target/Specificity**

This Cdc25A antibody is generated from rabbits immunized with a KLH conjugated synthetic peptide between 57-84 amino acids from human Cdc25A.

**Dilution**

WB~~1:1000

**Format**

Purified polyclonal antibody supplied in PBS with 0.09% (W/V) sodium azide. This antibody is purified through a protein A column, followed by peptide affinity purification.

**Storage**

Maintain refrigerated at 2-8°C for up to 2 weeks. For long term storage store at -20°C in small aliquots to prevent freeze-thaw cycles.

**Precautions**

Cdc25A Antibody (S78) is for research use only and not for use in diagnostic or therapeutic procedures.

**Cdc25A Antibody (S78) - Protein Information**

**Name** CDC25A

**Function** Tyrosine protein phosphatase which functions as a dosage- dependent inducer of mitotic

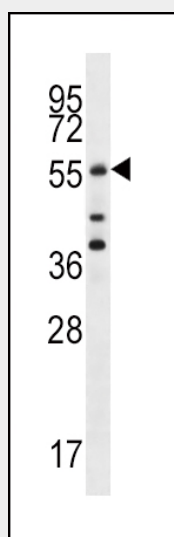
progression (PubMed:[12676925](#), PubMed:[14559997](#), PubMed:[1836978](#), PubMed:[20360007](#)). Directly dephosphorylates CDK1 and stimulates its kinase activity (PubMed:[20360007](#)). Also dephosphorylates CDK2 in complex with cyclin-E, in vitro (PubMed:[20360007](#)).

### Cdc25A Antibody (S78) - Protocols

Provided below are standard protocols that you may find useful for product applications.

- [Western Blot](#)
- [Blocking Peptides](#)
- [Dot Blot](#)
- [Immunohistochemistry](#)
- [Immunofluorescence](#)
- [Immunoprecipitation](#)
- [Flow Cytometry](#)
- [Cell Culture](#)

### Cdc25A Antibody (S78) - Images



Cdc25A Antibody (S78) (Cat.#AP6272d) western blot analysis in MCF-7 cell line lysates (35ug/lane). This demonstrates the Cdc25A antibody detected the Cdc25A protein (arrow).

### Cdc25A Antibody (S78) - Background

CDC25A is a member of the CDC25 family of phosphatases. CDC25A is required for progression from G1 to the S phase of the cell cycle. It activates the cyclin-dependent kinase CDC2 by removing two phosphate groups. CDC25A is specifically degraded in response to DNA damage, which prevents cells with chromosomal abnormalities from progressing through cell division. CDC25A is an oncogene, although its exact role in oncogenesis has not been demonstrated.

### Cdc25A Antibody (S78) - References

- Ito, Y., et al., *Int. J. Mol. Med.* 13(3):431-435 (2004).  
Nemoto, K., et al., *Prostate* 58(1):95-102 (2004).  
Goloudina, A., et al., *Cell Cycle* 2(5):473-478 (2003).  
Chen, M.S., et al., *Mol. Cell. Biol.* 23(21):7488-7497 (2003).  
Chow, J.P., et al., *Mol. Biol. Cell* 14(10):3989-4002 (2003).