

**Cdc25A Antibody (Center)**  
**Affinity Purified Rabbit Polyclonal Antibody (Pab)**  
**Catalog # AP6272c**

**Specification**

---

**Cdc25A Antibody (Center) - Product Information**

Application	<b>WB, IHC-P,E</b>
Primary Accession	<a href="#">P30304</a>
Reactivity	<b>Human</b>
Host	<b>Rabbit</b>
Clonality	<b>Polyclonal</b>
Isotype	<b>Rabbit IgG</b>
Antigen Region	<b>271-300</b>

**Cdc25A Antibody (Center) - Additional Information**

**Gene ID** 993

**Other Names**

M-phase inducer phosphatase 1, Dual specificity phosphatase Cdc25A, CDC25A

**Target/Specificity**

This Cdc25A antibody is generated from rabbits immunized with a KLH conjugated synthetic peptide between 271-300 amino acids from the Central region of human Cdc25A.

**Dilution**

WB~~1:2000  
IHC-P~~1:10~50

**Format**

Purified polyclonal antibody supplied in PBS with 0.09% (W/V) sodium azide. This antibody is purified through a protein A column, followed by peptide affinity purification.

**Storage**

Maintain refrigerated at 2-8°C for up to 2 weeks. For long term storage store at -20°C in small aliquots to prevent freeze-thaw cycles.

**Precautions**

Cdc25A Antibody (Center) is for research use only and not for use in diagnostic or therapeutic procedures.

**Cdc25A Antibody (Center) - Protein Information**

**Name** CDC25A

**Function** Tyrosine protein phosphatase which functions as a dosage- dependent inducer of mitotic progression (PubMed:[12676925](#), PubMed:[14559997](#), PubMed:[1836978](#), PubMed:[20360007](#)). Directly dephosphorylates CDK1 and stimulates its kinase activity (PubMed:[20360007](#)). Also

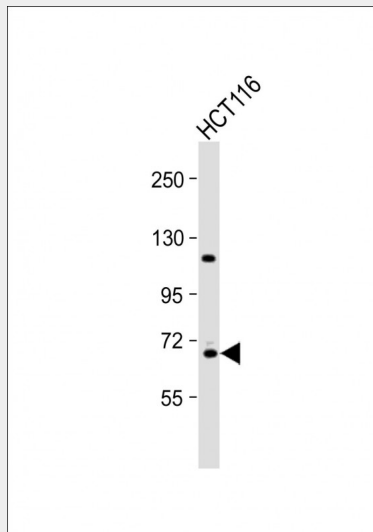
dephosphorylates CDK2 in complex with cyclin-E, in vitro (PubMed:[20360007](#)).

### Cdc25A Antibody (Center) - Protocols

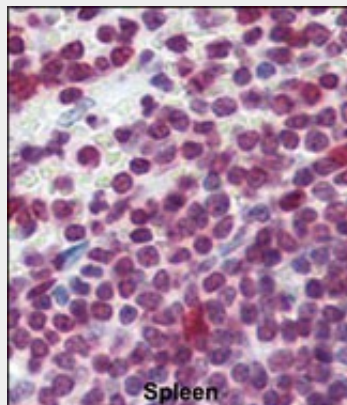
Provided below are standard protocols that you may find useful for product applications.

- [Western Blot](#)
- [Blocking Peptides](#)
- [Dot Blot](#)
- [Immunohistochemistry](#)
- [Immunofluorescence](#)
- [Immunoprecipitation](#)
- [Flow Cytometry](#)
- [Cell Culture](#)

### Cdc25A Antibody (Center) - Images



Anti-Cdc25A Antibody (Center) at 1:2000 dilution + HCT116 whole cell lysate Lysates/proteins at 20 µg per lane. Secondary Goat Anti-Rabbit IgG, (H+L), Peroxidase conjugated at 1/10000 dilution. Predicted band size : 59 kDa Blocking/Dilution buffer: 5% NFDM/TBST.



Formalin-fixed and paraffin-embedded human Spleen tissue reacted with Cdc25A Antibody (Center)(Cat.#AP6272c), which was peroxidase-conjugated to the secondary antibody, followed by AEC staining. This data demonstrates the use of this antibody for immunohistochemistry;

clinical relevance has not been evaluated.

### **Cdc25A Antibody (Center) - Background**

CDC25A is a member of the CDC25 family of phosphatases. CDC25A is required for progression from G1 to the S phase of the cell cycle. It activates the cyclin-dependent kinase CDC2 by removing two phosphate groups. CDC25A is specifically degraded in response to DNA damage, which prevents cells with chromosomal abnormalities from progressing through cell division. CDC25A is an oncogene, although its exact role in oncogenesis has not been demonstrated.

### **Cdc25A Antibody (Center) - References**

Ito, Y., et al., *Int. J. Mol. Med.* 13(3):431-435 (2004).  
Nemoto, K., et al., *Prostate* 58(1):95-102 (2004).  
Goloudina, A., et al., *Cell Cycle* 2(5):473-478 (2003).  
Chen, M.S., et al., *Mol. Cell. Biol.* 23(21):7488-7497 (2003).  
Chow, J.P., et al., *Mol. Biol. Cell* 14(10):3989-4002 (2003).

### **Cdc25A Antibody (Center) - Citations**

- [A novel recurrent CHEK2 Y390C mutation identified in high-risk Chinese breast cancer patients impairs its activity and is associated with increased breast cancer risk.](#)