

**MMP8 Antibody (Center)**  
**Purified Rabbit Polyclonal Antibody (Pab)**  
**Catalog # AP6213a****Specification**

---

**MMP8 Antibody (Center) - Product Information**

Application	<b>WB, IHC-P,E</b>
Primary Accession	<a href="#">P22894</a>
Other Accession	<a href="#">NP_002415</a>
Reactivity	<b>Human, Mouse</b>
Host	<b>Rabbit</b>
Clonality	<b>Polyclonal</b>
Isotype	<b>Rabbit IgG</b>
Calculated MW	<b>53412</b>
Antigen Region	<b>286-315</b>

**MMP8 Antibody (Center) - Additional Information****Gene ID** 4317**Other Names**

Neutrophil collagenase, Matrix metalloproteinase-8, MMP-8, PMNL collagenase, PMNL-CL, MMP8, CLG1

**Target/Specificity**

This MMP8 antibody is generated from rabbits immunized with a KLH conjugated synthetic peptide between 286-315 amino acids from the Central region of human MMP8.

**Dilution**WB~~1:1000  
IHC-P~~1:50~100**Format**

Purified polyclonal antibody supplied in PBS with 0.09% (W/V) sodium azide. This antibody is prepared by Saturated Ammonium Sulfate (SAS) precipitation followed by dialysis against PBS.

**Storage**

Maintain refrigerated at 2-8°C for up to 2 weeks. For long term storage store at -20°C in small aliquots to prevent freeze-thaw cycles.

**Precautions**

MMP8 Antibody (Center) is for research use only and not for use in diagnostic or therapeutic procedures.

**MMP8 Antibody (Center) - Protein Information****Name** MMP8

### Synonyms CLG1

**Function** Can degrade fibrillar type I, II, and III collagens.

### Cellular Location

Cytoplasmic granule. Secreted, extracellular space, extracellular matrix. Note=Stored in intracellular granules

### Tissue Location

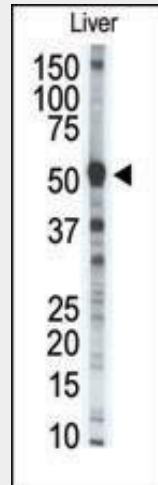
Neutrophils.

## MMP8 Antibody (Center) - Protocols

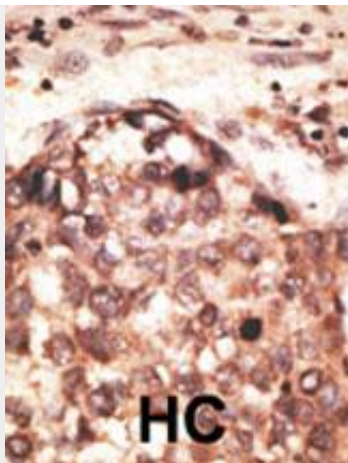
Provided below are standard protocols that you may find useful for product applications.

- [Western Blot](#)
- [Blocking Peptides](#)
- [Dot Blot](#)
- [Immunohistochemistry](#)
- [Immunofluorescence](#)
- [Immunoprecipitation](#)
- [Flow Cytometry](#)
- [Cell Culture](#)

## MMP8 Antibody (Center) - Images



Western blot analysis of anti-MMP8 Pab (Cat. #AP6213a) in mouse liver tissue lysate (35ug/lane). MMP8 (arrow) was detected using the purified Pab



Formalin-fixed and paraffin-embedded human cancer tissue reacted with the primary antibody, which was peroxidase-conjugated to the secondary antibody, followed by AEC staining. This data demonstrates the use of this antibody for immunohistochemistry; clinical relevance has not been evaluated. BC = breast carcinoma; HC = hepatocarcinoma.

#### **MMP8 Antibody (Center) - Background**

Proteins of the matrix metalloproteinase (MMP) family are involved in the breakdown of extracellular matrix in normal physiological processes, such as embryonic development, reproduction, and tissue remodeling, as well as in disease processes, such as arthritis and metastasis. Most MMPs are secreted as inactive proproteins which are activated when cleaved by extracellular proteinases. However, MMP8 is stored in secondary granules within neutrophils and is activated by autolytic cleavage. Its function is degradation of type I, II and III collagens. The gene is part of a cluster of MMP genes which localize to chromosome 11q22.3.

#### **MMP8 Antibody (Center) - References**

Van den Steen, P.E., et al., *Biochem. Biophys. Res. Commun.* 310(3):889-896 (2003).  
Giambernardi, T.A., et al., *Matrix Biol.* 20(8):577-587 (2001). Nagase, H., et al., *J. Biol. Chem.* 274(31):21491-21494 (1999). Massova, I., et al., *FASEB J.* 12(12):1075-1095 (1998). Pendas, A.M., et al., *Genomics* 37(2):266-268 (1996).