

**MMP11 Antibody (C-term)**  
**Purified Rabbit Polyclonal Antibody (Pab)**  
**Catalog # AP6195a**

**Specification**

---

**MMP11 Antibody (C-term) - Product Information**

Application	WB,E
Primary Accession	<a href="#">P24347</a>
Other Accession	<a href="#">NP_005931</a>
Reactivity	Human, Mouse
Host	Rabbit
Clonality	Polyclonal
Isotype	Rabbit IgG
Calculated MW	54590
Antigen Region	398-426

**MMP11 Antibody (C-term) - Additional Information**

**Gene ID** 4320

**Other Names**

Stromelysin-3, SL-3, ST3, 3424-, Matrix metalloproteinase-11, MMP-11, MMP11, STMY3

**Target/Specificity**

This MMP11 antibody is generated from rabbits immunized with a KLH conjugated synthetic peptide between 398-426 amino acids from the C-terminal region of human MMP11.

**Dilution**

WB~~1:1000

**Format**

Purified polyclonal antibody supplied in PBS with 0.09% (W/V) sodium azide. This antibody is prepared by Saturated Ammonium Sulfate (SAS) precipitation followed by dialysis against PBS.

**Storage**

Maintain refrigerated at 2-8°C for up to 2 weeks. For long term storage store at -20°C in small aliquots to prevent freeze-thaw cycles.

**Precautions**

MMP11 Antibody (C-term) is for research use only and not for use in diagnostic or therapeutic procedures.

**MMP11 Antibody (C-term) - Protein Information**

**Name** MMP11

**Synonyms** STMY3

**Function** May play an important role in the progression of epithelial malignancies.

**Cellular Location**

Secreted, extracellular space, extracellular matrix

**Tissue Location**

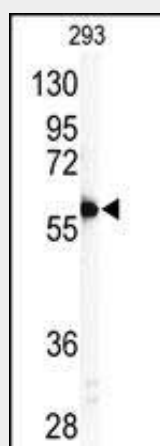
Specifically expressed in stromal cells of breast carcinomas

**MMP11 Antibody (C-term) - Protocols**

Provided below are standard protocols that you may find useful for product applications.

- [Western Blot](#)
- [Blocking Peptides](#)
- [Dot Blot](#)
- [Immunohistochemistry](#)
- [Immunofluorescence](#)
- [Immunoprecipitation](#)
- [Flow Cytometry](#)
- [Cell Culture](#)

**MMP11 Antibody (C-term) - Images**



Western blot analysis of anti-MMP11 Antibody (C-term)(Cat.#AP6195a) in 293 cell line lysates (35ug/lane). MMP11(arrow) was detected using the purified Pab.

**MMP11 Antibody (C-term) - Background**

Proteins of the matrix metalloproteinase (MMP) family are involved in the breakdown of extracellular matrix in normal physiological processes, such as embryonic development, reproduction, and tissue remodeling, as well as in disease processes, such as arthritis and metastasis. Most MMPs are secreted as inactive proproteins which are activated when cleaved by extracellular proteinases. MMP11 may play an important role in the progression of epithelial malignancies. It is specifically expressed in stromal cells of breast carcinomas.

**MMP11 Antibody (C-term) - References**

Anglard, P., et al., J. Biol. Chem. 270(35):20337-20344 (1995).  
Basset, P., et al., Nature 348(6303):699-704 (1990).