

**MAGEH1 Antibody (C-term)**  
**Purified Rabbit Polyclonal Antibody (Pab)**  
**Catalog # AP6180a**

**Specification**

---

**MAGEH1 Antibody (C-term) - Product Information**

Application	<b>WB, IHC-P,E</b>
Primary Accession	<a href="#">O9H213</a>
Other Accession	<a href="#">O9NWG9</a>
Reactivity	<b>Human</b>
Predicted	<b>Mouse</b>
Host	<b>Rabbit</b>
Clonality	<b>Polyclonal</b>
Isotype	<b>Rabbit IgG</b>
Antigen Region	<b>186-218</b>

**MAGEH1 Antibody (C-term) - Additional Information**

**Gene ID** 28986

**Other Names**

Melanoma-associated antigen H1, Apoptosis-related protein 1, APR-1, MAGE-H1 antigen, Restin, MAGEH1, APR1

**Target/Specificity**

This MAGEH1 antibody is generated from rabbits immunized with a KLH conjugated synthetic peptide between 186-218 amino acids from the C-terminal region of human MAGEH1.

**Dilution**

WB~~1:1000  
IHC-P~~1:50~100

**Format**

Purified polyclonal antibody supplied in PBS with 0.09% (W/V) sodium azide. This antibody is prepared by Saturated Ammonium Sulfate (SAS) precipitation followed by dialysis against PBS.

**Storage**

Maintain refrigerated at 2-8°C for up to 2 weeks. For long term storage store at -20°C in small aliquots to prevent freeze-thaw cycles.

**Precautions**

MAGEH1 Antibody (C-term) is for research use only and not for use in diagnostic or therapeutic procedures.

**MAGEH1 Antibody (C-term) - Protein Information**

**Name** MAGEH1

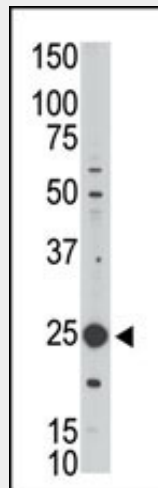
## Synonyms APR1

## MAGEH1 Antibody (C-term) - Protocols

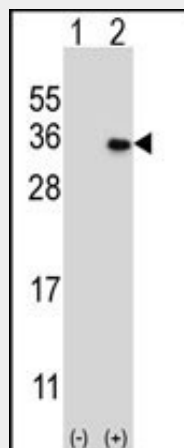
Provided below are standard protocols that you may find useful for product applications.

- [Western Blot](#)
- [Blocking Peptides](#)
- [Dot Blot](#)
- [Immunohistochemistry](#)
- [Immunofluorescence](#)
- [Immunoprecipitation](#)
- [Flow Cytometry](#)
- [Cell Culture](#)

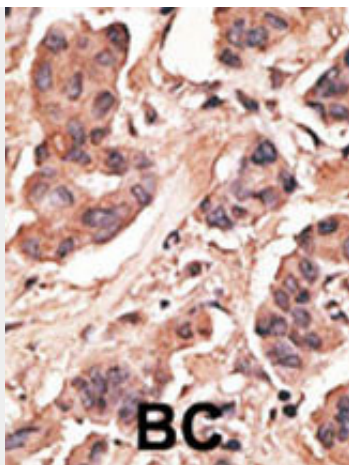
## MAGEH1 Antibody (C-term) - Images



The anti-MAGEH1 Pab (Cat. #AP6180a) is used in Western blot to detect MAGEH1 in Jurkat cell lysate.



Western blot analysis of MAGEH1 (arrow) using rabbit polyclonal MAGEH1 Antibody (D201) (Cat. #AP6180a). 293 cell lysates (2 ug/lane) either nontransfected (Lane 1) or transiently transfected (Lane 2) with the MAGEH1 gene.



Formalin-fixed and paraffin-embedded human cancer tissue reacted with the primary antibody, which was peroxidase-conjugated to the secondary antibody, followed by DAB staining. This data demonstrates the use of this antibody for immunohistochemistry; clinical relevance has not been evaluated. BC = breast carcinoma; HC = hepatocarcinoma.

#### **MAGEH1 Antibody (C-term) - Background**

Melanoma-associated antigen (MAGE) are completely silent in normal tissues, with the exception of male germ cells, and, for some of them, placenta. These antigens ought to be strictly tumor specific, expressed in tumor cells of various histological types. Because of their specific expression on tumor cells, these antigens are of particular interest for antitumor immunotherapy. Genes of the MAGE family direct the expression of tumor antigens that are recognized on a human melanoma by autologous cytolytic T lymphocytes. Though the function of MAGEH1 is not fully elucidated, it may play a role in embryonal development and tumor transformation or aspects of tumor progression.

#### **MAGEH1 Antibody (C-term) - References**

Chomez, P., et al., *Cancer Res.* 61(14):5544-5551 (2001).  
Zhu, F., et al., *BioTechniques* 29(2):310-313 (2000).