

**MAGEB2 Antibody (N-term)**  
**Purified Rabbit Polyclonal Antibody (Pab)**  
**Catalog # AP6172a**

**Specification**

---

**MAGEB2 Antibody (N-term) - Product Information**

Application	<b>WB, IHC-P,E</b>
Primary Accession	<a href="#">O15479</a>
Other Accession	<a href="#">NP_002355</a>
Reactivity	<b>Human</b>
Host	<b>Rabbit</b>
Clonality	<b>Polyclonal</b>
Isotype	<b>Rabbit IgG</b>
Calculated MW	<b>35277</b>
Antigen Region	<b>4-33</b>

**MAGEB2 Antibody (N-term) - Additional Information**

**Gene ID** 4113

**Other Names**

Melanoma-associated antigen B2, Cancer/testis antigen 32, CT32, DSS-AHC critical interval MAGE superfamily 6, DAM6, MAGE XP-2 antigen, MAGE-B2 antigen, MAGEB2

**Target/Specificity**

This MAGEB2 antibody is generated from rabbits immunized with a KLH conjugated synthetic peptide between 4-33 amino acids from the N-terminal region of human MAGEB2.

**Dilution**

WB~~1:1000  
IHC-P~~1:50~100

**Format**

Purified polyclonal antibody supplied in PBS with 0.09% (W/V) sodium azide. This antibody is prepared by Saturated Ammonium Sulfate (SAS) precipitation followed by dialysis against PBS.

**Storage**

Maintain refrigerated at 2-8°C for up to 2 weeks. For long term storage store at -20°C in small aliquots to prevent freeze-thaw cycles.

**Precautions**

MAGEB2 Antibody (N-term) is for research use only and not for use in diagnostic or therapeutic procedures.

**MAGEB2 Antibody (N-term) - Protein Information**

**Name** MAGEB2

**Function** May enhance ubiquitin ligase activity of RING-type zinc finger-containing E3 ubiquitin-protein ligases. Proposed to act through recruitment and/or stabilization of the Ubl-conjugating enzyme (E2) at the E3:substrate complex.

**Tissue Location**

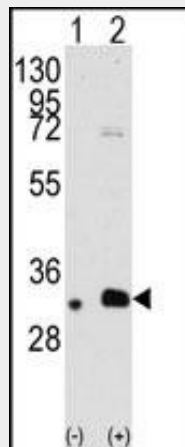
Expressed in testis and placenta, and in a significant fraction of tumors of various histologic types

**MAGEB2 Antibody (N-term) - Protocols**

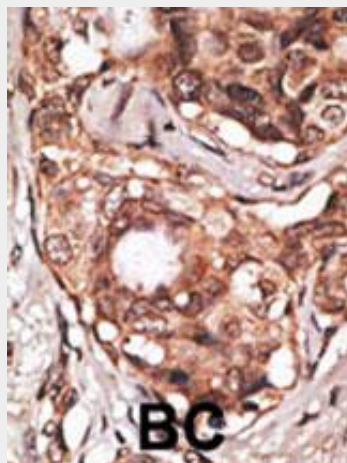
Provided below are standard protocols that you may find useful for product applications.

- [Western Blot](#)
- [Blocking Peptides](#)
- [Dot Blot](#)
- [Immunohistochemistry](#)
- [Immunofluorescence](#)
- [Immunoprecipitation](#)
- [Flow Cytometry](#)
- [Cell Culture](#)

**MAGEB2 Antibody (N-term) - Images**



Western blot analysis of MAGEB2 (arrow) using rabbit polyclonal MAGEB2 Antibody (Cat.#AP6172a). 293 cell lysates (2 ug/lane) either nontransfected (Lane 1) or transiently transfected with the MAGEB2 gene (Lane 2)(Origene Technologies).



Formalin-fixed and paraffin-embedded human cancer tissue reacted with the primary antibody, which was peroxidase-conjugated to the secondary antibody, followed by DAB staining. This data demonstrates the use of this antibody for immunohistochemistry; clinical relevance has not been evaluated. BC = breast carcinoma; HC = hepatocarcinoma.

#### **MAGEB2 Antibody (N-term) - Background**

MAGEB2 is a member of the MAGEB gene family. The members of this family have their entire coding sequences located in the last exon, and the encoded proteins show 50 to 68% sequence identity to each other. The promoters and first exons of the MAGEB genes show considerable variability, suggesting that the existence of this gene family enables the same function to be expressed under different transcriptional controls. This gene is localized in the DSS (dosage-sensitive sex reversal) critical region. It is expressed in testis and placenta, and in a significant fraction of tumors of various histological types. The MAGEB genes are clustered on chromosome Xp22-p21.

#### **MAGEB2 Antibody (N-term) - References**

Park, J.H., et al., Mol. Cells 13(2):288-295 (2002).  
Lurquin, C., et al., Genomics 46(3):397-408 (1997).  
Dabovic, B., et al., Mamm. Genome 6(9):571-580 (1995).