

MAGEA4 Antibody (N-term)
Purified Rabbit Polyclonal Antibody (Pab)
Catalog # AP6166a**Specification**

MAGEA4 Antibody (N-term) - Product Information

Application	WB, IHC-P,E
Primary Accession	P43358
Reactivity	Human
Host	Rabbit
Clonality	Polyclonal
Isotype	Rabbit IgG
Antigen Region	9-38

MAGEA4 Antibody (N-term) - Additional Information**Gene ID** 4103**Other Names**

Melanoma-associated antigen 4, Cancer/testis antigen 14, CT14, MAGE-4 antigen, MAGE-41 antigen, MAGE-X2 antigen, MAGEA4, MAGE4

Target/Specificity

This MAGEA4 antibody is generated from rabbits immunized with a KLH conjugated synthetic peptide between 9-38 amino acids from the N-terminal region of human MAGEA4.

Dilution

WB~~1:1000
IHC-P~~1:50~100

Format

Purified polyclonal antibody supplied in PBS with 0.09% (W/V) sodium azide. This antibody is prepared by Saturated Ammonium Sulfate (SAS) precipitation followed by dialysis against PBS.

Storage

Maintain refrigerated at 2-8°C for up to 2 weeks. For long term storage store at -20°C in small aliquots to prevent freeze-thaw cycles.

Precautions

MAGEA4 Antibody (N-term) is for research use only and not for use in diagnostic or therapeutic procedures.

MAGEA4 Antibody (N-term) - Protein Information**Name** MAGEA4**Synonyms** MAGE4

Function Regulates cell proliferation through the inhibition of cell cycle arrest at the G1 phase (PubMed:[22842486](#)). Also negatively regulates p53-mediated apoptosis (PubMed:[22842486](#)).

Tissue Location

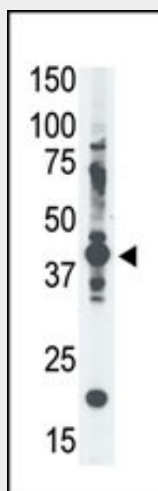
Expressed in many tumors of several types, such as melanoma, head and neck squamous cell carcinoma, lung carcinoma and breast carcinoma, but not in normal tissues except for testes and placenta

MAGEA4 Antibody (N-term) - Protocols

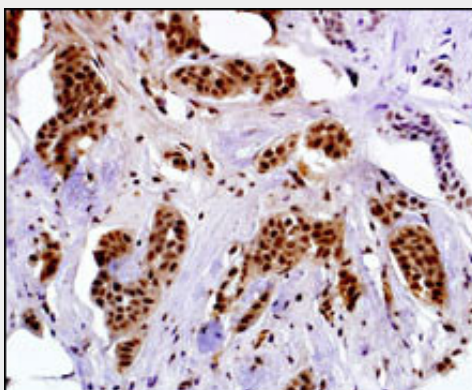
Provided below are standard protocols that you may find useful for product applications.

- [Western Blot](#)
- [Blocking Peptides](#)
- [Dot Blot](#)
- [Immunohistochemistry](#)
- [Immunofluorescence](#)
- [Immunoprecipitation](#)
- [Flow Cytometry](#)
- [Cell Culture](#)

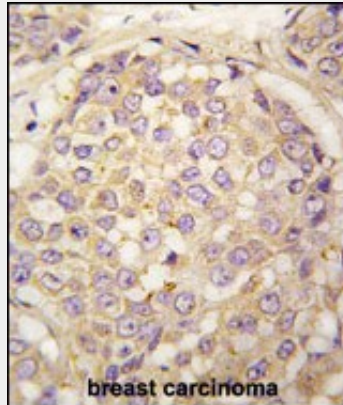
MAGEA4 Antibody (N-term) - Images



The anti-MAGE-A4 Pab (Cat. #AP6166a) is used in Western blot to detect MAGE-A4 in A375 cell lysate.



Immunostaining of paraformaldehyde-fixed and paraffin-embedded human breast carcinoma with MAGE-A4 antibody Cat# AP6166a (1:50 dilution), followed by reacting with biotin-conjugated secondary antibody, ABC solution and developing with DAB. Cancerous cells show nuclear staining of MAGE-A4. Magnification: 40X. Data courtesy of Dr. Mi Hou, Karolinska Institutet and University Hospital, Sweden.



Formalin-fixed and paraffin-embedded human breast carcinoma tissue reacted with MAGEA4 antibody (N-term) (Cat.#AP6166a), which was peroxidase-conjugated to the secondary antibody, followed by DAB staining. This data demonstrates the use of this antibody for immunohistochemistry; clinical relevance has not been evaluated.

MAGEA4 Antibody (N-term) - Background

MAGEA4 is a member of the MAGEA gene family. The members of this family encode proteins with 50 to 80% sequence identity to each other. The promoters and first exons of the MAGEA genes show considerable variability, suggesting that the existence of this gene family enables the same function to be expressed under different transcriptional controls. The MAGEA genes are clustered at chromosomal location Xq28. They have been implicated in some hereditary disorders, such as dyskeratosis congenita.

MAGEA4 Antibody (N-term) - References

Nagao, T., et al., J. Biol. Chem. 278(12):10668-10674 (2003).
Resnick, M.B., et al., Int. J. Cancer 101(2):190-195 (2002).
Imai, Y., et al., Gene 160(2):287-290 (1995).
Rogner, U.C., et al., Genomics 29(3):725-731 (1995).
De Plaen, E., et al., Immunogenetics 40(5):360-369 (1994).

MAGEA4 Antibody (N-term) - Citations

- [Quantitative Analysis of Differential Proteome Expression in Bladder Cancer vs. Normal Bladder Cells Using SILAC Method.](#)