

**MAGEA12 Antibody (N-term)**  
**Affinity Purified Rabbit Polyclonal Antibody (Pab)**  
**Catalog # AP6162a**

**Specification**

---

**MAGEA12 Antibody (N-term) - Product Information**

Application	WB, IHC-P,E
Primary Accession	<a href="#">P43365</a>
Other Accession	<a href="#">NP_005358</a>
Reactivity	Human
Host	Rabbit
Clonality	Polyclonal
Isotype	Rabbit IgG
Calculated MW	34836
Antigen Region	81-108

**MAGEA12 Antibody (N-term) - Additional Information**

**Gene ID** 4111

**Other Names**

Melanoma-associated antigen 12, Cancer/testis antigen 112, CT112, MAGE-12 antigen, MAGE12F antigen, MAGEA12, MAGE12

**Target/Specificity**

This MAGEA12 antibody is generated from rabbits immunized with a KLH conjugated synthetic peptide between 81-108 amino acids from the N-terminal region of human MAGEA12.

**Dilution**

WB~~1:1000  
IHC-P~~1:10~50

**Format**

Purified polyclonal antibody supplied in PBS with 0.09% (W/V) sodium azide. This antibody is purified through a protein A column, followed by peptide affinity purification.

**Storage**

Maintain refrigerated at 2-8°C for up to 2 weeks. For long term storage store at -20°C in small aliquots to prevent freeze-thaw cycles.

**Precautions**

MAGEA12 Antibody (N-term) is for research use only and not for use in diagnostic or therapeutic procedures.

**MAGEA12 Antibody (N-term) - Protein Information**

**Name** MAGEA12

## Synonyms MAGE12

**Function** Not known, though may play a role tumor transformation or progression. In vitro promotes cell viability in melanoma cell lines.

## Tissue Location

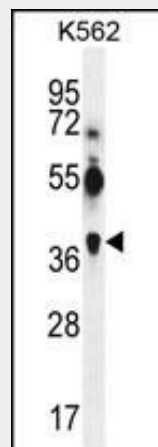
Expressed in many tumors of several types, such as melanoma, head and neck squamous cell carcinoma, lung carcinoma and breast carcinoma, but not in normal tissues except for testes

## MAGEA12 Antibody (N-term) - Protocols

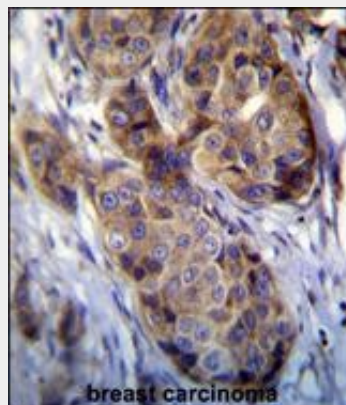
Provided below are standard protocols that you may find useful for product applications.

- [Western Blot](#)
- [Blocking Peptides](#)
- [Dot Blot](#)
- [Immunohistochemistry](#)
- [Immunofluorescence](#)
- [Immunoprecipitation](#)
- [Flow Cytometry](#)
- [Cell Culture](#)

## MAGEA12 Antibody (N-term) - Images



MAGEA12 Antibody (S96) (Cat. #AP6162a) western blot analysis in K562 cell line lysates (35ug/lane). This demonstrates the MAGEA12 antibody detected the MAGEA12 protein (arrow).



MAGEA12 antibody (N-term) (Cat. #AP6162a) immunohistochemistry analysis in formalin fixed and paraffin embedded human breast carcinoma followed by peroxidase conjugation of the secondary antibody and DAB staining. This data demonstrates the use of MAGEA12 antibody (N-term) for immunohistochemistry. Clinical relevance has not been evaluated.

#### **MAGEA12 Antibody (N-term) - Background**

MAGEA12 is a member of the melanoma antigen gene (MAGE) family. The proteins of this family are tumor-specific antigens that can be recognized by autologous cytolytic T lymphocytes. This gene is expressed in various tumors and tumor cell lines from different tissue origins, but not detected in normal tissues, except testis. The function of this gene is unknown. This and other MAGE genes form a gene cluster at chromosome Xq28 region.

#### **MAGEA12 Antibody (N-term) - References**

- Mallon, A.M., et al., *Genome Res.* 10(6):758-775 (2000).  
Rogner, U.C., et al., *Genomics* 29(3):725-731 (1995).  
Ding, M., et al., *Biochem. Biophys. Res. Commun.* 202(1):549-555 (1994).  
De Smet, C., et al., *Immunogenetics* 39(2):121-129 (1994).  
De Plaen, E., et al., *Immunogenetics* 40(5):360-369 (1994).