

**Anti-Myoglobin Antibody**  
**Mouse monoclonal antibody to Myoglobin**  
**Catalog # AP61624**

**Specification**

---

**Anti-Myoglobin Antibody - Product Information**

Application	IF
Primary Accession	<a href="#">P02144</a>
Reactivity	Human
Host	Mouse
Clonality	Monoclonal
Calculated MW	17184

**Anti-Myoglobin Antibody - Additional Information**

**Gene ID** 4151

**Other Names**  
Myoglobin

**Target/Specificity**  
Recognizes endogenous levels of Myoglobin protein.

**Dilution**  
IF~~IH (1/100 - 1/300)

**Format**  
Mouse IgG. Liquid in PBS containing 50% glycerol, 0.2% BSA and 0.09% (W/V) sodium azide.

**Storage**  
Store at -20 °C. Stable for 12 months from date of receipt

**Anti-Myoglobin Antibody - Protein Information**

**Name** MB ([HGNC:6915](#))

**Function**  
Monomeric heme protein which primary function is to store oxygen and facilitate its diffusion within muscle tissues. Reversibly binds oxygen through a pentacoordinated heme iron and enables its timely and efficient release as needed during periods of heightened demand (PubMed:<a href="http://www.uniprot.org/citations/30918256" target="\_blank">30918256</a>, PubMed:<a href="http://www.uniprot.org/citations/34679218" target="\_blank">34679218</a>). Depending on the oxidative conditions of tissues and cells, and in addition to its ability to bind oxygen, it also has a nitrite reductase activity whereby it regulates the production of bioactive nitric oxide (PubMed:<a href="http://www.uniprot.org/citations/32891753" target="\_blank">32891753</a>). Under stress conditions, like hypoxia and anoxia, it also protects cells against reactive oxygen species thanks to its pseudoperoxidase activity (PubMed:<a href="http://www.uniprot.org/citations/34679218" target="\_blank">34679218</a>).

## Cellular Location

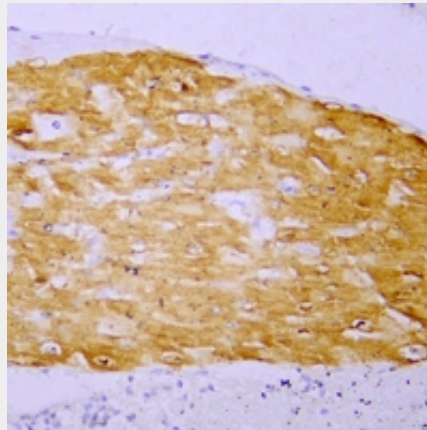
Cytoplasm, sarcoplasm

## Anti-Myoglobin Antibody - Protocols

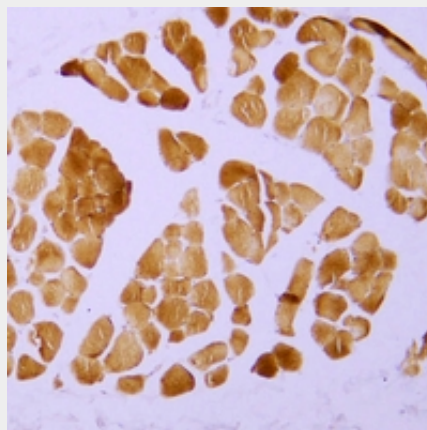
Provided below are standard protocols that you may find useful for product applications.

- [Western Blot](#)
- [Blocking Peptides](#)
- [Dot Blot](#)
- [Immunohistochemistry](#)
- [Immunofluorescence](#)
- [Immunoprecipitation](#)
- [Flow Cytometry](#)
- [Cell Culture](#)

## Anti-Myoglobin Antibody - Images



Immunohistochemical analysis of Myoglobin staining in human cardiac muscle formalin fixed paraffin embedded tissue section. The section was pre-treated using heat mediated antigen retrieval with sodium citrate buffer (pH 6.0). The section was then incubated with the antibody at room temperature and detected using an HRP conjugated compact polymer system. DAB was used as the chromogen. The section was then counterstained with haematoxylin and mounted with DPX.



Immunohistochemical analysis of Myoglobin staining in human skeletal muscle formalin fixed

paraffin embedded tissue section. The section was pre-treated using heat mediated antigen retrieval with sodium citrate buffer (pH 6.0). The section was then incubated with the antibody at room temperature and detected using an HRP conjugated compact polymer system. DAB was used as the chromogen. The section was then counterstained with haematoxylin and mounted with DPX.

#### **Anti-Myoglobin Antibody - Background**

KLH-conjugated synthetic peptide encompassing a sequence within human Myoglobin. The exact sequence is proprietary.