

Anti-Perforin 1 Antibody
Mouse monoclonal antibody to Perforin 1
Catalog # AP61623

Specification

Anti-Perforin 1 Antibody - Product Information

Application	IHC
Primary Accession	P14222
Reactivity	Human
Host	Mouse
Clonality	Monoclonal
Calculated MW	61377

Anti-Perforin 1 Antibody - Additional Information

Gene ID 5551

Other Names

PFP; Perforin-1; P1; Cytolysin; Lymphocyte pore-forming protein; PFP

Target/Specificity

Recognizes endogenous levels of Perforin 1 protein.

Format

Mouse IgG. Liquid in PBS containing 50% glycerol, 0.2% BSA and 0.09% (W/V) sodium azide.

Storage

Store at -20 °C. Stable for 12 months from date of receipt

Anti-Perforin 1 Antibody - Protein Information

Name PRF1

Synonyms PFP

Function

Pore-forming protein that plays a key role in granzyme- mediated programmed cell death, and in defense against virus-infected or neoplastic cells (PubMed:20889983, PubMed:21037563, PubMed:24558045, PubMed:9058810, PubMed:9164947). Plays an important role in killing other cells that are recognized as non-self by the immune system, e.g. in transplant rejection or some forms of autoimmune disease (PubMed:9058810). Can insert into the membrane of target cells in its calcium-bound form, oligomerize and form large pores (PubMed:20889983),

PubMed: 21037563). Promotes cytolysis and apoptosis of target cells by mediating the passage and uptake of cytotoxic granzymes (PubMed: 20038786, PubMed: 20225066, PubMed: 24558045, PubMed: 32299851). Facilitates the delivery of cationic cargo protein, while anionic or neural proteins are not delivered efficiently (PubMed: 24558045). Perforin pores allow the release of mature caspase-7 (CASP7) into the extracellular milieu (By similarity).

Cellular Location

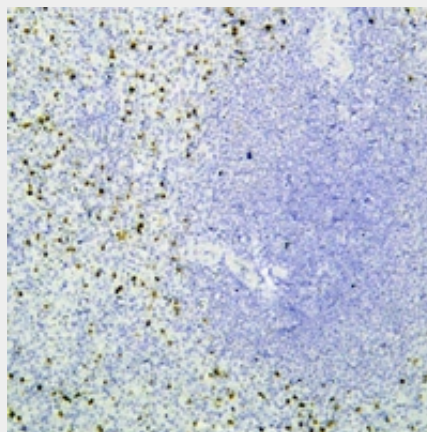
Cytolytic granule. Secreted. Cell membrane; Multi-pass membrane protein. Endosome lumen. Note=Stored in cytolytic granules of cytolytic T-lymphocytes and secreted into the cleft between T- lymphocyte and target cell (PubMed:20038786). Inserts into the cell membrane of target cells and forms pores (PubMed:20889983). Membrane insertion and pore formation requires a major conformation change (PubMed:20889983). May be taken up via endocytosis involving clathrin-coated vesicles and accumulate in a first time in large early endosomes (PubMed:20038786).

Anti-Perforin 1 Antibody - Protocols

Provided below are standard protocols that you may find useful for product applications.

- [Western Blot](#)
- [Blocking Peptides](#)
- [Dot Blot](#)
- [Immunohistochemistry](#)
- [Immunofluorescence](#)
- [Immunoprecipitation](#)
- [Flow Cytometry](#)
- [Cell Culture](#)

Anti-Perforin 1 Antibody - Images



Immunohistochemical analysis of Perforin 1 staining in human spleen formalin fixed paraffin embedded tissue section. The section was pre-treated using heat mediated antigen retrieval with sodium citrate buffer (pH 6.0). The section was then incubated with the antibody at room temperature and detected using an HRP conjugated compact polymer system. DAB was used as the chromogen. The section was then counterstained with haematoxylin and mounted with DPX.

Anti-Perforin 1 Antibody - Background

KLH-conjugated synthetic peptide encompassing a sequence within human Perforin 1. The exact sequence is proprietary.