

Anti-Tryptase alpha/beta Antibody
Mouse monoclonal antibody to Tryptase alpha/beta
Catalog # AP61618**Specification**

Anti-Tryptase alpha/beta Antibody - Product Information

| | |
|-------------------|------------------------|
| Application | IF, IP |
| Primary Accession | Q15661 |
| Reactivity | Human |
| Host | Mouse |
| Clonality | Monoclonal |
| Calculated MW | 30515 |

Anti-Tryptase alpha/beta Antibody - Additional Information**Gene ID** 7177**Other Names**

TPS1; TPS2; TPSB1; Tryptase alpha/beta-1; Tryptase-1; Tryptase I; Tryptase alpha-1

Target/Specificity

Recognizes endogenous levels of Tryptase alpha/beta protein.

Dilution

IF~~IH (1/100 - 1/300)

IP~~IH (1/100 - 1/300)

Format

Mouse IgG1. Liquid in PBS containing 50% glycerol, 0.2% BSA and 0.09% (W/V) sodium azide.

Storage

Store at -20 °C. Stable for 12 months from date of receipt

Anti-Tryptase alpha/beta Antibody - Protein Information**Name** TPSAB1**Synonyms** TPS1, TPS2, TPSB1**Function**

Tryptase is the major neutral protease present in mast cells and is secreted upon the coupled activation-degranulation response of this cell type. May play a role in innate immunity. Isoform 2 cleaves large substrates, such as fibronectin, more efficiently than isoform 1, but seems less efficient toward small substrates (PubMed:18854315).

Cellular Location

Secreted. Note=Released from the secretory granules upon mast cell activation.

Tissue Location

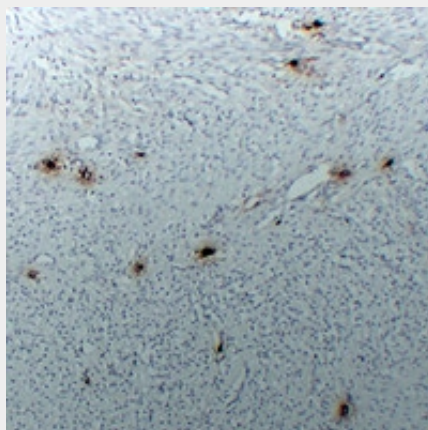
Isoform 1 and isoform 2 are expressed in lung, stomach, spleen, heart and skin; in these tissues, isoform 1 is predominant. Isoform 2 is expressed in aorta, spleen, and breast tumor, with highest levels in the endothelial cells of some blood vessels surrounding the aorta, as well as those surrounding the tumor and low levels, if any, in mast cells (at protein level)

Anti-Tryptase alpha/beta Antibody - Protocols

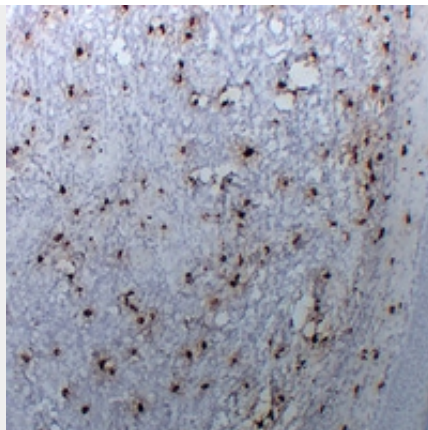
Provided below are standard protocols that you may find useful for product applications.

- [Western Blot](#)
- [Blocking Peptides](#)
- [Dot Blot](#)
- [Immunohistochemistry](#)
- [Immunofluorescence](#)
- [Immunoprecipitation](#)
- [Flow Cytometry](#)
- [Cell Culture](#)

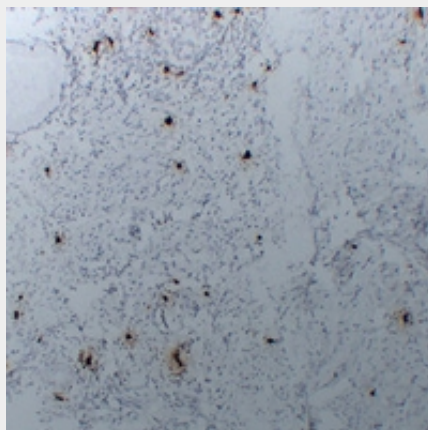
Anti-Tryptase alpha/beta Antibody - Images



Immunohistochemical analysis of Tryptase alpha/beta staining in human leiomyoma formalin fixed paraffin embedded tissue section. The section was pre-treated using heat mediated antigen retrieval with sodium citrate buffer (pH 6.0). The section was then incubated with the antibody at room temperature and detected using an HRP conjugated compact polymer system. DAB was used as the chromogen. The section was then counterstained with haematoxylin and mounted with DPX.



Immunohistochemical analysis of Tryptase alpha/beta staining in human tonsil formalin fixed paraffin embedded tissue section. The section was pre-treated using heat mediated antigen retrieval with sodium citrate buffer (pH 6.0). The section was then incubated with the antibody at room temperature and detected using an HRP conjugated compact polymer system. DAB was used as the chromogen. The section was then counterstained with haematoxylin and mounted with DPX.



Immunohistochemical analysis of Tryptase alpha/beta staining in human uterus formalin fixed paraffin embedded tissue section. The section was pre-treated using heat mediated antigen retrieval with sodium citrate buffer (pH 6.0). The section was then incubated with the antibody at room temperature and detected using an HRP conjugated compact polymer system. DAB was used as the chromogen. The section was then counterstained with haematoxylin and mounted with DPX.

Anti-Tryptase alpha/beta Antibody - Background

KLH-conjugated synthetic peptide encompassing a sequence within human Tryptase alpha/beta. The exact sequence is proprietary.