

**Anti-alpha Smooth Muscle Actin Antibody**  
Mouse monoclonal antibody to alpha Smooth Muscle Actin  
Catalog # AP61617

### Specification

---

#### Anti-alpha Smooth Muscle Actin Antibody - Product Information

Application	IF, IP, FC
Primary Accession	<a href="#">P62736</a>
Reactivity	Human
Host	Mouse
Clonality	Monoclonal
Calculated MW	42009

#### Anti-alpha Smooth Muscle Actin Antibody - Additional Information

**Gene ID** 59

#### Other Names

ACTSA; ACTVS; Actin aortic smooth muscle; Alpha-actin-2; Cell growth-inhibiting gene 46 protein

#### Target/Specificity

Recognizes endogenous levels of alpha Smooth Muscle Actin protein.

#### Dilution

IF~~IH (1/100 - 1/300)

IP~~IH (1/100 - 1/300)

FC~~IH (1/100 - 1/300)

#### Format

Mouse IgG2a. Liquid in PBS containing 50% glycerol, 0.2% BSA and 0.09% (W/V) sodium azide.

#### Storage

Store at -20 °C. Stable for 12 months from date of receipt

#### Anti-alpha Smooth Muscle Actin Antibody - Protein Information

**Name** ACTA2

**Synonyms** ACTSA, ACTVS

#### Function

Actins are highly conserved proteins that are involved in various types of cell motility and are ubiquitously expressed in all eukaryotic cells.

#### Cellular Location

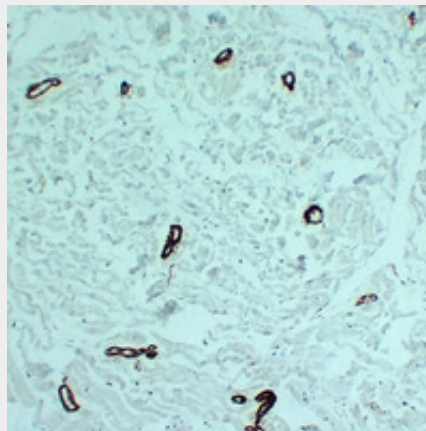
Cytoplasm, cytoskeleton.

## Anti-alpha Smooth Muscle Actin Antibody - Protocols

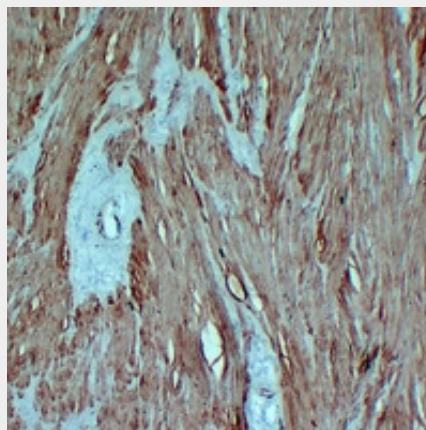
Provided below are standard protocols that you may find useful for product applications.

- [Western Blot](#)
- [Blocking Peptides](#)
- [Dot Blot](#)
- [Immunohistochemistry](#)
- [Immunofluorescence](#)
- [Immunoprecipitation](#)
- [Flow Cytometry](#)
- [Cell Culture](#)

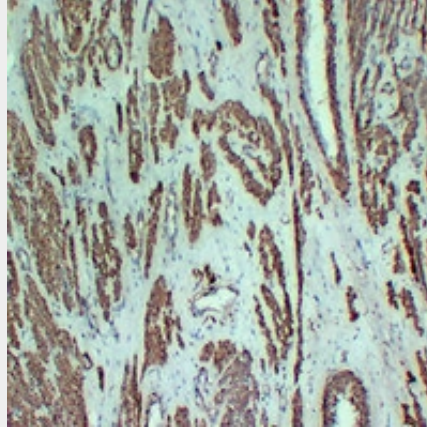
## Anti-alpha Smooth Muscle Actin Antibody - Images



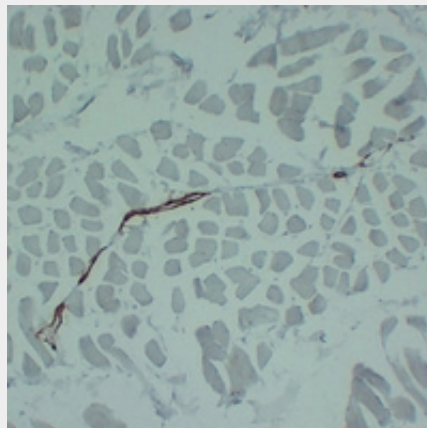
Immunohistochemical analysis of alpha Smooth Muscle Actin staining in human cardiac muscle formalin fixed paraffin embedded tissue section. The section was pre-treated using heat mediated antigen retrieval with sodium citrate buffer (pH 6.0). The section was then incubated with the antibody at room temperature and detected using an HRP conjugated compact polymer system. DAB was used as the chromogen. The section was then counterstained with haematoxylin and mounted with DPX.



Immunohistochemical analysis of alpha Smooth Muscle Actin staining in human colon formalin fixed paraffin embedded tissue section. The section was pre-treated using heat mediated antigen retrieval with sodium citrate buffer (pH 6.0). The section was then incubated with the antibody at room temperature and detected using an HRP conjugated compact polymer system. DAB was used as the chromogen. The section was then counterstained with haematoxylin and mounted with DPX.



Immunohistochemical analysis of alpha Smooth Muscle Actin staining in human leiomyoma formalin fixed paraffin embedded tissue section. The section was pre-treated using heat mediated antigen retrieval with sodium citrate buffer (pH 6.0). The section was then incubated with the antibody at room temperature and detected using an HRP conjugated compact polymer system. DAB was used as the chromogen. The section was then counterstained with haematoxylin and mounted with DPX.



Immunohistochemical analysis of alpha Smooth Muscle Actin staining in human skeletal muscle formalin fixed paraffin embedded tissue section. The section was pre-treated using heat mediated antigen retrieval with sodium citrate buffer (pH 6.0). The section was then incubated with the antibody at room temperature and detected using an HRP conjugated compact polymer system. DAB was used as the chromogen. The section was then counterstained with haematoxylin and mounted with DPX.

### **Anti-alpha Smooth Muscle Actin Antibody - Background**

KLH-conjugated synthetic peptide encompassing a sequence within human alpha Smooth Muscle Actin. The exact sequence is proprietary.