

Anti-Thyrotropin beta Antibody
Mouse monoclonal antibody to Thyrotropin beta
Catalog # AP61616

Specification

Anti-Thyrotropin beta Antibody - Product Information

Application	IHC
Primary Accession	P01222
Reactivity	Human
Host	Mouse
Clonality	Monoclonal
Calculated MW	15639

Anti-Thyrotropin beta Antibody - Additional Information

Gene ID 7252

Other Names

Thyrotropin subunit beta; Thyroid-stimulating hormone subunit beta; TSH-B; TSH-beta; Thyrotropin beta chain; Thyrotropin alfa

Target/Specificity

Recognizes endogenous levels of Thyrotropin beta protein.

Format

Mouse IgG1. Liquid in PBS containing 50% glycerol, 0.2% BSA and 0.09% (W/V) sodium azide.

Storage

Store at -20 °C. Stable for 12 months from date of receipt

Anti-Thyrotropin beta Antibody - Protein Information

Name TSHB

Function

Indispensable for the control of thyroid structure and metabolism.

Cellular Location

Secreted.

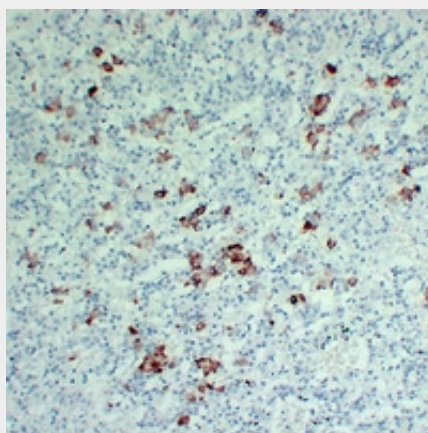
Anti-Thyrotropin beta Antibody - Protocols

Provided below are standard protocols that you may find useful for product applications.

- [Western Blot](#)
- [Blocking Peptides](#)

- [Dot Blot](#)
- [Immunohistochemistry](#)
- [Immunofluorescence](#)
- [Immunoprecipitation](#)
- [Flow Cytometry](#)
- [Cell Culture](#)

Anti-Thyrotropin beta Antibody - Images



Immunohistochemical analysis of Thyrotropin beta staining in human pituitary adenocarcinoma formalin fixed paraffin embedded tissue section. The section was pre-treated using heat mediated antigen retrieval with sodium citrate buffer (pH 6.0). The section was then incubated with the antibody at room temperature and detected using an HRP conjugated compact polymer system. DAB was used as the chromogen. The section was then counterstained with haematoxylin and mounted with DPX.

Anti-Thyrotropin beta Antibody - Background

KLH-conjugated synthetic peptide encompassing a sequence within human Thyrotropin beta. The exact sequence is proprietary.