

**Anti-TPSAB1 Antibody**  
Mouse monoclonal antibody to TPSAB1  
Catalog # AP61614**Specification**

---

**Anti-TPSAB1 Antibody - Product Information**

Application	IF, IP, FC, CHIP
Primary Accession	<a href="#">Q15661</a>
Reactivity	Human
Host	Mouse
Clonality	Monoclonal
Calculated MW	30515

**Anti-TPSAB1 Antibody - Additional Information****Gene ID** 7177**Other Names**

TPS1; TPS2; TPSB1; Tryptase alpha/beta-1; Tryptase-1; Tryptase I; Tryptase alpha-1

**Target/Specificity**

Recognizes endogenous levels of TPSAB1 protein.

**Dilution**

IF~~IH (1/100 - 1/300)

IP~~IH (1/100 - 1/300)

FC~~IH (1/100 - 1/300)

CHIP~~IH (1/100 - 1/300)

**Format**

Mouse IgG1. Liquid in PBS containing 50% glycerol, 0.2% BSA and 0.09% (W/V) sodium azide.

**Storage**

Store at -20 °C. Stable for 12 months from date of receipt

**Anti-TPSAB1 Antibody - Protein Information****Name** TPSAB1**Synonyms** TPS1, TPS2, TPSB1**Function**

Tryptase is the major neutral protease present in mast cells and is secreted upon the coupled activation-degranulation response of this cell type. May play a role in innate immunity. Isoform 2 cleaves large substrates, such as fibronectin, more efficiently than isoform 1, but seems less efficient toward small substrates (PubMed:<a href="http://www.uniprot.org/citations/18854315" target="\_blank">18854315</a>).

**Cellular Location**

Secreted. Note=Released from the secretory granules upon mast cell activation.

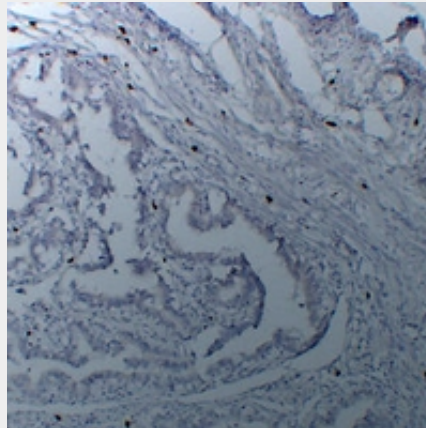
**Tissue Location**

Isoform 1 and isoform 2 are expressed in lung, stomach, spleen, heart and skin; in these tissues, isoform 1 is predominant. Isoform 2 is expressed in aorta, spleen, and breast tumor, with highest levels in the endothelial cells of some blood vessels surrounding the aorta, as well as those surrounding the tumor and low levels, if any, in mast cells (at protein level)

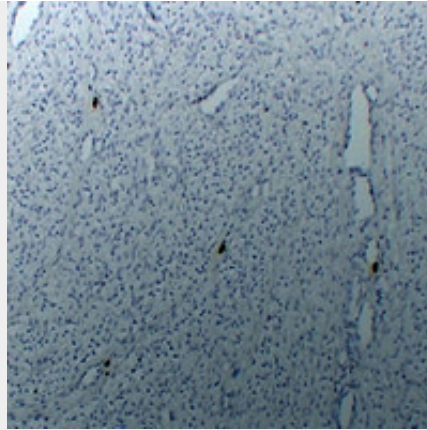
**Anti-TPSAB1 Antibody - Protocols**

Provided below are standard protocols that you may find useful for product applications.

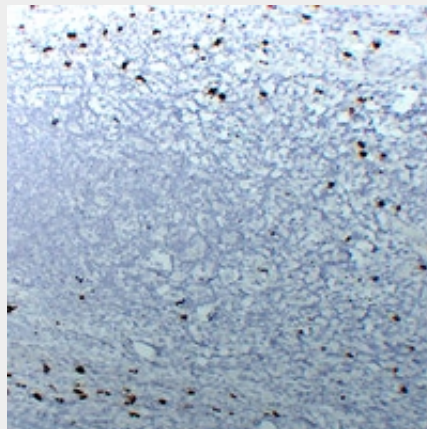
- [Western Blot](#)
- [Blocking Peptides](#)
- [Dot Blot](#)
- [Immunohistochemistry](#)
- [Immunofluorescence](#)
- [Immunoprecipitation](#)
- [Flow Cytometry](#)
- [Cell Culture](#)

**Anti-TPSAB1 Antibody - Images**

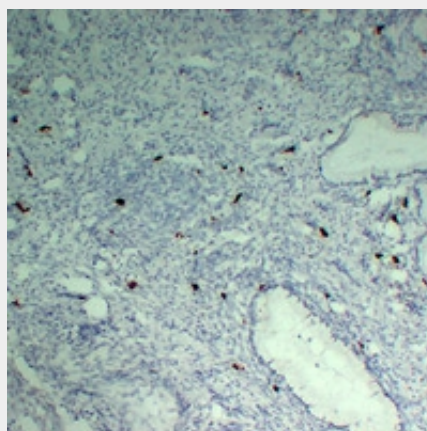
Immunohistochemical analysis of TPSAB1 staining in human fallopian tube formalin fixed paraffin embedded tissue section. The section was pre-treated using heat mediated antigen retrieval with sodium citrate buffer (pH 6.0). The section was then incubated with the antibody at room temperature and detected using an HRP conjugated compact polymer system. DAB was used as the chromogen. The section was then counterstained with haematoxylin and mounted with DPX.



Immunohistochemical analysis of TPSAB1 staining in human leiomyoma formalin fixed paraffin embedded tissue section. The section was pre-treated using heat mediated antigen retrieval with sodium citrate buffer (pH 6.0). The section was then incubated with the antibody at room temperature and detected using an HRP conjugated compact polymer system. DAB was used as the chromogen. The section was then counterstained with haematoxylin and mounted with DPX.

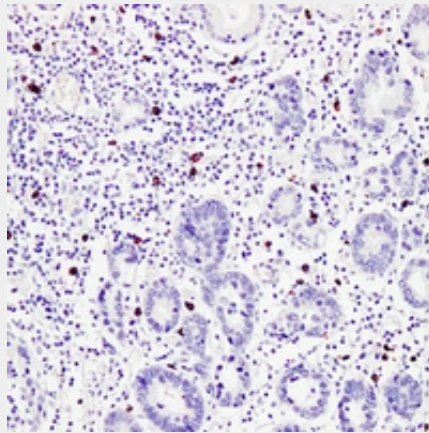


Immunohistochemical analysis of TPSAB1 staining in human tonsil formalin fixed paraffin embedded tissue section. The section was pre-treated using heat mediated antigen retrieval with sodium citrate buffer (pH 6.0). The section was then incubated with the antibody at room temperature and detected using an HRP conjugated compact polymer system. DAB was used as the chromogen. The section was then counterstained with haematoxylin and mounted with DPX.



Immunohistochemical analysis of TPSAB1 staining in human uterus formalin fixed paraffin embedded tissue section. The section was pre-treated using heat mediated antigen retrieval with sodium citrate buffer (pH 6.0). The section was then incubated with the antibody at room

temperature and detected using an HRP conjugated compact polymer system. DAB was used as the chromogen. The section was then counterstained with haematoxylin and mounted with DPX.



Immunohistochemical analysis of TPSAB1 staining in human stomach formalin fixed paraffin embedded tissue section. The section was pre-treated using heat mediated antigen retrieval with sodium citrate buffer (pH 6.0). The section was then incubated with the antibody at room temperature and detected using an HRP conjugated compact polymer system. DAB was used as the chromogen. The section was then counterstained with haematoxylin and mounted with DPX.

#### **Anti-TPSAB1 Antibody - Background**

KLH-conjugated synthetic peptide encompassing a sequence within human TPSAB1. The exact sequence is proprietary.