

Anti-Cytokeratin 15 Antibody
Mouse monoclonal antibody to Cytokeratin 15
Catalog # AP61607**Specification**

Anti-Cytokeratin 15 Antibody - Product Information

Application	IF, IP, FC
Primary Accession	P19012
Reactivity	Human
Host	Mouse
Clonality	Monoclonal
Calculated MW	49212

Anti-Cytokeratin 15 Antibody - Additional Information**Gene ID** 3866**Other Names**

KRTB; Keratin type I cytoskeletal 15; Cytokeratin-15; CK-15; Keratin-15; K15

Target/Specificity

Recognizes endogenous levels of Cytokeratin 15 protein.

DilutionIF~~WB (1/500 - 1/1000), IH (1/100 - 1/300)
IP~~WB (1/500 - 1/1000), IH (1/100 - 1/300)
FC~~WB (1/500 - 1/1000), IH (1/100 - 1/300)**Format**

Mouse IgG1. Liquid in PBS containing 50% glycerol, 0.2% BSA and 0.09% (W/V) sodium azide.

Storage

Store at -20 °C. Stable for 12 months from date of receipt

Anti-Cytokeratin 15 Antibody - Protein Information**Name** KRT15**Synonyms** KRTB**Tissue Location**

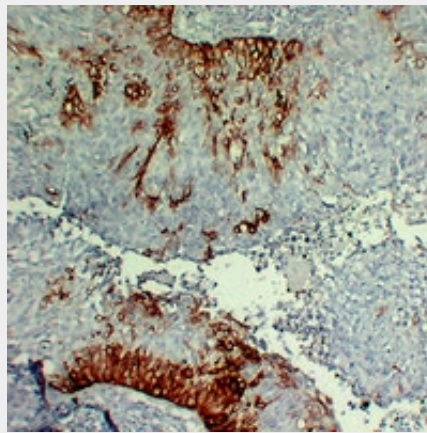
Expressed in a discontinuous manner in the basal cell layer of adult skin epidermis, but continuously in the basal layer of fetal skin epidermis and nail. Also expressed in the outer root sheath above the hair bulb in hair follicle (at protein level) Expressed homogeneously in all cell layers of the esophagus and exocervix, but detected in the basal cell layer only of oral mucosa, skin and in the basal plus the next two layers of the suprabasal epithelium of the palate.

Anti-Cytokeratin 15 Antibody - Protocols

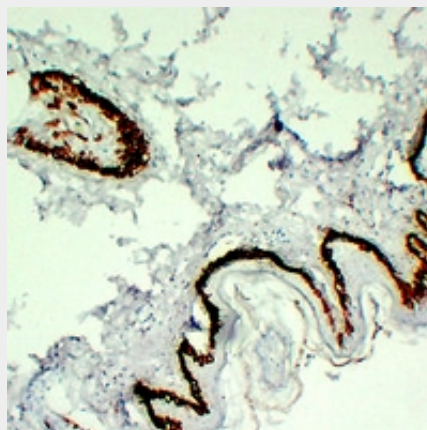
Provided below are standard protocols that you may find useful for product applications.

- [Western Blot](#)
- [Blocking Peptides](#)
- [Dot Blot](#)
- [Immunohistochemistry](#)
- [Immunofluorescence](#)
- [Immunoprecipitation](#)
- [Flow Cytometry](#)
- [Cell Culture](#)

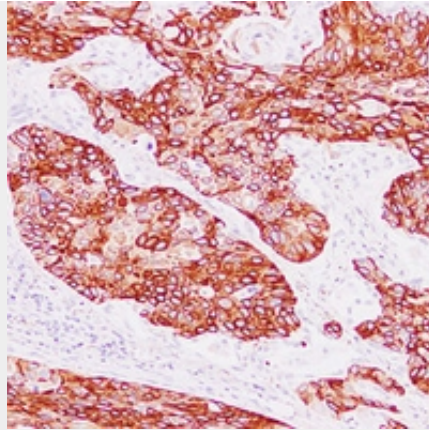
Anti-Cytokeratin 15 Antibody - Images



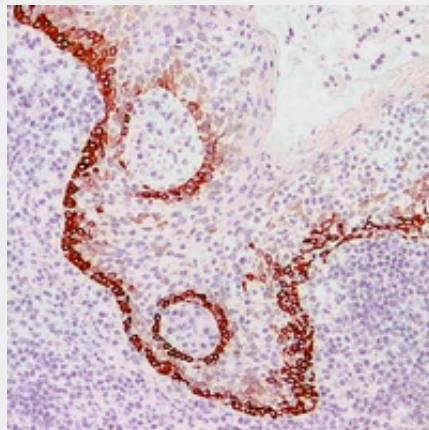
Immunohistochemical analysis of Cytokeratin 15 staining in human cervical squamous carcinoma formalin fixed paraffin embedded tissue section. The section was pre-treated using heat mediated antigen retrieval with sodium citrate buffer (pH 6.0). The section was then incubated with the antibody at room temperature and detected using an HRP conjugated compact polymer system. DAB was used as the chromogen. The section was then counterstained with haematoxylin and mounted with DPX.



Immunohistochemical analysis of Cytokeratin 15 staining in human skin formalin fixed paraffin embedded tissue section. The section was pre-treated using heat mediated antigen retrieval with sodium citrate buffer (pH 6.0). The section was then incubated with the antibody at room temperature and detected using an HRP conjugated compact polymer system. DAB was used as the chromogen. The section was then counterstained with haematoxylin and mounted with DPX.



Immunohistochemical analysis of Cytokeratin 15 staining in human squamous cell lung carcinoma formalin fixed paraffin embedded tissue section. The section was pre-treated using heat mediated antigen retrieval with sodium citrate buffer (pH 6.0). The section was then incubated with the antibody at room temperature and detected using an HRP conjugated compact polymer system. DAB was used as the chromogen. The section was then counterstained with haematoxylin and mounted with DPX.



Immunohistochemical analysis of Cytokeratin 15 staining in human tonsil formalin fixed paraffin embedded tissue section. The section was pre-treated using heat mediated antigen retrieval with sodium citrate buffer (pH 6.0). The section was then incubated with the antibody at room temperature and detected using an HRP conjugated compact polymer system. DAB was used as the chromogen. The section was then counterstained with haematoxylin and mounted with DPX.

Anti-Cytokeratin 15 Antibody - Background

KLH-conjugated synthetic peptide encompassing a sequence within human Cytokeratin 15. The exact sequence is proprietary.