

Anti-CD66e Antibody
Mouse monoclonal antibody to CD66e
Catalog # AP61606

Specification

Anti-CD66e Antibody - Product Information

Application	IF
Primary Accession	P06731
Reactivity	Human
Host	Mouse
Clonality	Monoclonal
Calculated MW	76796

Anti-CD66e Antibody - Additional Information

Gene ID 1048

Other Names

CEA; Carcinoembryonic antigen-related cell adhesion molecule 5; Carcinoembryonic antigen; CEA; Meconium antigen 100; CD66e

Target/Specificity

Recognizes endogenous levels of CD66e protein.

Dilution

IF~~IH (1/100 - 1/300)

Format

Mouse IgG2b. Liquid in PBS containing 50% glycerol, 0.2% BSA and 0.09% (W/V) sodium azide.

Storage

Store at -20 °C. Stable for 12 months from date of receipt

Anti-CD66e Antibody - Protein Information

Name CEACAM5 ([HGNC:1817](#))

Function

Cell surface glycoprotein that plays a role in cell adhesion, intracellular signaling and tumor progression (PubMed: [10864933](http://www.uniprot.org/citations/10864933), PubMed: [10910050](http://www.uniprot.org/citations/10910050), PubMed: [2803308](http://www.uniprot.org/citations/2803308)). Mediates homophilic and heterophilic cell adhesion with other carcinoembryonic antigen-related cell adhesion molecules, such as CEACAM6 (PubMed: [2803308](http://www.uniprot.org/citations/2803308)). Plays a role as an oncogene by promoting tumor progression; induces resistance to anoikis of colorectal carcinoma cells (PubMed: [10910050](http://www.uniprot.org/citations/10910050)).

Cellular Location

Cell membrane; Lipid-anchor, GPI-anchor. Apical cell membrane. Cell surface Note=Localized to the apical glycofocalyx surface

Tissue Location

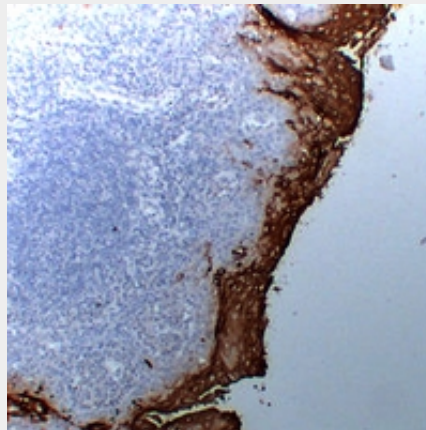
Expressed in columnar epithelial and goblet cells of the colon (at protein level) (PubMed:10436421). Found in adenocarcinomas of endodermally derived digestive system epithelium and fetal colon.

Anti-CD66e Antibody - Protocols

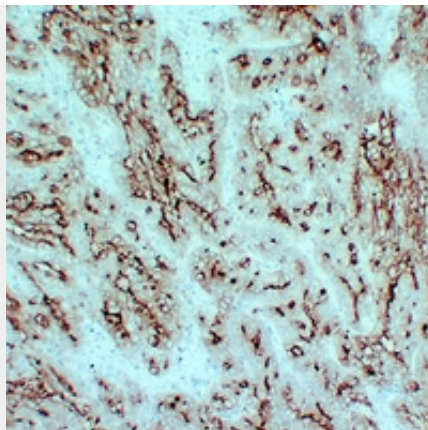
Provided below are standard protocols that you may find useful for product applications.

- [Western Blot](#)
- [Blocking Peptides](#)
- [Dot Blot](#)
- [Immunohistochemistry](#)
- [Immunofluorescence](#)
- [Immunoprecipitation](#)
- [Flow Cytometry](#)
- [Cell Culture](#)

Anti-CD66e Antibody - Images



Immunohistochemical analysis of CD66e staining in human tonsil formalin fixed paraffin embedded tissue section. The section was pre-treated using heat mediated antigen retrieval with sodium citrate buffer (pH 6.0). The section was then incubated with the antibody at room temperature and detected using an HRP conjugated compact polymer system. DAB was used as the chromogen. The section was then counterstained with haematoxylin and mounted with DPX.



Immunohistochemical analysis of CD66e staining in human colon carcinoma formalin fixed paraffin embedded tissue section. The section was pre-treated using heat mediated antigen retrieval with sodium citrate buffer (pH 6.0). The section was then incubated with the antibody at room temperature and detected using an HRP conjugated compact polymer system. DAB was used as the chromogen. The section was then counterstained with haematoxylin and mounted with DPX.

Anti-CD66e Antibody - Background

KLH-conjugated synthetic peptide encompassing a sequence within human CD66e. The exact sequence is proprietary.