

**Anti-CD21 Antibody**  
Mouse monoclonal antibody to CD21  
Catalog # AP61605**Specification**

---

**Anti-CD21 Antibody - Product Information**

Application	IF, IP
Primary Accession	<a href="#">P20023</a>
Reactivity	Human
Host	Mouse
Clonality	Monoclonal
Calculated MW	112916

**Anti-CD21 Antibody - Additional Information****Gene ID** 1380**Other Names**

C3DR; Complement receptor type 2; Cr2; Complement C3d receptor; Epstein-Barr virus receptor; EBV receptor; CD21

**Target/Specificity**

Recognizes endogenous levels of CD21 protein.

**Dilution**

IF~~IH (1/100 - 1/300)

IP~~IH (1/100 - 1/300)

**Format**

Mouse IgG1. Liquid in PBS containing 50% glycerol, 0.2% BSA and 0.09% (W/V) sodium azide.

**Storage**

Store at -20 °C. Stable for 12 months from date of receipt

**Anti-CD21 Antibody - Protein Information****Name** CR2**Synonyms** C3DR**Function**

Receptor for complement C3, for the Epstein-Barr virus on human B-cells and T-cells and for HNRNPU (PubMed:&lt;a href="http://www.uniprot.org/citations/7753047" target="\_blank"&gt;7753047&lt;/a&gt;). Participates in B lymphocytes activation (PubMed:&lt;a href="http://www.uniprot.org/citations/7753047" target="\_blank"&gt;7753047&lt;/a&gt;).

**Cellular Location**

Cell membrane; Single-pass type I membrane protein

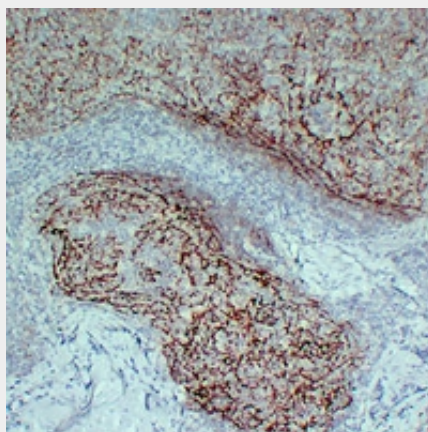
**Tissue Location**

Mature B-lymphocytes, T-lymphocytes, pharyngeal epithelial cells, astrocytes and follicular dendritic cells of the spleen

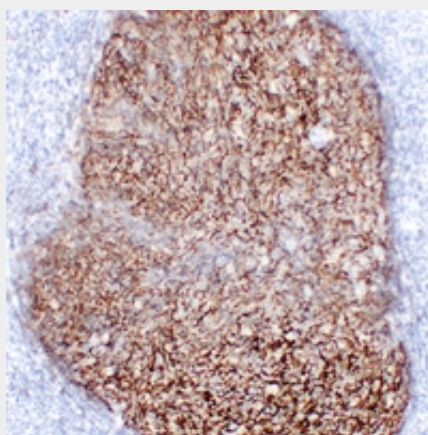
**Anti-CD21 Antibody - Protocols**

Provided below are standard protocols that you may find useful for product applications.

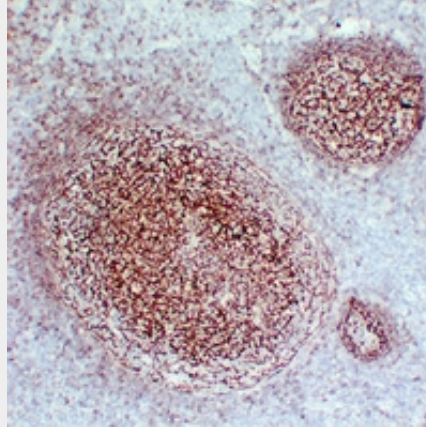
- [Western Blot](#)
- [Blocking Peptides](#)
- [Dot Blot](#)
- [Immunohistochemistry](#)
- [Immunofluorescence](#)
- [Immunoprecipitation](#)
- [Flow Cytometry](#)
- [Cell Culture](#)

**Anti-CD21 Antibody - Images**

Immunohistochemical analysis of CD21 staining in human follicular lymphoma formalin fixed paraffin embedded tissue section. The section was pre-treated using heat mediated antigen retrieval with sodium citrate buffer (pH 6.0). The section was then incubated with the antibody at room temperature and detected using an HRP conjugated compact polymer system. DAB was used as the chromogen. The section was then counterstained with haematoxylin and mounted with DPX.



Immunohistochemical analysis of CD21 staining in human lymphoma formalin fixed paraffin embedded tissue section. The section was pre-treated using heat mediated antigen retrieval with sodium citrate buffer (pH 6.0). The section was then incubated with the antibody at room temperature and detected using an HRP conjugated compact polymer system. DAB was used as the chromogen. The section was then counterstained with haematoxylin and mounted with DPX.



Immunohistochemical analysis of CD21 staining in human tonsil formalin fixed paraffin embedded tissue section. The section was pre-treated using heat mediated antigen retrieval with sodium citrate buffer (pH 6.0). The section was then incubated with the antibody at room temperature and detected using an HRP conjugated compact polymer system. DAB was used as the chromogen. The section was then counterstained with haematoxylin and mounted with DPX.

#### **Anti-CD21 Antibody - Background**

KLH-conjugated synthetic peptide encompassing a sequence within human CD21. The exact sequence is proprietary.