

**Anti-Beta-actin Antibody-HRP labeled**  
**Rabbit polyclonal antibody to Beta-actin-HRP labeled**  
**Catalog # AP61571**

### Specification

---

#### Anti-Beta-actin Antibody-HRP labeled - Product Information

Application	WB
Primary Accession	<a href="#">P60709</a>
Other Accession	<a href="#">P60710</a>
Reactivity	Human, Mouse, Rat, Rabbit, Monkey, Chicken, Dog
Host	Rabbit
Clonality	Polyclonal
Calculated MW	41737

#### Anti-Beta-actin Antibody-HRP labeled - Additional Information

**Gene ID** 60

#### Other Names

Actin cytoplasmic 1; Beta-actin

#### Target/Specificity

Recognizes endogenous levels of Beta-actin protein.

#### Dilution

WB~~WB (1/2000 - 1/5000)

#### Format

Liquid in 0.42% Potassium phosphate, 0.87% Sodium chloride, pH 7.3, 30% glycerol, and 0.09% (W/V) sodium azide.

#### Storage

Store at -20 °C. Stable for 12 months from date of receipt

#### Anti-Beta-actin Antibody-HRP labeled - Protein Information

**Name** ACTB

#### Function

Actin is a highly conserved protein that polymerizes to produce filaments that form cross-linked networks in the cytoplasm of cells (PubMed: [25255767](http://www.uniprot.org/citations/25255767), PubMed: [29581253](http://www.uniprot.org/citations/29581253)). Actin exists in both monomeric (G-actin) and polymeric (F-actin) forms, both forms playing key functions, such as cell motility and contraction (PubMed: [29581253](http://www.uniprot.org/citations/29581253)). In addition to their role in the cytoplasmic cytoskeleton, G- and F- actin also localize in the nucleus, and regulate gene transcription and motility and repair of damaged DNA (PubMed:

<http://www.uniprot.org/citations/29925947>). Part of the ACTR1A/ACTB filament around which the dynactin complex is built. The dynactin multiprotein complex activates the molecular motor dynein for ultra-processive transport along microtubules (By similarity).

#### Cellular Location

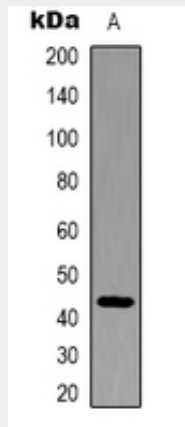
Cytoplasm, cytoskeleton. Nucleus Note=Localized in cytoplasmic mRNP granules containing untranslated mRNAs.

#### Anti-Beta-actin Antibody-HRP labeled - Protocols

Provided below are standard protocols that you may find useful for product applications.

- [Western Blot](#)
- [Blocking Peptides](#)
- [Dot Blot](#)
- [Immunohistochemistry](#)
- [Immunofluorescence](#)
- [Immunoprecipitation](#)
- [Flow Cytometry](#)
- [Cell Culture](#)

#### Anti-Beta-actin Antibody-HRP labeled - Images



Western blot analysis of Beta-actin-HRP labeled expression in HeLa (A) whole cell lysates.

#### Anti-Beta-actin Antibody-HRP labeled - Background

KLH-conjugated synthetic peptide encompassing a sequence of human Beta-actin-HRP labeled. The exact sequence is proprietary.