

Anti-Beta3-tubulin Antibody
Mouse monoclonal antibody to Beta3-tubulin
Catalog # AP61570

Specification

Anti-Beta3-tubulin Antibody - Product Information

Application	WB
Primary Accession	O13509
Other Accession	O9ERD7
Reactivity	Human, Mouse, Rat
Host	Mouse
Clonality	Monoclonal
Calculated MW	50433

Anti-Beta3-tubulin Antibody - Additional Information

Gene ID 10381

Other Names

TUBB4; Tubulin beta-3 chain; Tubulin beta-4 chain; Tubulin beta-III

Target/Specificity

Recognizes endogenous levels of Beta3-tubulin protein.

Dilution

WB~~WB (1/2000 - 1/5000)

Format

Liquid in 0.42% Potassium phosphate, 0.87% Sodium chloride, pH 7.3, 30% glycerol, and 0.09% (W/V) sodium azide.

Storage

Store at -20 °C. Stable for 12 months from date of receipt

Anti-Beta3-tubulin Antibody - Protein Information

Name TUBB3

Synonyms TUBB4

Function

Tubulin is the major constituent of microtubules, a cylinder consisting of laterally associated linear protofilaments composed of alpha- and beta-tubulin heterodimers (PubMed: [34996871](http://www.uniprot.org/citations/34996871)). Microtubules grow by the addition of GTP-tubulin dimers to the microtubule end, where a stabilizing cap forms (PubMed: [34996871](http://www.uniprot.org/citations/34996871)). Below the cap, tubulin dimers are in GDP-bound state, owing to GTPase activity of alpha- tubulin (PubMed: [34996871](http://www.uniprot.org/citations/34996871)).

TUBB3 plays a critical role in proper axon guidance and maintenance (PubMed:20074521). Binding of NTN1/Netrin-1 to its receptor UNC5C might cause dissociation of UNC5C from polymerized TUBB3 in microtubules and thereby lead to increased microtubule dynamics and axon repulsion (PubMed:28483977). Plays a role in dorsal root ganglion axon projection towards the spinal cord (PubMed:28483977).

Cellular Location

Cytoplasm, cytoskeleton. Cell projection, growth cone {ECO:0000250|UniProtKB:Q9ERD7}. Cell projection, lamellipodium {ECO:0000250|UniProtKB:Q9ERD7}. Cell projection, filopodium {ECO:0000250|UniProtKB:Q9ERD7}

Tissue Location

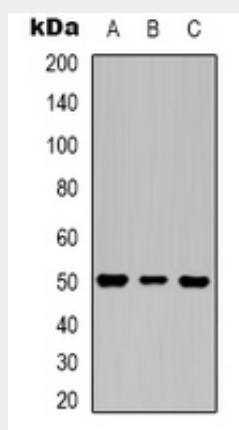
Expression is primarily restricted to central and peripheral nervous system. Greatly increased expression in most cancerous tissues.

Anti-Beta3-tubulin Antibody - Protocols

Provided below are standard protocols that you may find useful for product applications.

- [Western Blot](#)
- [Blocking Peptides](#)
- [Dot Blot](#)
- [Immunohistochemistry](#)
- [Immunofluorescence](#)
- [Immunoprecipitation](#)
- [Flow Cytometry](#)
- [Cell Culture](#)

Anti-Beta3-tubulin Antibody - Images



Western blot analysis of Beta3-tubulin expression in HeLa (A), mouse brain (B), rat brain (C) whole cell lysates.

Anti-Beta3-tubulin Antibody - Background

KLH-conjugated synthetic peptide encompassing a sequence of human Beta3-tubulin. The exact sequence is proprietary.