

**Anti-Beta2A-tubulin Antibody**  
Mouse monoclonal antibody to Beta2A-tubulin  
Catalog # AP61569

**Specification**

---

**Anti-Beta2A-tubulin Antibody - Product Information**

Application	WB, IP
Primary Accession	<a href="#">Q13885</a>
Other Accession	<a href="#">Q7TMM9</a>
Reactivity	Human, Mouse, Rat
Host	Mouse
Clonality	Monoclonal
Calculated MW	49907

**Anti-Beta2A-tubulin Antibody - Additional Information**

**Gene ID** 7280

**Other Names**

TUBB2; Tubulin beta-2A chain; Tubulin beta class IIa

**Target/Specificity**

Recognizes endogenous levels of Beta2A-tubulin protein.

**Dilution**

WB~~WB (1/50000 - 1/100000), IP (1/100 - 1/200)

IP~~WB (1/50000 - 1/100000), IP (1/100 - 1/200)

**Format**

Liquid in 0.42% Potassium phosphate, 0.87% Sodium chloride, pH 7.3, 30% glycerol, and 0.09% (W/V) sodium azide.

**Storage**

Store at -20 °C. Stable for 12 months from date of receipt

**Anti-Beta2A-tubulin Antibody - Protein Information**

**Name** TUBB2A

**Synonyms** TUBB2

**Function**

Tubulin is the major constituent of microtubules, a cylinder consisting of laterally associated linear protofilaments composed of alpha- and beta-tubulin heterodimers. Microtubules grow by the addition of GTP-tubulin dimers to the microtubule end, where a stabilizing cap forms. Below the cap, tubulin dimers are in GDP-bound state, owing to GTPase activity of alpha-tubulin.

**Cellular Location**

Cytoplasm, cytoskeleton.

#### Tissue Location

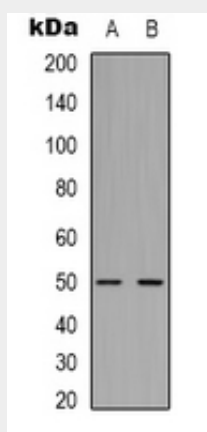
High expression in brain, where it represents 30% of all beta-tubulins.

#### Anti-Beta2A-tubulin Antibody - Protocols

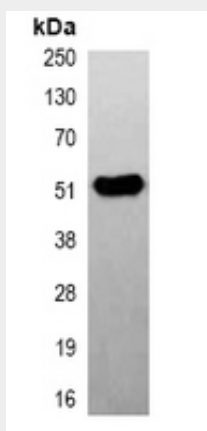
Provided below are standard protocols that you may find useful for product applications.

- [Western Blot](#)
- [Blocking Peptides](#)
- [Dot Blot](#)
- [Immunohistochemistry](#)
- [Immunofluorescence](#)
- [Immunoprecipitation](#)
- [Flow Cytometry](#)
- [Cell Culture](#)

#### Anti-Beta2A-tubulin Antibody - Images



Western blot analysis of Beta2A-tubulin expression in mouse brain (A), rat brain (B) whole cell lysates.



Immunoprecipitation of Beta2A-tubulin from 0.5mg mouse brain whole cell extract lysate, using Anti-Beta2A-tubulin Antibody.

#### Anti-Beta2A-tubulin Antibody - Background

KLH-conjugated synthetic peptide encompassing a sequence of human Beta2A-tubulin. The exact sequence is proprietary.