

Anti-Alpha-lactalbumin Antibody
Mouse monoclonal antibody to Alpha-lactalbumin
Catalog # AP61567

Specification

Anti-Alpha-lactalbumin Antibody - Product Information

Application	WB
Primary Accession	P00709
Reactivity	Human
Host	Mouse
Clonality	Monoclonal
Calculated MW	16225

Anti-Alpha-lactalbumin Antibody - Additional Information

Gene ID 3906

Other Names

LYZL7; Alpha-lactalbumin; Lactose synthase B protein; Lysozyme-like protein 7

Target/Specificity

Recognizes endogenous levels of Alpha-lactalbumin protein.

Dilution

WB~~WB (1/1000 - 1/2000)

Format

Liquid in 0.42% Potassium phosphate, 0.87% Sodium chloride, pH 7.3, 30% glycerol, and 0.09% (W/V) sodium azide.

Storage

Store at -20 °C. Stable for 12 months from date of receipt

Anti-Alpha-lactalbumin Antibody - Protein Information

Name LALBA

Synonyms LYZL7

Function

Regulatory subunit of lactose synthase, changes the substrate specificity of galactosyltransferase in the mammary gland making glucose a good acceptor substrate for this enzyme. This enables LS to synthesize lactose, the major carbohydrate component of milk. In other tissues, galactosyltransferase transfers galactose onto the N- acetylglucosamine of the oligosaccharide chains in glycoproteins.

Cellular Location

Secreted.

Tissue Location

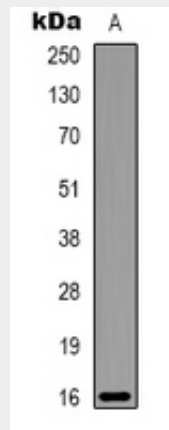
Mammary gland specific. Secreted in milk.

Anti-Alpha-lactalbumin Antibody - Protocols

Provided below are standard protocols that you may find useful for product applications.

- [Western Blot](#)
- [Blocking Peptides](#)
- [Dot Blot](#)
- [Immunohistochemistry](#)
- [Immunofluorescence](#)
- [Immunoprecipitation](#)
- [Flow Cytometry](#)
- [Cell Culture](#)

Anti-Alpha-lactalbumin Antibody - Images



Western blot analysis of Alpha-lactalbumin expression in Milk (A) whole cell lysates.

Anti-Alpha-lactalbumin Antibody - Background

KLH-conjugated synthetic peptide encompassing a sequence of human Alpha-lactalbumin. The exact sequence is proprietary.