

Anti-Alpha-actin-1 Antibody
Mouse monoclonal antibody to Alpha-actin-1
Catalog # AP61565**Specification**

Anti-Alpha-actin-1 Antibody - Product Information

Application	WB, IH, IP
Primary Accession	P68133
Other Accession	P68134
Reactivity	Human, Mouse, Rat
Host	Mouse
Clonality	Monoclonal
Calculated MW	42051

Anti-Alpha-actin-1 Antibody - Additional Information**Gene ID 58****Other Names**

ACTA; Actin alpha skeletal muscle; Alpha-actin-1

Target/Specificity

Recognizes endogenous levels of Alpha-actin-1 protein.

Dilution

WB~~WB (1/5000 - 1/10000), IH (1/200 - 1/500), IP (1/100 - 1/200)

IH~~WB (1/5000 - 1/10000), IH (1/200 - 1/500), IP (1/100 - 1/200)

IP~~WB (1/5000 - 1/10000), IH (1/200 - 1/500), IP (1/100 - 1/200)

Format

Liquid in 0.42% Potassium phosphate, 0.87% Sodium chloride, pH 7.3, 30% glycerol, and 0.09% (W/V) sodium azide.

Storage

Store at -20 °C. Stable for 12 months from date of receipt

Anti-Alpha-actin-1 Antibody - Protein Information**Name** ACTA1**Synonyms** ACTA**Function**

Actins are highly conserved proteins that are involved in various types of cell motility and are ubiquitously expressed in all eukaryotic cells.

Cellular Location

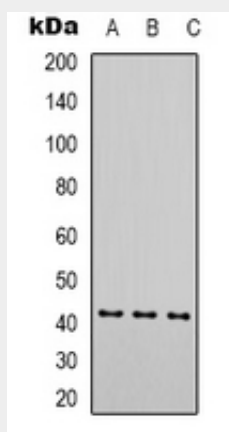
Cytoplasm, cytoskeleton.

Anti-Alpha-actin-1 Antibody - Protocols

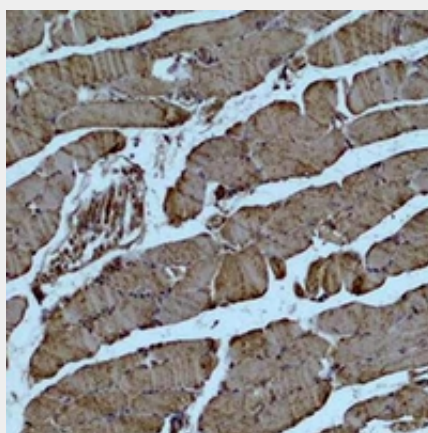
Provided below are standard protocols that you may find useful for product applications.

- [Western Blot](#)
- [Blocking Peptides](#)
- [Dot Blot](#)
- [Immunohistochemistry](#)
- [Immunofluorescence](#)
- [Immunoprecipitation](#)
- [Flow Cytometry](#)
- [Cell Culture](#)

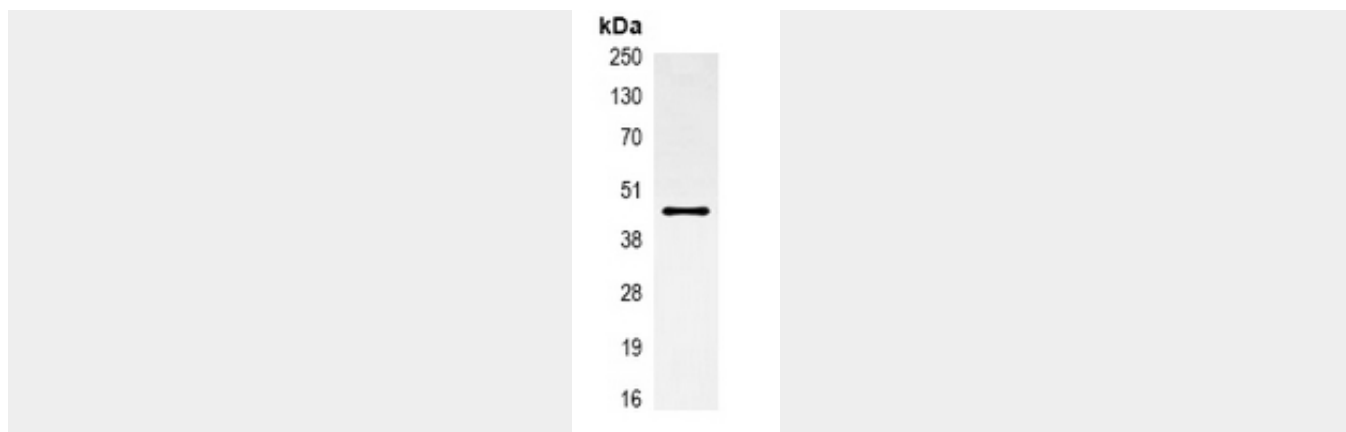
Anti-Alpha-actin-1 Antibody - Images



Western blot analysis of Alpha-actin-1 expression in Hela (A), mouse brain (B), rat brain (C) whole cell lysates.



Immunohistochemical analysis of Alpha-actin-1 staining in mouse skeletal muscle formalin fixed paraffin embedded tissue section. The section was pre-treated using heat mediated antigen retrieval with sodium citrate buffer (pH 6.0). The section was then incubated with the antibody at room temperature and detected using an HRP conjugated compact polymer system. DAB was used as the chromogen. The section was then counterstained with haematoxylin and mounted with DPX.



Immunoprecipitation of Alpha-actin-1 from 0.5mg mouse brain whole cell extract lysate, using Anti-Alpha-actin-1 Antibody.

Anti-Alpha-actin-1 Antibody - Background

KLH-conjugated synthetic peptide encompassing a sequence of human Alpha-actin-1. The exact sequence is proprietary.