

**Anti-Collagen 17 alpha 1 Antibody**  
**Rabbit polyclonal antibody to Collagen 17 alpha 1**  
**Catalog # AP61544**

**Specification**

---

**Anti-Collagen 17 alpha 1 Antibody - Product Information**

Application	<b>WB</b>
Primary Accession	<a href="#">Q9UMD9</a>
Other Accession	<a href="#">Q07563</a>
Reactivity	<b>Human, Mouse, Rat</b>
Host	<b>Rabbit</b>
Clonality	<b>Polyclonal</b>
Calculated MW	<b>150419</b>

**Anti-Collagen 17 alpha 1 Antibody - Additional Information**

**Gene ID** 1308

**Other Names**

BP180; BPAG2; Collagen alpha-1(XVII) chain; 180 kDa bullous pemphigoid antigen 2; Bullous pemphigoid antigen 2

**Target/Specificity**

Recognizes endogenous levels of Collagen 17 alpha 1 protein.

**Dilution**

WB~~WB (1/500 - 1/2000), IH (1/50 - 1/200)

**Format**

Liquid in 0.42% Potassium phosphate, 0.87% Sodium chloride, pH 7.3, 30% glycerol, and 0.09% (W/V) sodium azide.

**Storage**

Store at -20 °C. Stable for 12 months from date of receipt

**Anti-Collagen 17 alpha 1 Antibody - Protein Information**

**Name** COL17A1

**Synonyms** BP180, BPAG2

**Function**

May play a role in the integrity of hemidesmosome and the attachment of basal keratinocytes to the underlying basement membrane.

**Cellular Location**

Cell junction, hemidesmosome. Membrane; Single-pass type II membrane protein. Note=Localized along the plasma membrane of the hemidesmosome [97 kDa linear IgA disease antigen]:

Secreted, extracellular space, extracellular matrix, basement membrane Note=Localized in the lamina lucida beneath the hemidesmosomes

#### Tissue Location

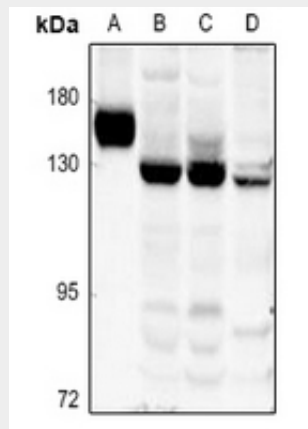
Detected in skin (PubMed:8618013). In the cornea, it is detected in the epithelial basement membrane, the epithelial cells, and at a lower level in stromal cells (at protein level) (PubMed:25676728). Stratified squamous epithelia. Found in hemidesmosomes. Expressed in cornea, oral mucosa, esophagus, intestine, kidney collecting ducts, ureter, bladder, urethra and thymus but is absent in lung, blood vessels, skeletal muscle and nerves

#### Anti-Collagen 17 alpha 1 Antibody - Protocols

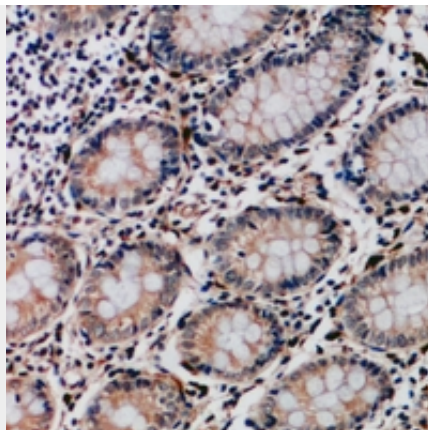
Provided below are standard protocols that you may find useful for product applications.

- [Western Blot](#)
- [Blocking Peptides](#)
- [Dot Blot](#)
- [Immunohistochemistry](#)
- [Immunofluorescence](#)
- [Immunoprecipitation](#)
- [Flow Cytometry](#)
- [Cell Culture](#)

#### Anti-Collagen 17 alpha 1 Antibody - Images



Western blot analysis of Collagen 17 alpha 1 expression in rat kidney (A), HCT116 (B), HepG2 (C), 3T3L1 (D) whole cell lysates.



Immunohistochemical analysis of Collagen 17 alpha 1 staining in human colon cancer formalin fixed paraffin embedded tissue section. The section was pre-treated using heat mediated antigen retrieval with sodium citrate buffer (pH 6.0). The section was then incubated with the antibody at room temperature and detected using an HRP conjugated compact polymer system. DAB was used as the chromogen. The section was then counterstained with haematoxylin and mounted with DPX.

#### **Anti-Collagen 17 alpha 1 Antibody - Background**

KLH-conjugated synthetic peptide encompassing a sequence within the center region of human Collagen 17 alpha 1. The exact sequence is proprietary.