

**Anti-CALB1 Antibody**  
**Rabbit polyclonal antibody to CALB1**  
**Catalog # AP61526****Specification**

---

**Anti-CALB1 Antibody - Product Information**

Application	<b>WB</b>
Primary Accession	<a href="#">P05937</a>
Reactivity	<b>Human, Rat, Pig, Bovine</b>
Host	<b>Rabbit</b>
Clonality	<b>Polyclonal</b>
Calculated MW	<b>30025</b>

**Anti-CALB1 Antibody - Additional Information****Gene ID** 793**Other Names**

CAB27; Calbindin; Calbindin D28; D-28K; Vitamin D-dependent calcium-binding protein, avian-type

**Target/Specificity**

Recognizes endogenous levels of CALB1 protein.

**Dilution**

WB~~WB (1/500 - 1/1000)

**Format**

Liquid in 0.42% Potassium phosphate, 0.87% Sodium chloride, pH 7.3, 30% glycerol, and 0.09% (W/V) sodium azide.

**Storage**

Store at -20 °C. Stable for 12 months from date of receipt

**Anti-CALB1 Antibody - Protein Information****Name** CALB1**Synonyms** CAB27**Function**

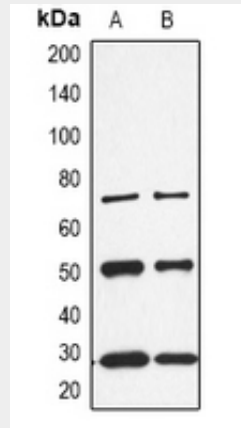
Buffers cytosolic calcium. May stimulate a membrane Ca(2+)- ATPase and a 3',5'-cyclic nucleotide phosphodiesterase.

**Anti-CALB1 Antibody - Protocols**

Provided below are standard protocols that you may find useful for product applications.

- [Western Blot](#)
- [Blocking Peptides](#)
- [Dot Blot](#)
- [Immunohistochemistry](#)
- [Immunofluorescence](#)
- [Immunoprecipitation](#)
- [Flow Cytometry](#)
- [Cell Culture](#)

#### Anti-CALB1 Antibody - Images



Western blot analysis of CALB1 expression in K562 (A), rat kidney (B) whole cell lysates.

#### Anti-CALB1 Antibody - Background

KLH-conjugated synthetic peptide encompassing a sequence within the C-term region of human CALB1. The exact sequence is proprietary.