

Anti-mPR alpha Antibody
Rabbit polyclonal antibody to mPR alpha
Catalog # AP61509

Specification

Anti-mPR alpha Antibody - Product Information

Application	WB, IF
Primary Accession	O86WK9
Other Accession	O80ZE4
Reactivity	Human, Mouse, Rat
Host	Rabbit
Clonality	Polyclonal
Calculated MW	39719

Anti-mPR alpha Antibody - Additional Information

Gene ID 164091

Other Names

MRPA; Membrane progesterin receptor alpha; mPR alpha; Progesterin and adipoQ receptor family member 7; Progesterin and adipoQ receptor family member VII

Target/Specificity

Recognizes endogenous levels of mPR alpha protein.

Dilution

WB~~WB (1/500 - 1/1000), IH (1/100 - 1/200), IF/IC (1/100 - 1/500)
IF~~WB (1/500 - 1/1000), IH (1/100 - 1/200), IF/IC (1/100 - 1/500)

Format

Liquid in 0.42% Potassium phosphate, 0.87% Sodium chloride, pH 7.3, 30% glycerol, and 0.09% (W/V) sodium azide.

Storage

Store at -20 °C. Stable for 12 months from date of receipt

Anti-mPR alpha Antibody - Protein Information

Name PAQR7 ([HGNC:23146](#))

Synonyms MRPA

Function

Plasma membrane progesterone (P4) receptor coupled to G proteins (PubMed: [23763432](http://www.uniprot.org/citations/23763432)). Seems to act through a G(i) mediated pathway (PubMed: [23763432](http://www.uniprot.org/citations/23763432)). May be involved in oocyte maturation (PubMed: [12601167](http://www.uniprot.org/citations/12601167)). Involved in

neurosteroid inhibition of apoptosis (PubMed:23161870). Also binds dehydroepiandrosterone (DHEA), pregnanolone, pregnenolone and allopregnanolone (PubMed:23161870).

Cellular Location

Cell membrane; Multi-pass membrane protein

Tissue Location

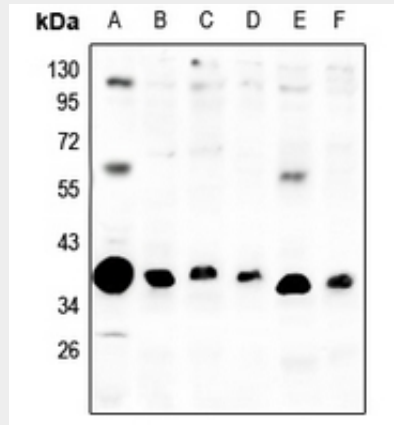
Expressed in a wide range of tissues including ovary, testis, placenta, uterus and bladder

Anti-mPR alpha Antibody - Protocols

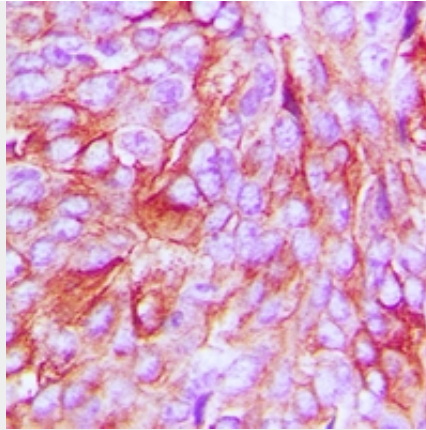
Provided below are standard protocols that you may find useful for product applications.

- [Western Blot](#)
- [Blocking Peptides](#)
- [Dot Blot](#)
- [Immunohistochemistry](#)
- [Immunofluorescence](#)
- [Immunoprecipitation](#)
- [Flow Cytometry](#)
- [Cell Culture](#)

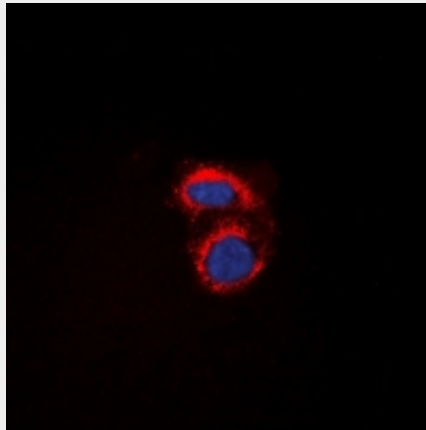
Anti-mPR alpha Antibody - Images



Western blot analysis of mPR alpha expression in Hela (A), SGC7901 (B), HCT116 (C), U87MG (D), C6 (E), CT26 (F) whole cell lysates.



Immunohistochemical analysis of mPR alpha staining in human breast cancer formalin fixed paraffin embedded tissue section. The section was pre-treated using heat mediated antigen retrieval with sodium citrate buffer (pH 6.0). The section was then incubated with the antibody at room temperature and detected using an HRP conjugated compact polymer system. DAB was used as the chromogen. The section was then counterstained with haematoxylin and mounted with DPX.



Immunofluorescent analysis of mPR alpha staining in A549 cells. Formalin-fixed cells were permeabilized with 0.1% Triton X-100 in TBS for 5-10 minutes and blocked with 3% BSA-PBS for 30 minutes at room temperature. Cells were probed with the primary antibody in 3% BSA-PBS and incubated overnight at 4 °C in a humidified chamber. Cells were washed with PBST and incubated with a DyLight 594-conjugated secondary antibody (red) in PBS at room temperature in the dark. DAPI was used to stain the cell nuclei (blue).

Anti-mPR alpha Antibody - Background

KLH-conjugated synthetic peptide encompassing a sequence within the C-term region of human mPR alpha. The exact sequence is proprietary.