

Anti-Histone H2B (Butyryl-K12) Antibody
Rabbit polyclonal antibody to Histone H2B (Butyryl-K12)
Catalog # AP61495

Specification

Anti-Histone H2B (Butyryl-K12) Antibody - Product Information

Application	WB, E
Primary Accession	P33778 , P62807
Other Accession	P70696 , Q64475 , Q6ZWY9
Reactivity	Human, Mouse, Rat, Zebrafish, Chicken, Bovine
Host	Rabbit
Clonality	Polyclonal

Anti-Histone H2B (Butyryl-K12) Antibody - Additional Information

Other Names

HIST1H2BA; TSH2B; Histone H2B type 1-A; Histone H2B testis; Testis-specific histone H2B; HIST1H2BB; H2BFF; Histone H2B type 1-B; Histone H2B.1; Histone H2B.f; H2B/f; HIST1H2BC; H2BFL; HIST1H2BE; H2BFH; HIST1H2BF; H2BFG; HIST1H2BG; H2BFA; HIST1H2BI; H2BfK; Histone H2B type 1-C/E/F/G/I; Histone H2B.1 A; Histone H2B.a; H2B/a; Histone H2B.g; H2B/g; Histone H2B.h; H2B/h; Histone H2B.k; H2B/k; Histone H2B.l; H2B/l

Target/Specificity

Recognizes endogenous levels of Histone H2B with a site at Butyryl-K12 protein.

Dilution

WB~~WB (1/500 - 1/1000)

E~~WB (1/500 - 1/1000)

Format

Liquid in 0.42% Potassium phosphate, 0.87% Sodium chloride, pH 7.3, 30% glycerol, and 0.09% (W/V) sodium azide.

Storage

Store at -20 °C. Stable for 12 months from date of receipt

Anti-Histone H2B (Butyryl-K12) Antibody - Protein Information

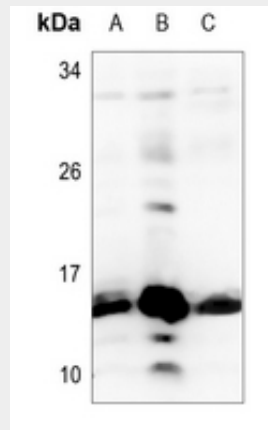
Anti-Histone H2B (Butyryl-K12) Antibody - Protocols

Provided below are standard protocols that you may find useful for product applications.

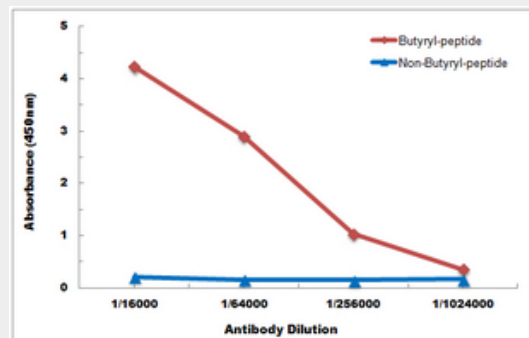
- [Western Blot](#)
- [Blocking Peptides](#)
- [Dot Blot](#)

- [Immunohistochemistry](#)
- [Immunofluorescence](#)
- [Immunoprecipitation](#)
- [Flow Cytometry](#)
- [Cell Culture](#)

Anti-Histone H2B (Butyryl-K12) Antibody - Images



Western blot analysis of Histone H2B (Butyryl-K12) expression in HEK293T (A), A549 (B), H1688 (C) whole cell lysates.



Direct ELISA antibody dose-response curve using Anti-Histone H2B (Butyryl-K12) Antibody. Antigen (butyryl-peptide and non-butyryl-peptide) concentration is 5 ug/ml. Goat Anti-Rabbit IgG (H&L) - HRP was used as the secondary antibody, and signal was developed by TMB substrate.

Anti-Histone H2B (Butyryl-K12) Antibody - Background

KLH-conjugated synthetic peptide encompassing a sequence within the N-term region of human Histone H2B with a site at Butyryl-K12. The exact sequence is proprietary.